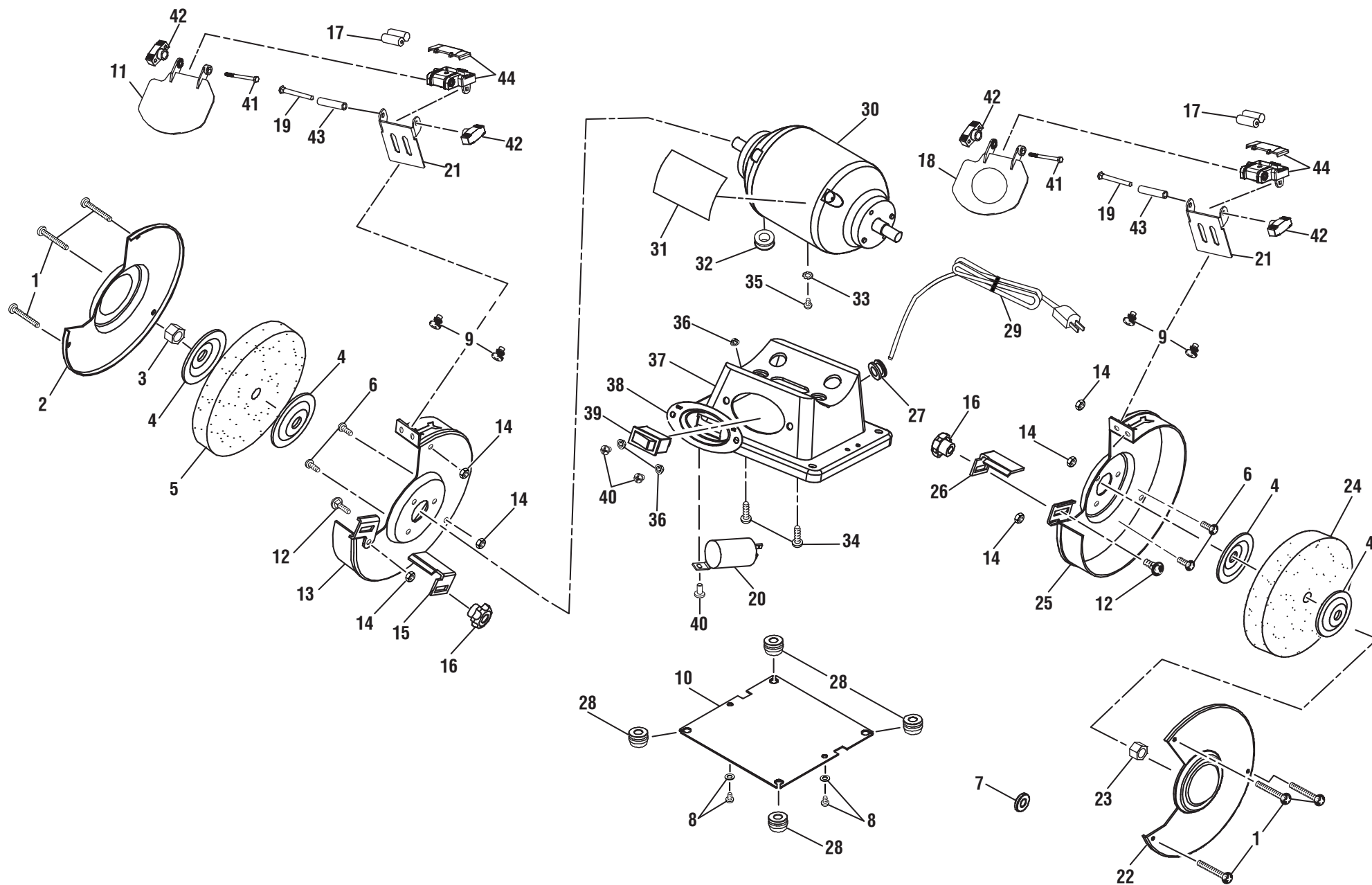


HART
Bench Grinder
Model No. HTBG01
Repair Sheet

Hart Consumer Products, Inc.
P.O. Box 1348, Anderson, SC 29622
Phone 1-800-776-5191
www.HARTtools.com

HART BENCH GRINDER – MODEL NO. HTBG01



HART BENCH GRINDER – MODEL NO. HTBG01

The model number will be found on a label attached to the motor housing. Always mention the model number in all correspondence regarding your **BENCH GRINDER** or when ordering repair parts.

PARTS LIST

| KEY NO. | PART NUMBER | DESCRIPTION | QTY | KEY NO. | PART NUMBER | DESCRIPTION | QTY |
|---------|--------------|---|-----|---------|-------------------|--|-----|
| 1 | 089150114014 | Screw (M5 x 42 mm, Pan Hd.)..... | 6 | 25 | 089240057008 | Wheel Guard (Right)..... | 1 |
| 2 | 089240057005 | Left Wheel Cover | 1 | 26 | 089055007005 | Work Rest (Right)..... | 1 |
| 3 | 089150100051 | Hex Nut (Left Hand M12)..... | 1 | 27 | 089150100048 | Grommet..... | 1 |
| 4 | 089150100042 | Wheel Flange | 4 | 28 | 089055007029 | Rubber Foot..... | 4 |
| 5 | 089150100043 | Wheel (#36, 150 x 20 x 12.7 mm)..... | 1 | 29 | 089150100049 | Power Cord..... | 1 |
| 6 | 089055009019 | Screw (M5 x 10 mm, Pan Hd.)..... | 4 | 30 | 089240057701 | Motor Assembly..... | 1 |
| 7 | 089055007042 | Spacer (Use With Optional Wire Wheel Only)... | 1 | 31 | 089240057903 | Data Label | 1 |
| | ** | Optional Wire Wheel | | 32 | 089150100052 | Strain Relief | 1 |
| 8 | 089055007007 | Screw and Washer (M5 x 8 mm, Pan Hd.)..... | 2 | 33 | 089150100033 | Lock Washer (D4) | 1 |
| 9 | 089150114001 | Screw (M5 x 8 mm, Pan Hd.)..... | 4 | 34 | 089055007028 | Screw (M6 x 10 mm, Pan Hd.)..... | 2 |
| 10 | 089150114016 | Bottom Cover Base | 1 | 35 | 089150114019 | Screw w/Washer (M4 x 7 mm, Pan Hd.)..... | 1 |
| 11 | 089150114005 | Eye Shield..... | 1 | 36 | 089150112003 | Flange Hex Nut (M4)..... | 3 |
| 12 | 089150114012 | Carriage Bolt (M6 x 14 mm)..... | 2 | 37 | 089150114015 | Base..... | 1 |
| 13 | 089240057004 | Wheel Guard (Left)..... | 1 | 38 | 089240057006 | Switch Plate..... | 1 |
| 14 | 089150112002 | Flange Hex Nut (M5)..... | 6 | 39 | 089150100037 | Switch..... | 1 |
| 15 | 089055007032 | Work Rest (Left) | 1 | 40 | 089150100017 | Screw (M4 x 8 mm, Pan Hd.)..... | 3 |
| 16 | 089240057003 | Locking Knob | 2 | 41 | 089150114003 | Carriage Bolt (M5 x 55 mm)..... | 2 |
| 17 | 089150114010 | Batteries (AAA)..... | 4 | 42 | 089240057002 | Knob | 4 |
| 18 | 089150114009 | Magnified Eye Shield | 1 | 43 | 089150114006 | Sleeve | 2 |
| 19 | 089150114008 | Bolt (M5 x 55 mm, Hex Hd.) | 2 | 44 | 089055009702 | LED Light Assembly with Cover | 2 |
| 20 | 089150114017 | Capacitor | 1 | | | | |
| 21 | 089150114002 | Spark Deflector..... | 2 | | Not Shown: | | |
| 22 | 089240057007 | Right Wheel Cover..... | 1 | | 995000875 | Operator's Manual (089240057907) | |
| 23 | 080900061451 | Hex Nut (Right Hand M12)..... | 1 | | 4-21-20 | | |
| 24 | 089150100050 | Wheel (#60, 150 x 20 x 12.7 mm)..... | 1 | | (Rev:02) | | |

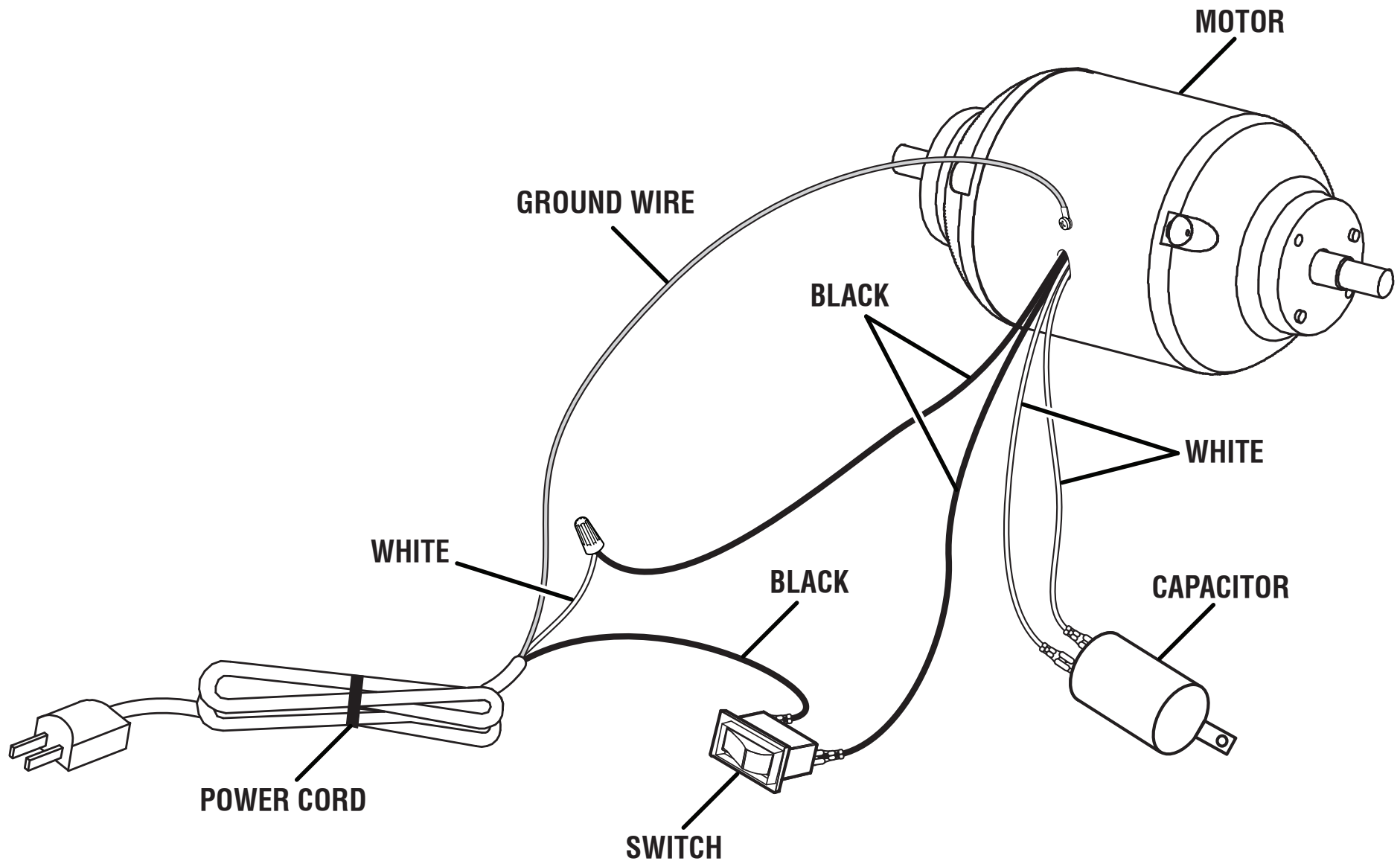


WARNING:

Improper repair of a double insulated tool can result in damage to the double insulation system possibly causing electrical shock or electrocution. Any repairs requiring disassembly of your tool requires safety testing and should only be performed by an Authorized Service Center. For the service center nearest you call 1-800-776-5191.

** Maybe be purchased at your nearest catalog order or retail store.

HART BENCH GRINDER – MODEL NO. HTBG01



WIRING DIAGRAM