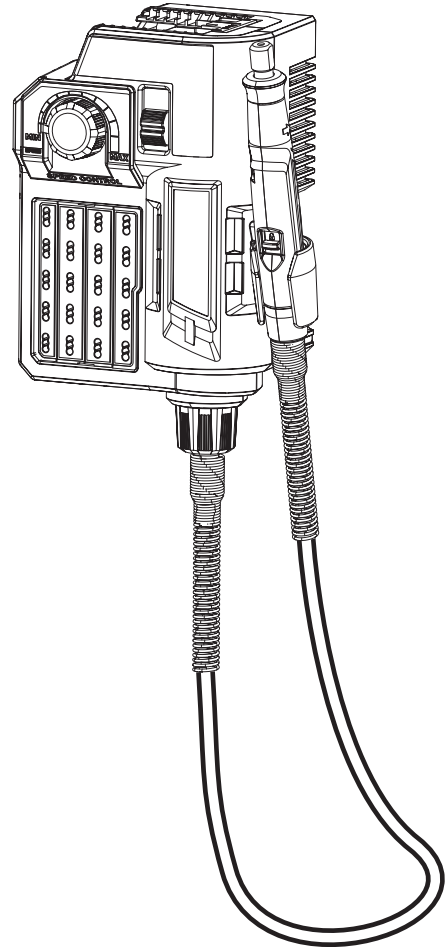


# REPAIR SHEET

BRAND  
**HART**

MODEL NO.  
**HPRL01**

DESCRIPTION  
**20 Volt Rotary Tool**



**HART CONSUMER PRODUCTS, INC.**

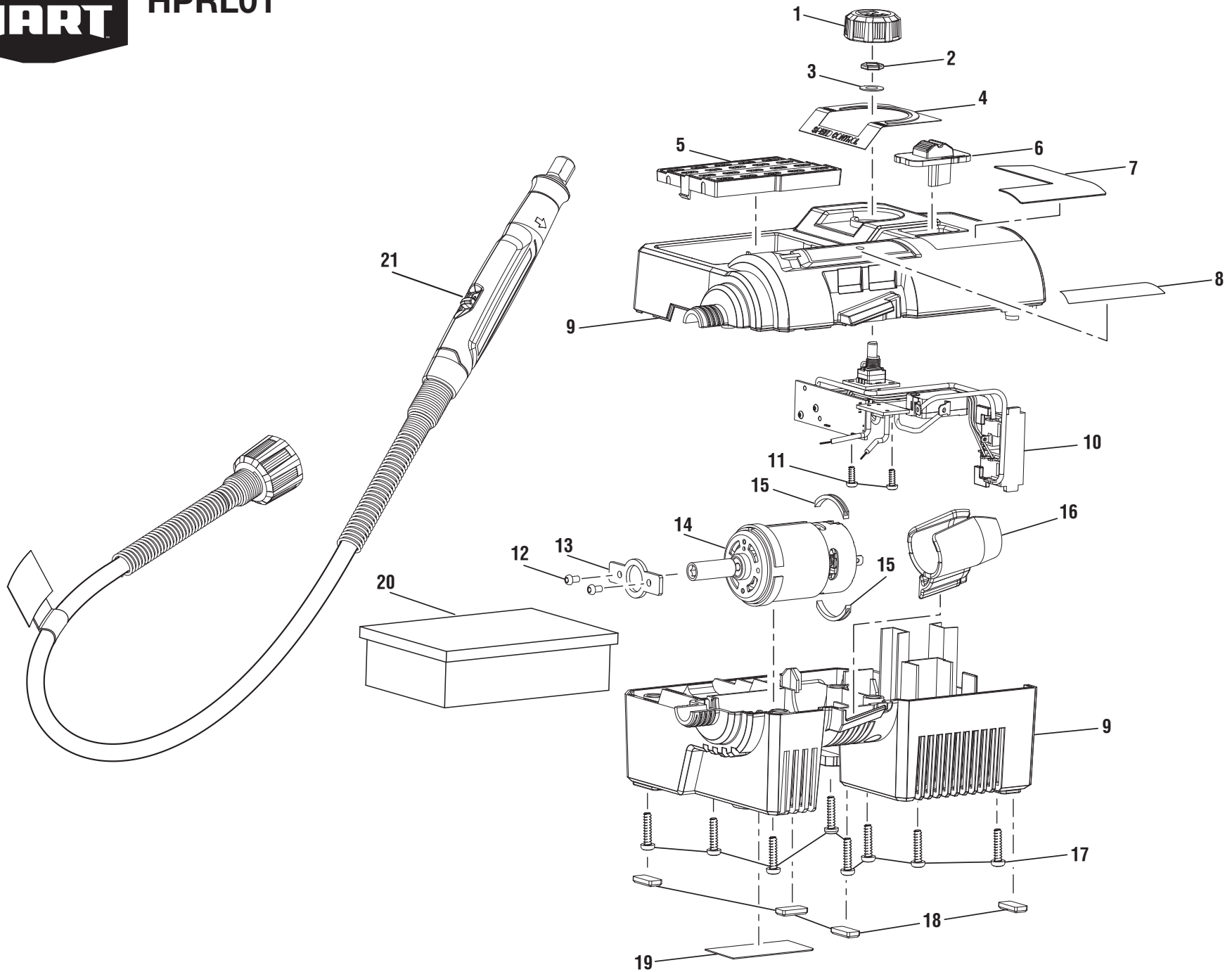
P.O. Box 1348, Anderson, SC 29622 ■ 1-800-776-5191 ■ [www.HARTtools.com](http://www.HARTtools.com)

9-27-21 (Rev:03)

*The model number and manufacturing location will be found on a label attached to the product. Always mention this information in all communications regarding this product and when ordering parts.*



HPRL01





# HPRL01

## PARTS LIST

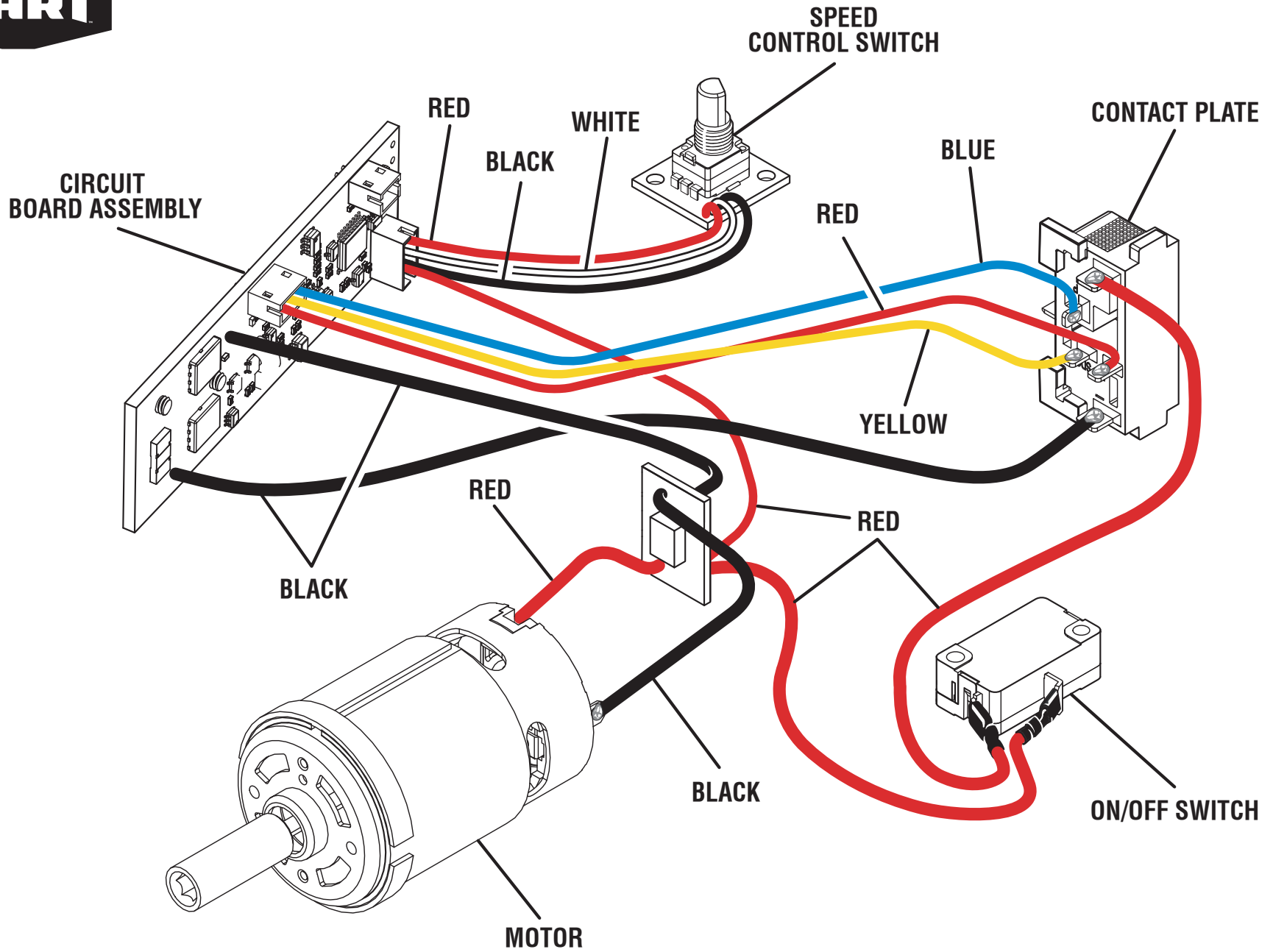
KEY NO.	PART NO.	DESCRIPTION	QTY.
1	539008001	Speed Control Dial	1
2	696813001	Hex Nut (M7)	1
3	696814001	Washer (ID7 x OD12 x 0.5t)	1
4	941001771	Speed Control Label	1
5	538545001	Accessories Holder	1
6	538544001	Switch Actuator	1
7	941120464	Warning Label	1
8	941114248	Logo Label	1
9-CN	204039002	Housing Assembly (Inc. Key Nos. 4, 7-8 and 19)	1
9-VN	204039005	Housing Assembly (Inc. Key Nos. 4, 7-8 and 19)	1
10	204039004	Circuit Board Assembly	1
11	660438002	Screw (M3 x 8 mm, T10 Torx Pan Hd.)	2
12	662308001	Screw w/Washer (M3 x 5 mm, T10 Torx Pan Hd.)	2

KEY NO.	PART NO.	DESCRIPTION	QTY.
13	635626001	Motor Mount	1
14-CN	206039006	Motor Assembly	1
14-VN	206039007	Motor Assembly	1
15	562822002	Rubber Cushion	2
16	536073002	Pen Clip	1
17	660024018	Screw (M4 x 16 mm, T20 Torx Pan Hd.)	8
18	565300001	Rubber Foot	4
19-CN	941122262	Data Label	1
19-VN	941122829	Data Label	1
20	315255001	Rotary Tool Head Accessories	1
21	204039003	Flex Shaft Assembly	1
	<b>Not Shown:</b>		
	995000865	Operator's Manual (961153048)	

If a key no. shows multiple part numbers, please order the part that corresponds with the country of origin shown on the product's data label. CN = China VN = Vietnam



HPRL01



WIRING DIAGRAM