

www.HARTtools.com
1.800.776.5191

Hart Consumer Products, Inc.
P.O. Box 1348, Anderson, SC 29622

THIS INSTRUCTION BOOKLET CONTAINS **IMPORTANT** SAFETY INFORMATION. PLEASE READ AND KEEP FOR FUTURE REFERENCE.

WARNING: To reduce the risk of injury, the user must read and understand the operator's manual before using this product.

GENERAL POWER TOOL SAFETY WARNINGS

WARNING: Read all safety warnings, instructions, illustrations and specifications provided with this power tool. Failure to follow all instructions listed below may result in electric shock, fire and/or serious injury.

Save all warnings and instructions for future reference. The term "power tool" in the warnings refers to your mains-operated (corded) power tool or battery-operated (cordless) power tool.

WORK AREA SAFETY
 • Keep work area clean and well lit. Cluttered or dark areas invite accidents.
 • Do not operate power tools in explosive atmospheres, such as in the presence of flammable liquids, gases or dust. Power tools create sparks which may ignite the dust or fumes.
 • Keep children and bystanders away while operating a power tool. Distractions can cause you to lose control.

ELECTRICAL SAFETY
 • Power tool plugs must match the outlet. Never modify the plug in any way. Do not use any adapter plugs with earthed (grounded) power tools. Unmodified plugs and matching outlets will reduce risk of electric shock.
 • Avoid body contact with earthed or grounded surfaces, such as pipes, radiators, ranges and refrigerators. There is an increased risk of electric shock if your body is earthed or grounded.
 • Do not expose power tools to rain or wet conditions. Water entering a power tool will increase the risk of electric shock.
 • Do not abuse the cord. Never use the cord for carrying, pulling or unplugging the power tool. Keep cord away from heat, oil, sharp edges or moving parts. Damaged or entangled cords increase the risk of electric shock.
 • When operating a power tool outdoors, use an extension cord suitable for outdoor use. Use of a cord suitable for outdoor use reduces the risk of electric shock.
 • If operating a power tool in a damp location is unavoidable, use a ground fault circuit interrupter (GFCI) protected supply. Use of a GFCI reduces the risk of electric shock.
 • Use only UL listed USB sources to charge this device. Use of any non-UL Listed USB sources may create a risk of fire.

PERSONAL SAFETY

- Stay alert, watch what you are doing and use common sense when operating a power tool. Do not use a power tool while you are tired or under the influence of drugs, alcohol or medication. A moment of inattention while operating power tools may result in serious personal injury.
- Use personal protective equipment. Always wear eye protection. Protective equipment such as a dust mask, non-skid safety shoes, hard hat, or hearing protection used for appropriate conditions will reduce personal injuries.
- Prevent unintentional starting. Ensure the switch is in the off-position before connecting to power source and/or battery pack, picking up or carrying the tool. Carrying power tools with your finger on the switch or energizing power tools that have the switch on invites accidents.
- Remove any adjusting key or wrench before turning the power tool on. A wrench or a key left attached to a rotating part of the power tool may result in personal injury.
- Do not overreach. Keep proper footing and balance at all times. This enables better control of the power tool in unexpected situations.
- Dress properly. Do not wear loose clothing or jewelry. Keep your hair and clothing away from moving parts. Loose clothes, jewelry or long hair can be caught in moving parts.
- If devices are provided for the connection of dust extraction and collection facilities, ensure these are connected and properly used. Use of dust collection can reduce dust-related hazards.
- Do not let familiarity gained from frequent use of tools allow you to become complacent and ignore tool safety principles. A careless action can cause severe injury within a fraction of a second.
- Do not wear loose clothing or jewelry. Contain long hair. Loose clothes, jewelry, or long hair can be drawn into air vents.
- Do not use on a ladder or unstable support. Stable footing on a solid surface enables better control of the power tool in unexpected situations.

POWER TOOL USE AND CARE

- Do not force the power tool. Use the correct power tool for your application. The correct power tool will do the job better and safer at the rate for which it was designed.
- Do not use the power tool if the switch does not turn it on and off. Any power tool that cannot be controlled with the switch is dangerous and must be repaired.
- Disconnect the plug from the power source and/or remove the battery pack, if detachable, from the power tool before making any adjustments, changing accessories, or storing power tools. Such preventive safety measures reduce the risk of starting the power tool accidentally.
- Store idle power tools out of the reach of children and do not allow persons unfamiliar with the power tool or these instructions to operate the power tool. Power tools are dangerous in the hands of untrained users.
- Maintain power tools and accessories. Check for misalignment or binding of moving parts, breakage of parts and any other condition that may affect the power tool's operation. If damaged, have the power tool repaired before use. Many accidents are caused by poorly maintained power tools.
- Keep cutting tools sharp and clean. Properly maintained cutting tools with sharp cutting edges are less likely to bind and are easier to control.
- Use the power tool, accessories and tool bits etc. in accordance with these instructions, taking into account the working conditions and the work to be performed. Use of the power tool for operations different from those intended could result in a hazardous situation.
- Keep handles and grasping surfaces dry, clean and free from oil and grease. Slippery handles and grasping surfaces do not allow for safe handling and control of the tool in unexpected situations.

BATTERY TOOL USE AND CARE

- Recharge only with the charger specified by the manufacturer. A charger that is suitable for one type of battery pack may create a risk of fire when used with another battery pack.
- Use power tools only with specifically designated battery packs. Use of any other battery packs may create a risk of injury and fire.
- When battery pack is not in use, keep it away from other metal objects, like paper clips, coins, keys, nails, screws or other small metal objects, that can make a connection from one terminal to another. Shorting the battery terminals together may cause burns or a fire.
- Under abusive conditions, liquid may be ejected from the battery; avoid contact. If contact accidentally occurs, flush with water. If liquid contacts eyes, additionally seek medical help. Liquid ejected from the battery may cause irritation or burns.
- Do not use a battery pack or tool that is damaged or modified. Damaged or modified batteries may exhibit unpredictable behavior resulting in fire, explosion or risk of injury.
- Do not expose a battery pack or tool to fire or excessive temperature. Exposure to fire or temperature above 265°F may cause explosion.
- Follow all charging instructions and do not charge the battery pack or tool outside the temperature range specified in the instructions. Charging improperly or at temperatures outside the specified range may damage the battery and increase the risk of fire.

SERVICE

- Have your power tool serviced by a qualified repair person using only identical replacement parts. This will ensure that the safety of the power tool is maintained.
- Never service damaged battery packs. Service of battery packs should only be performed by the manufacturer or authorized service providers.

SCREWDRIVER SAFETY WARNINGS

- Hold the power tool by insulated gripping surfaces, when performing an operation where the fastener may contact hidden wiring or its own cord. Fasteners contacting a "live" wire may make exposed metal parts of the power tool "live" and could give the operator an electric shock.
- Know your power tool. Read operator's manual carefully. Learn its applications and limitations, as well as the specific potential hazards related to this power tool. Following this rule will reduce the risk of electric shock, fire, or serious injury.
- Always wear eye protection with side shields marked to comply with ANSI Z87.1 when assembling parts, operating the tool, or performing maintenance. Following this rule will reduce the risk of serious personal injury.
- Protect your lungs. Wear a face or dust mask if the operation is dusty. Following this rule will reduce the risk of serious personal injury.
- Protect your hearing. Wear hearing protection during extended periods of operation. Following this rule will reduce the risk of serious personal injury.
- Battery tools do not have to be plugged into an electrical outlet; therefore, they are always in operating condition. Be aware of possible hazards when not using your battery tool or when changing accessories. Following this rule will reduce the risk of electric shock, fire, or serious personal injury.
- Do not place battery tools or their batteries near fire or heat. This will reduce the risk of explosion and possibly injury.
- Do not crush, drop or damage battery pack. Do not use a battery pack or charger that has been dropped or received a sharp blow. A damaged battery is subject to explosion. Properly dispose of a dropped or damaged battery immediately.
- Batteries can explode in the presence of a source of ignition, such as a pilot light. To reduce the risk of serious personal injury, never use any cordless product in the presence of open flame. An exploded battery can propel debris and chemicals. If exposed, flush with water immediately.
- Under extreme usage or temperature conditions, battery leakage may occur. If liquid comes in contact with your skin, wash immediately with soap and water. If liquid gets into your eyes, flush them with clean water for at least 10 minutes, then seek immediate medical attention. Following this rule will reduce the risk of serious personal injury.
- Save these instructions. Refer to them frequently and use them to instruct others who may use this tool. If you loan someone this tool, loan them these instructions also.

SYMBOLS

The following signal words and meanings are intended to explain the levels of risk associated with this product.

SYMBOL	SIGNAL	MEANING
	DANGER:	Indicates an imminently hazardous situation, which, if not avoided, will result in death or serious injury.
	WARNING:	Indicates a potentially hazardous situation, which, if not avoided, could result in death or serious injury.
	CAUTION:	Indicates a potentially hazardous situation, which, if not avoided, may result in minor or moderate injury.
	NOTICE:	(Without Safety Alert Symbol) Indicates important information not related to an injury hazard, such as a situation that may result in property damage.

Some of the following symbols may be used on this product. Please study them and learn their meaning. Proper interpretation of these symbols will allow you to operate the product better and safer.

SYMBOL	NAME	DESIGNATION/EXPLANATION
	Safety Alert	Indicates a potential personal injury hazard.
	Read Operator's Manual	To reduce the risk of injury, user must read and understand operator's manual before using this product.
	Eye Protection	Always wear eye protection with side shields marked to comply with ANSI Z87.1.
	Wet Conditions Alert	Risk of fire and burns. Do not expose battery, battery compartment, or electronic components to rain, water, or liquids.
	Recycle Symbol	This product uses lithium-ion (Li-ion) batteries. Local, state or federal laws may prohibit disposal of batteries in ordinary trash. Consult your local waste authority for information regarding available recycling and/or disposal options.
V	Volts	Voltage
min	Minutes	Time
	Direct Current	Type or a characteristic of current
nº	No Load Speed	Rotational speed, at no load
.../min	Per Minute	Revolutions, strokes, surface speed, orbits etc., per minute

FEATURES

PRODUCT SPECIFICATIONS

Switch.....Reversible
 Revolutions per minute250/min (RPM)

OPERATION

WARNING: Do not allow familiarity with this product to make you careless. Remember that a careless fraction of a second is sufficient to inflict serious injury.

WARNING: Always wear eye protection with side shields marked to comply with ANSI Z87.1. Hearing protection may also be required depending on the type of attachment used and as prescribed elsewhere in this Operator's Manual. Failure to do so could result in objects being thrown into your eyes and other possible serious injuries.

WARNING: Do not use any attachments or accessories not recommended by the manufacturer of this product. The use of attachments or accessories not recommended can result in serious personal injury.

WARNING: Battery products are always in operating condition. Therefore, the switch should always be locked when not in use or carrying at your side.

APPLICATIONS

- You may use this product for the purposes listed below:
- Driving screws with screwdriver bits
- Light-duty drilling

LED LIGHT FUNCTIONS

See Figure 1.
 When a USB cable is connected, the LED light will indicate the status of the battery.

BATTERY STATUS	LED LIGHT SCENARIO
Charging	Flashing
Fully Charged	Solid (No Flashes)

HIGH TEMPERATURE PROTECTION

This tool is equipped with a high temperature protection feature that automatically deactivates the tool when it is overheated. To resume operation, allow the tool to cool and then turn the tool on.

CHARGING THE TOOL

- See Figure 1.
- Turn off the screwdriver.
 - Insert the USB cable into the product as shown.
 - Connect the USB cable to any powered USB port, or connect it to a USB power adapter (not included) and plug the adapter into a power supply.
 - Make sure the power supply is normal household voltage, 120 volts, AC only, 60 Hz.
 - When the tool is charging, the green LED will flash on and off.
 - Do not place tool in an area of extreme heat or cold. It will charge best at normal room temperature.
 - After charging is complete, the LED will stop flashing and will remain green.
 - Disconnect the USB power adaptor (not included) from the power supply or disconnect the USB cable from the powered USB port once the tool is fully charged and ready for use.
 - Disconnect the USB cable from the tool.

DIRECTION OF ROTATION

See Figure 2.
 The direction of bit rotation is controlled by the forward and reverse buttons located on the handle. With the screwdriver held in normal operating position, fully depress the forward button for forward driving operation. The direction is reversed when the reverse button is depressed.

NOTE: The screwdriver will not run unless the direction of rotation selector is pushed fully up/forward or down/back.

NOTICE: To prevent gear damage, always allow the collet to come to a complete stop before changing the direction of rotation.

TO LOAD/RELEASE BITS

See Figure 3.
 Insert the bit into the collet and push the bit in as far as possible. To remove a bit, pull the bit straight out of the collet.

LED LIGHT

See Figure 3.
 The LED light, located on the front of the tool, illuminates during operation.

DRIVING SCREWS

See Figure 4 .
 Hold the tool firmly, maintain proper grip, and place the bit at the point where the screw is to be driven.

WARNING: Do not drive a screw where there is likely to be hidden wiring behind the surface. Contact with a "live" wire will make exposed metal parts of the tool "live" and possibly shock the operator. If you must drive a screw where hidden wire may be present, always hold tool by insulated gripping surfaces (handle) when performing the operation to prevent a shock to the operator.

- Press the forward or reverse button to start the tool.
- Apply only enough pressure to keep driving the screw. Do not force the tool. Let the tool do the work.

MAINTENANCE

WARNING: When servicing, use only identical replacement parts. Use of any other parts could create a hazard or cause product damage.

GENERAL MAINTENANCE

Avoid using solvents when cleaning plastic parts. Most plastics are susceptible to damage from various types of commercial solvents and may be damaged by their use. Use clean cloths to remove dirt, dust, oil, grease, etc.

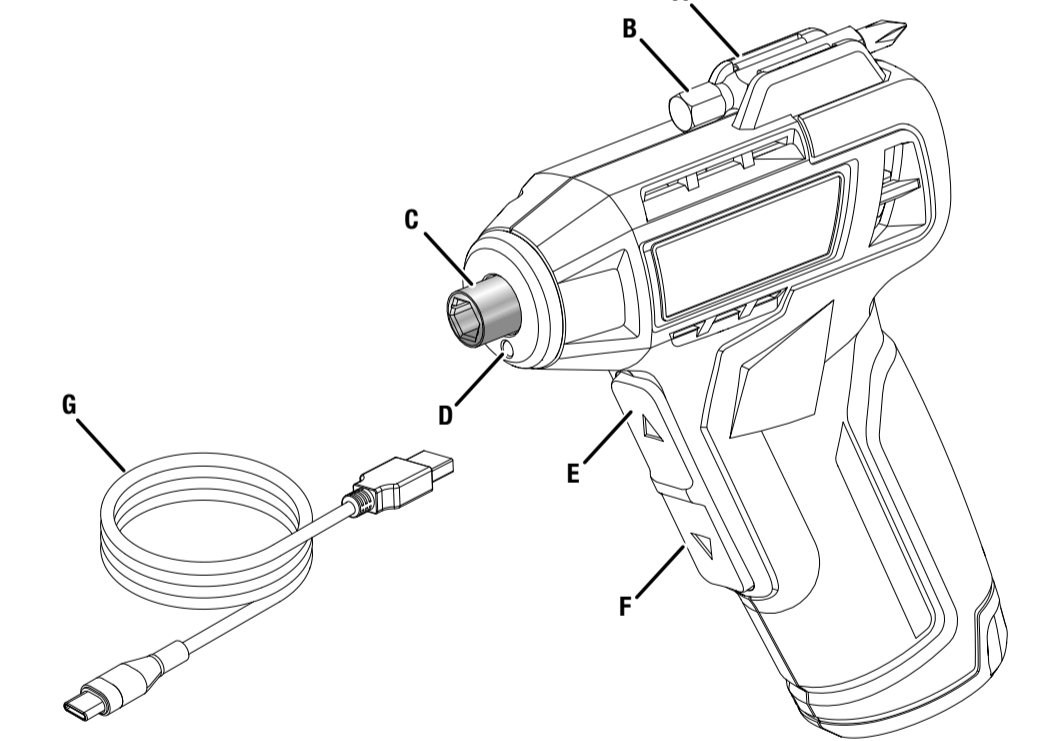
WARNING: Do not at any time let brake fluids, gasoline, petroleum-based products, penetrating oils, etc., come in contact with plastic parts. Chemicals can damage, weaken or destroy plastic which could result in serious personal injury.

BATTERIES

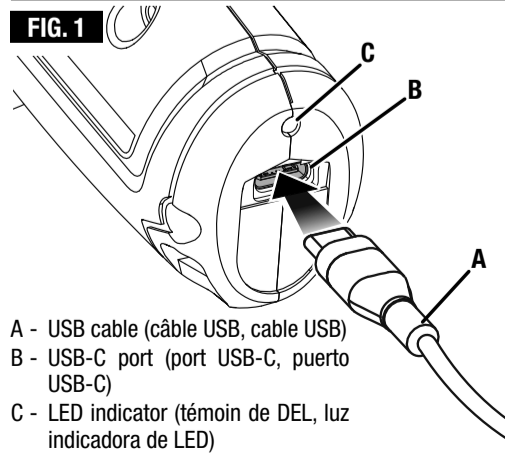
This product is equipped with a lithium-ion rechargeable battery. Length of service from each charging will depend on the type of work you are doing.
 The battery in this product has been designed to provide maximum trouble-free life. However, like all batteries, it will eventually wear out.

To obtain the longest possible battery life, we suggest the following:
 • Remove the USB cable from the product once it is fully charged and ready for use.

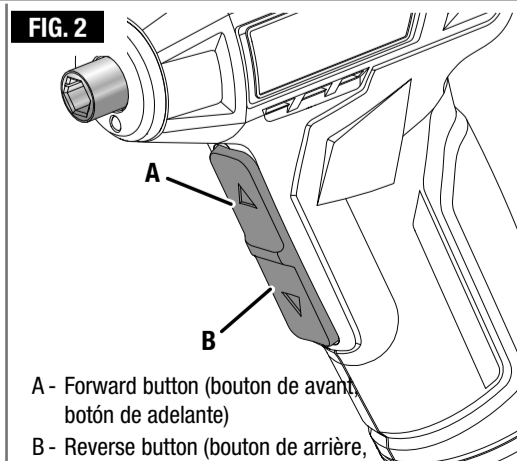
HFSD02



A - Bit storage (rangement d'embouts, compartimento de puntas)
 B - Bit (embout, broca)
 C - Collet (collet, portaherramientas)
 D - LED light (lampe à DEL, diodo luminiscente)
 E - Forward button (bouton de avant, botón de adelante)
 F - Reverse button (bouton de arrière, botón de atrás)
 G - USB cable (câble USB, cable USB)



A - USB cable (câble USB, cable USB)
 B - USB-C port (port USB-C, puerto USB-C)
 C - LED indicator (témoin de DEL, luz indicadora de LED)



A - Forward button (bouton de avant, botón de adelante)
 B - Reverse button (bouton de arrière, botón de atrás)

For product storage longer than 30 days:

- Store the product where the temperature is below 80°F.
- Store the product in a "discharged" condition.

BATTERY PACK DISPOSAL

This product contains lithium-ion batteries. Local, state or federal laws may prohibit disposal of lithium-ion batteries in ordinary trash.

WARNING: Do not attempt to disassemble the tool, or remove any component projecting from the tool. May result in electric shock, fire and/or serious personal injury. Prior to disposal, protect exposed terminals with heavy insulating tape to prevent shorting.

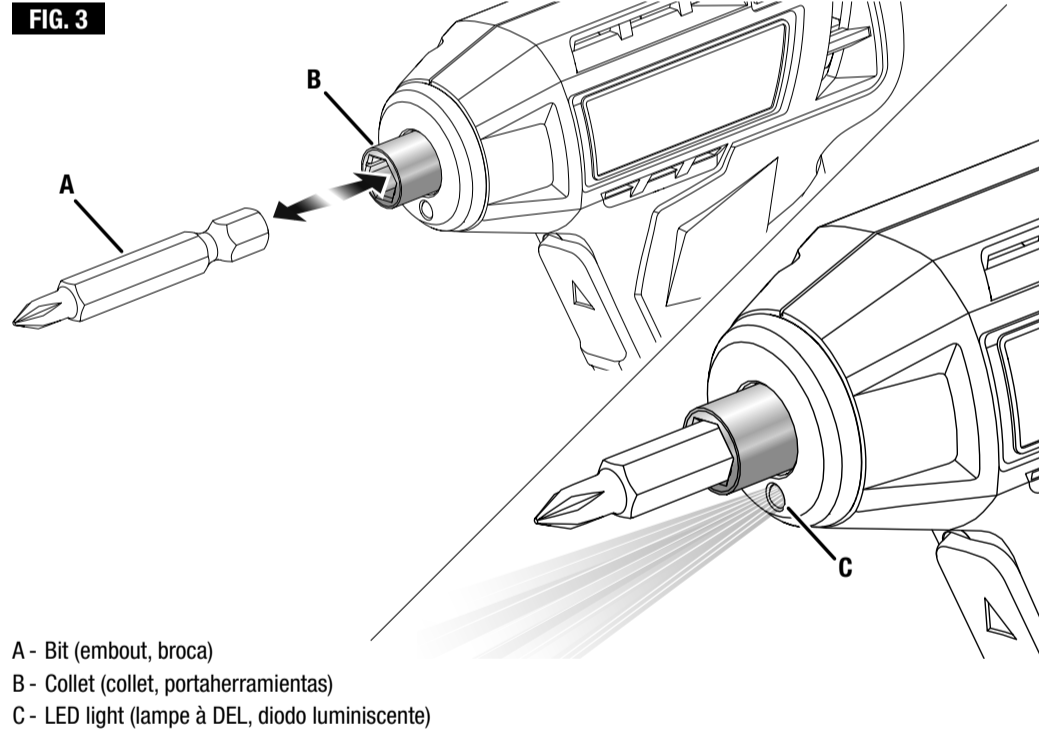
WARNING: Do not open the tool or attempt to remove the battery from the tool. Dispose of entire tool through your local waste removal authority.

LITHIUM ION BATTERIES
 The battery must be collected, recycled or disposed of in an environmentally sound manner.

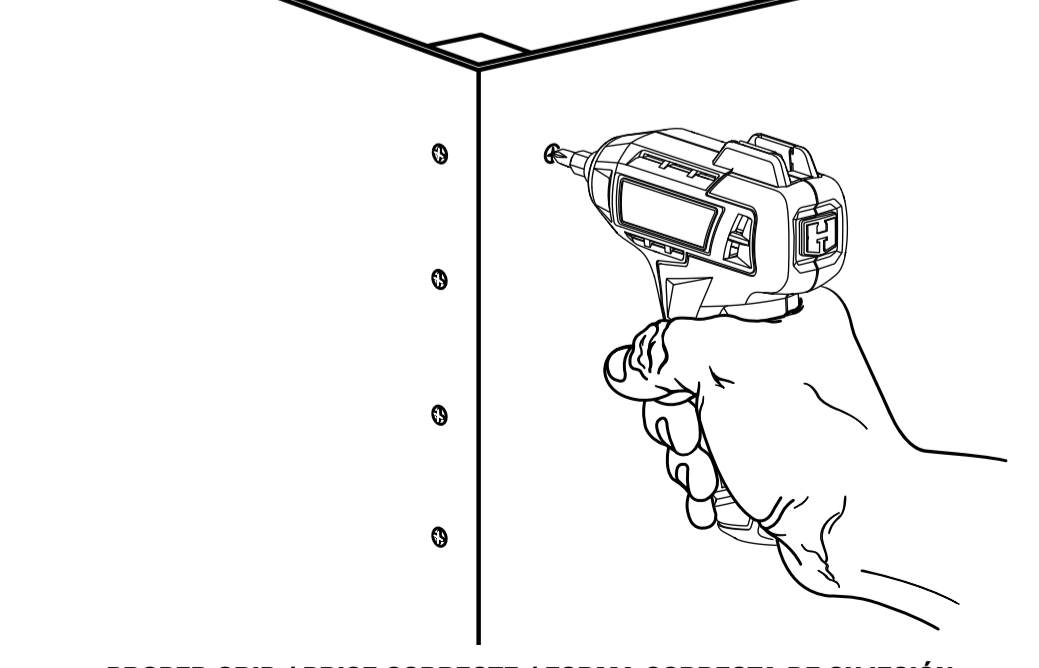
The EPA certified RBRC Battery Recycling Seal on the lithium-ion (Li-ion) battery indicates TTI Consumer Power Tools, Inc., a corporate affiliate of Techtronic Industries North America, Inc., is voluntarily participating in an industry program to collect and recycle these batteries at the end of their useful life, when taken out of service in the United States or Canada. The RBRC program provides a convenient alternative to placing used Li-ion batteries into the trash or the municipal waste stream, which may be illegal in your area.

Please call 1-800-8-BATTERY or visit https://www.call2recycle.org/ for information on Li-ion battery recycling and disposal bans/restrictions in your area. Techtronic Industries North America, Inc. involvement in this program is part of our commitment to preserving our environment and conserving our natural resources.

Service/Replacement Parts
Customer Support/Technical Support Authorized Service Center Locations
 Do not return this product to the store for missing parts or accessories.
 When calling for service, please communicate the model and serial number located on the product data plate. Model number on product may have additional letters at the end. These letters designate manufacturing information and should be provided when calling for service.
 Register your product: https://HARTtools.com/register. Warranty details available at www.HARTtools.com
 Proof of purchase is required to validate the 3-year limited Warranty.
 HART, the HART logo and H logo are trademarks of Techtronic Cordless GP.



A - Bit (embout, broca)
 B - Collet (collet, portaherramientas)
 C - LED light (lampe à DEL, diodo luminiscente)



PROPER GRIP / PRISE CORRECTE / FORMA CORRECTA DE SUJECCIÓN

