

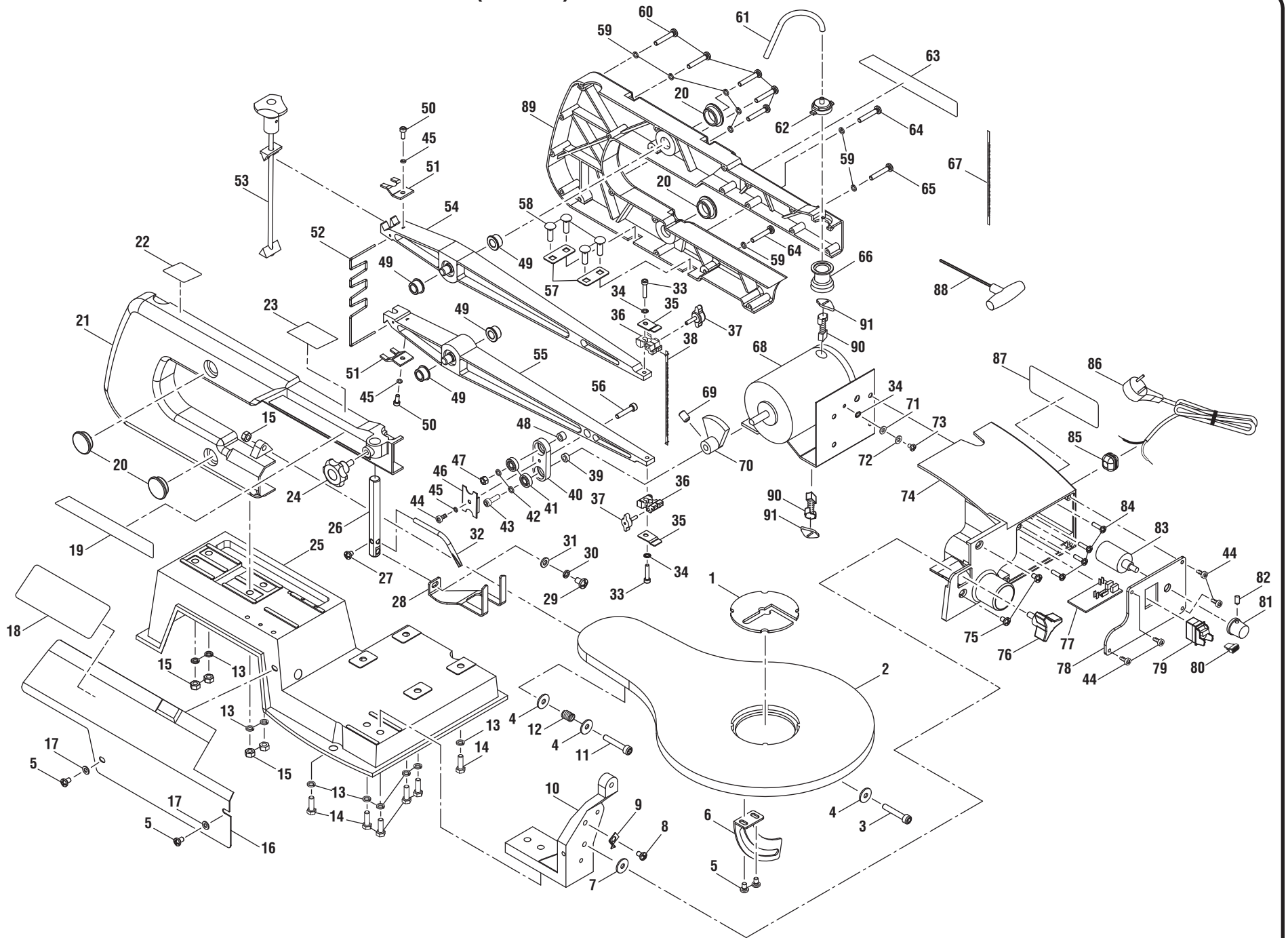
RYOBI

16 in. (406 mm) SCROLL SAW

MODEL NO. SC165VS

REPAIR SHEET

RYOBI 16 in. (406 mm) SCROLL SAW - MODEL SC165VS



RYOBI 16 in. (406 mm) SCROLL SAW – MODEL SC165VS

The model number will be found on a plate attached to the motor housing. Always mention the model number in all correspondence regarding your **Scroll Saw** or when ordering repair parts.

PARTS LIST

| KEY PART NO. NUMBER | DESCRIPTION | QTY | KEY PART NO. NUMBER | DESCRIPTION | QTY |
|------------------------|--|-----|------------------------|--|-----|
| 1 | 089051003064 Throat Plate..... | 1 | 27 | 089051003018 Screw (M5 x 6 mm)..... | 1 |
| 2 | 089051003063 Saw Table..... | 1 | 28 | 089051003050 Drop Foot..... | 1 |
| 3 | 089051003059 Hex Screw (M6 x 35 mm, Hex Soc. Hd.)..... | 1 | 29 | 089051003077 Screw (M6 x 10 mm)..... | 1 |
| 4 | 089051003057 Washer (M6)..... | 3 | 30 | 089051003080 Spring Washer (M6)..... | 1 |
| 5 | 089051003078 Screw (M5 x 8 mm)..... | 4 | 31 | 089051003051 Washer (M6)..... | 1 |
| 6 | 089051003062 Bevel Scale..... | 1 | 32 | 089051003017 Saw Dust Blower Tube..... | 1 |
| 7 | 089051003054 Washer (M6)..... | 1 | 33 | 089051003033 Screw (M4 x 16 mm, Hex Soc. Hd.)..... | 2 |
| 8 | 089051003052 Screw (M6 x 10 mm)..... | 1 | 34 | 089051003032 Star Washer (M4)..... | 4 |
| 9 | 089051003061 Scale Indicator..... | 1 | 35 | 089051003034 Clamp Plate..... | 2 |
| 10 | 089051003060 Table Support..... | 1 | 36 | 089051003031 Blade Support..... | 2 |
| 11 | 089051003055 Screw (M6 x 40 mm, Hex Soc. Hd.)..... | 1 | 37 | 089051003079 Blade Tension Knob..... | 2 |
| 12 | 089051003058 Spring..... | 1 | 38 | 089051003035 Blade (15 TPI)..... | 1 |
| 13 | 089051003005 Spring Washer (M6)..... | 10 | 39 | 089051003043 Washer..... | 1 |
| 14 | 089051003056 Screw (M6 x 20 mm, Hex Soc. Hd.)..... | 6 | 40 | 089051003038 Link Assembly..... | 1 |
| 15 | 089051003004 Hex Nut (M6)..... | 5 | 41 | 089051003039 Ball Bearing (625Z, 80025)..... | 2 |
| 16 | 089051003003 Side Cover..... | 1 | 42 | 089051003020 Spring Washer (M5)..... | 2 |
| 17 | 089051003002 Washer (M5)..... | 2 | 43 | 089051003044 Hex Screw (M5 x 16 mm)..... | 1 |
| 18 | 089051003905 Warning Label..... | 1 | 44 | 089051003042 Screw (M4.2 x 9.5 mm)..... | 5 |
| 19 | 089051003902 Right Logo Label..... | 1 | 45 | 089051003012 Spring Washer (M4)..... | 3 |
| 20 | 089051003007 Oil Cap..... | 4 | 46 | 089051003041 Bearing Retainer..... | 1 |
| 21 | 089051003008 Left Arm Housing..... | 1 | 47 | 089051003040 Hex Nut (M5)..... | 1 |
| 22 | 089051003903 Blade Tension Label..... | 1 | 48 | 089051003037 Spacer..... | 1 |
| 23 | 089051003906 No Hands Label..... | 1 | 49 | 089051003016 Arm Bearing..... | 4 |
| 24 | 089051003046 Drop Foot Lock Knob..... | 1 | 50 | 089051003013 Screw (M4 x 10 mm)..... | 2 |
| 25 | 089051003006 Saw Base..... | 1 | 51 | 089051003011 Pressure Plate..... | 2 |
| 26 | 089051003047 Drop Foot Rod..... | 1 | | | |

RYOBI 16 in. (406 mm) SCROLL SAW – MODEL SC165VS

The model number will be found on a plate attached to the motor housing. Always mention the model number in all correspondence regarding your **Scroll Saw** or when ordering repair parts.

PARTS LIST

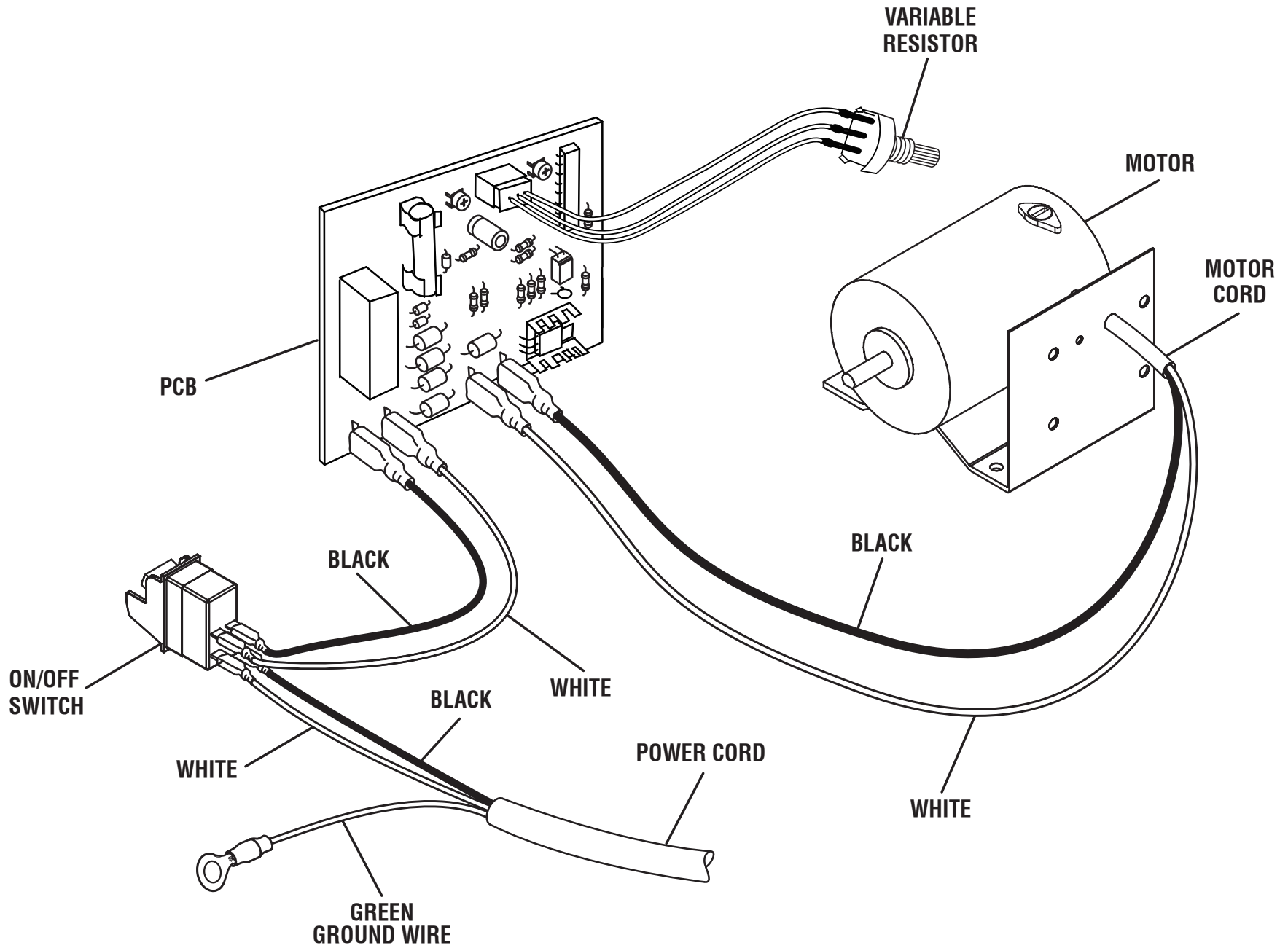
| KEY PART NO. NUMBER | DESCRIPTION | QTY | KEY PART NO. NUMBER | DESCRIPTION | QTY | | |
|------------------------|--------------|--|------------------------|-------------|--------------|--------------------------------------|---|
| 52 | 089051003010 | Extension Spring..... | 1 | 73 | 089051003068 | Screw (M4 x 8 mm)..... | 2 |
| 53 | 089051003009 | Blade Tension Knob Assembly | 1 | 74 | 089051003072 | Switch Box..... | 1 |
| 54 | 089051003015 | Upper Arm | 1 | 75 | 089051003001 | Screw (M5 x 8 mm)..... | 2 |
| 55 | 089051003014 | Lower Arm..... | 1 | 76 | 089051003025 | Bevel Lock Knob..... | 1 |
| 56 | 089051003036 | Screw (M5 x 25 mm, Hex Soc. Hd.)..... | 1 | 77 | 089051003049 | Circuit Board..... | 1 |
| 57 | 089051003029 | Bolt Retainer | 2 | 78 | 089051003026 | Switch Plate..... | 1 |
| 58 | 089051003030 | Carriage Bolt (M6 x 20 mm)..... | 4 | 79 | 089051003027 | Switch (Inc. Key No. 80)..... | 1 |
| 59 | 089051003022 | Spring Washer (M5) | 8 | 80 | 089051003083 | Switch Key | 1 |
| 60 | 089051003021 | Screw (M5 x 35 mm)..... | 5 | 81 | 089051003065 | Variable Speed Knob | 1 |
| 61 | 089051003053 | PVC Tube | 1 | 82 | 089051003066 | Screw (M5 x 6 mm, Cap Soc. Hd.)..... | 1 |
| 62 | 089051003023 | Bellows Cap..... | 1 | 83 | 089051003075 | Variable Speed Control | 1 |
| 63 | 089051003901 | Left Logo Label..... | 1 | 84 | 089051003074 | Screw (M4 x 10 mm)..... | 4 |
| 64 | 089051003048 | Screw (M5 x 30 mm)..... | 2 | 85 | 089051003073 | Cord Clamp..... | 1 |
| 65 | 089051003024 | Screw (M5 x 28 mm)..... | 1 | 86 | 089051003067 | Power Cord..... | 1 |
| 66 | 089051003028 | Bellows | 1 | 87 | 089051003000 | Data Label..... | 1 |
| 67 | 089051003076 | Blade (18 TPI)..... | 1 | 88 | 089051003045 | T-Handle Hex Key (3 mm) | 1 |
| 68 | 089051003071 | Motor Assembly..... | 1 | 89 | 089051003019 | Right Arm Housing..... | 1 |
| 69 | 089051003069 | Screw (M4 x 12 mm, Cap Soc. Hd.) | 1 | 90 | 089051003086 | Brush Assembly | 2 |
| 70 | 089051003070 | Eccentric | 1 | 91 | 089051003087 | Brush Cap | 2 |
| 71 | 089051003082 | Washer (M4)..... | 2 | | | | |
| 72 | 089051003081 | Spring Washer (M4) | 2 | | | | |

Not Shown:

990000860 Operator's Manual

11-30-15
(Rev:02)

RYOBI 16 in. (406 mm) SCROLL SAW – MODEL SC165VS



WIRING DIAGRAM