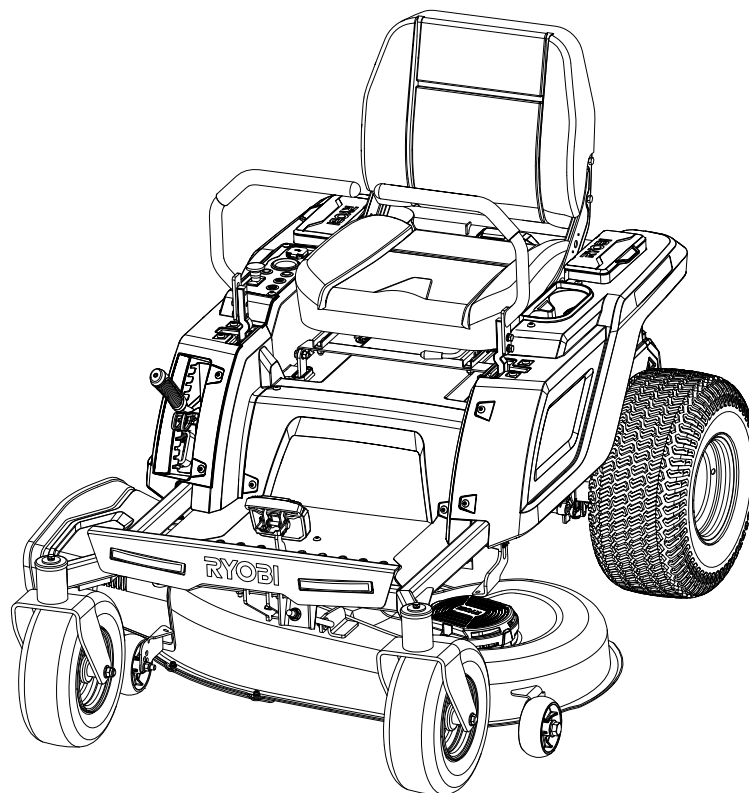


REPLACEMENT PARTS LIST

BRAND		DESCRIPTION
RYOBI		42 in. Electric Zero Turn Mower
MODEL NO.	MFG. NO.	
RY48ZTR75	099749015	
RY48ZTR100	099749016	



TECHTRONIC INDUSTRIES POWER EQUIPMENT

P.O. Box 1288, Anderson, SC 29622 ■ 1-800-525-2579 ■ www.ryobitools.com

995000717

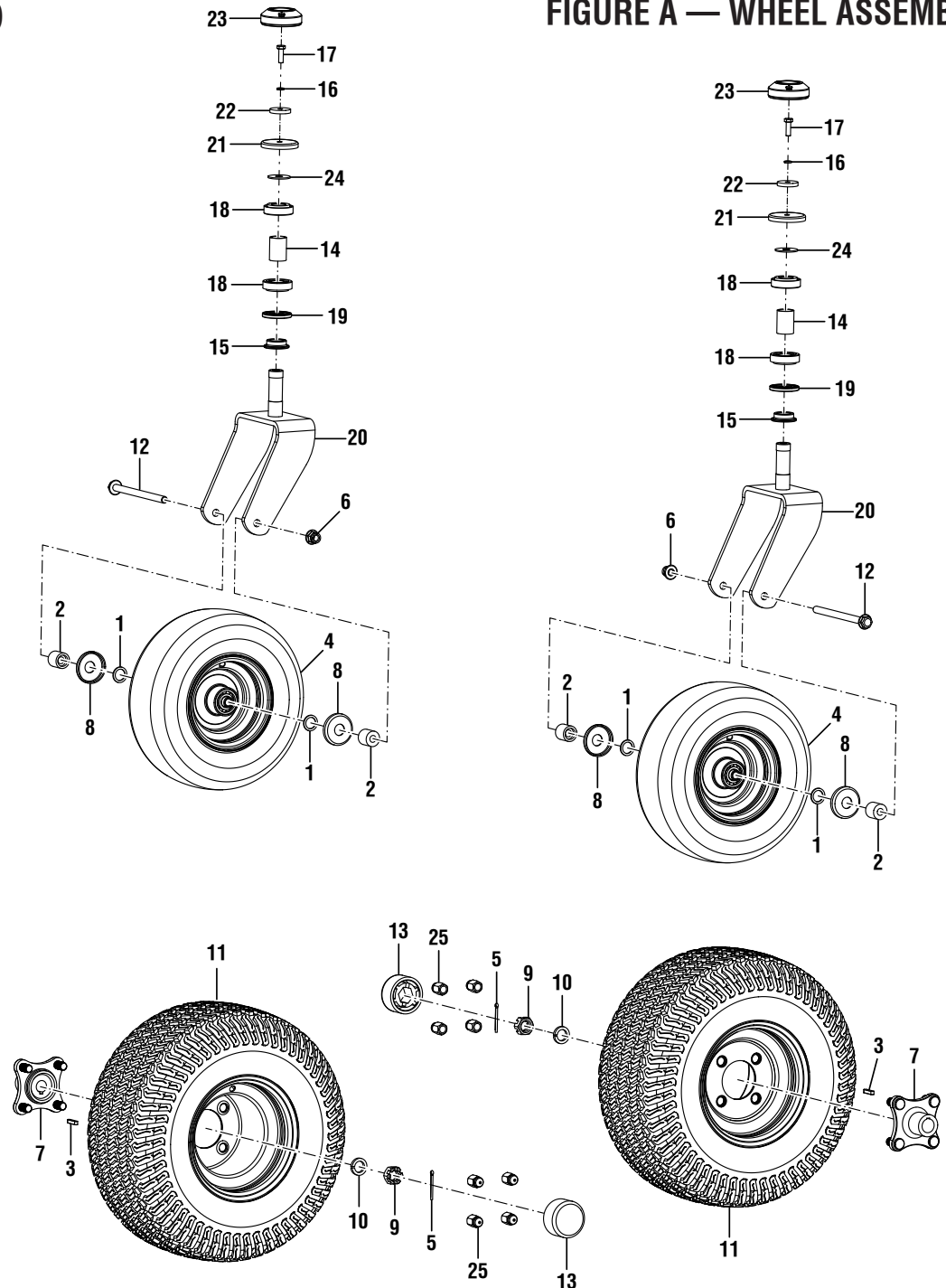
4-21-21 (Rev:03)

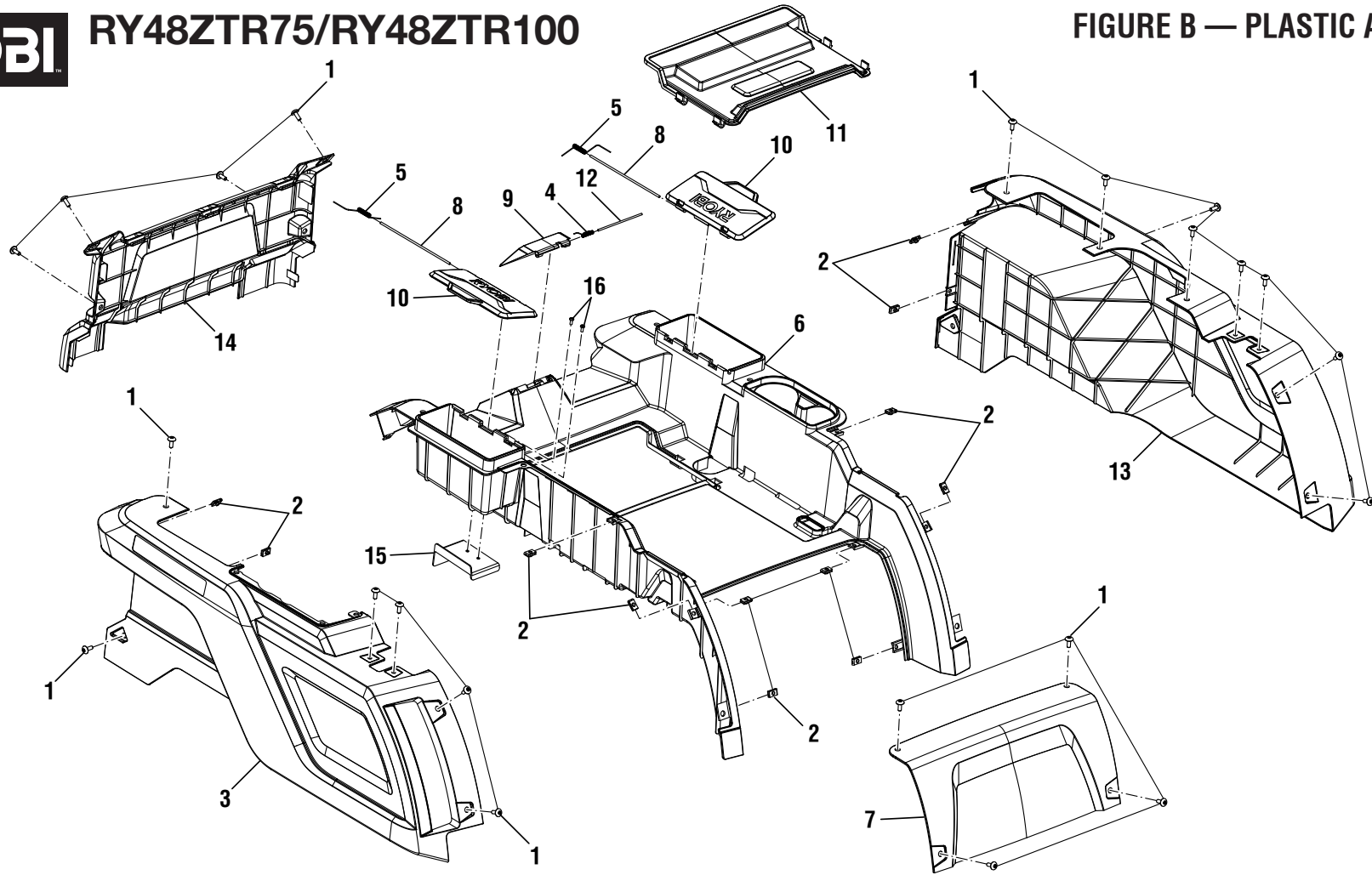
The model number and manufacturing location will be found on a label attached to the product. Always mention this information in all communications regarding this product and when ordering parts.

PARTS LIST — FIGURE A

KEY NO.	PART NO.	DESCRIPTION	QTY.
1	994842001	Washer (28 x 20.5 x 2t)	4
2	996997001	Caster Wheel Spacer	4
3	996988001	Key (6 mm x 6 mm x 30 mm)	2
4	996996001	Caster Wheel	2
5	997139001	Drive Shaft Cotter Pin	2
6	996999001	Flange Nut (M12)	2
7	996987001	Wheel Hub	2
8	994857001	Front Wheel Bearing Cover	4
9	997138001	Castle Nut (M20)	2
10	997134001	Lock Spring Washer (20.6 x 30.6 x 4.8t)	2
11	996989001	Rear Wheel Assembly	2
12	996998001	Flange Bolt (M12 x 170 mm, Hex Hd.)	2
13	996029001	Wheel Hub Cover	2
14	996993001	Bearing Assembly Spacer	2
15	996991001	Bearing Assembly Base	2
16	994770001	Lock Washer (M8)	2
17	997142001	Bolt (M8 x 25 mm)	2
18	996992001	Roller Bearing (ID25 mm x OD52 mm)	4
19	997125001	Rubber Seal	2
20	996990001	Caster Fork	2
21	996994001	Bearing Assembly Cap	2
22	996995001	Fender Washer (OD37 x ID8.4 x 6t)	2
23	997130001	Caster Fork Cover	2
24	997036001	Fender Washer (OD40 x ID12.5 x 2t)	2
25	997143001	Acorn Nut (M14)	8

FIGURE A — WHEEL ASSEMBLY

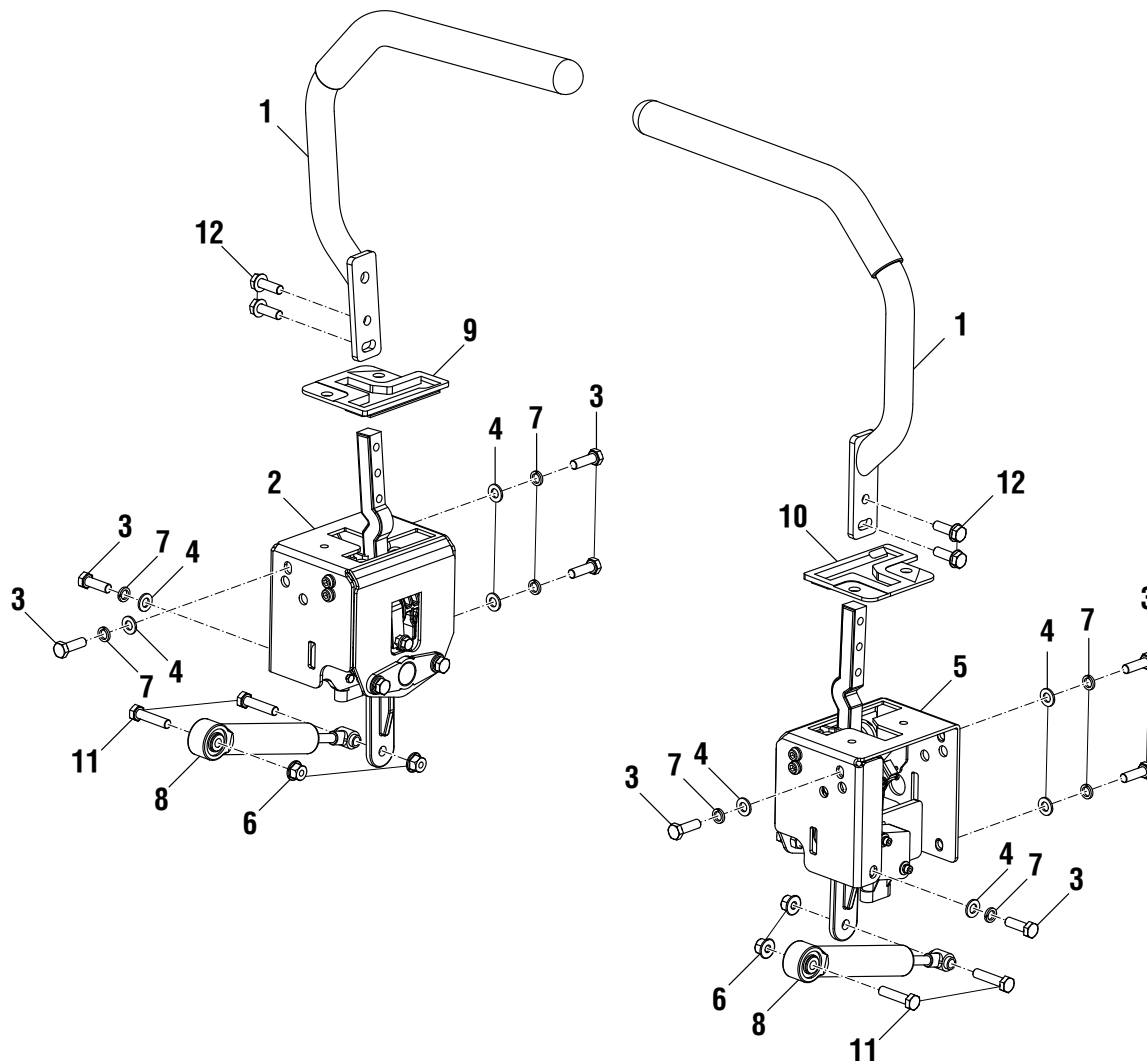




PARTS LIST — FIGURE B

KEY NO.	PART NO.	DESCRIPTION	QTY.
1	994989001	Screw (M6 x 16 mm, Torx Pan Hd.)	22
2	994785001	Clip-On Nut (M6)	12
3	997064001	Right Trim Cover	1
4	997075001	Charger Port Door Spring	1
5	997076001	Storage Box Spring	2
6	997061001	Center Trim Cover	1
7	997066001	Front Access Panel	1
8	997070001	Storage Box Hinge Pin	2

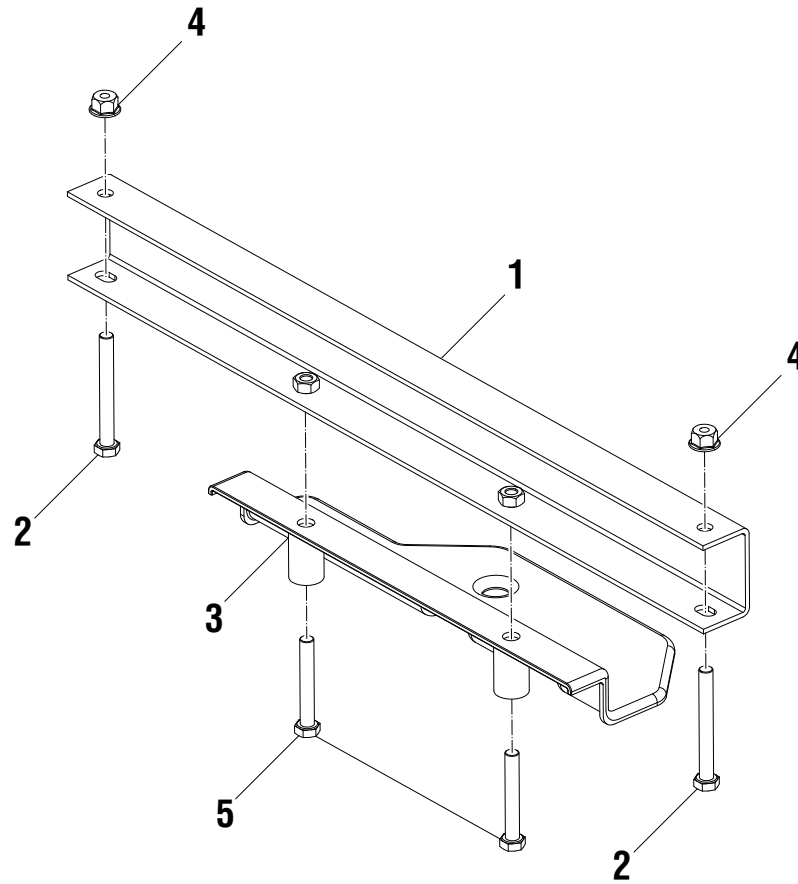
KEY NO.	PART NO.	DESCRIPTION	QTY.
9	997067001	Charger Port Door	1
10	997068001	Storage Box Lid	2
11	997065001	Center Access Panel	1
12	997069001	Charger Port Door Hinge Pin	1
13	997063001	Left Trim Cover	1
14	997062001	Rear Trim Cover	1
15	997087001	Main Relay Guard	1
16	996297001	Screw (M4 x 10 mm, Pan Hd.)	2



PARTS LIST — FIGURE C

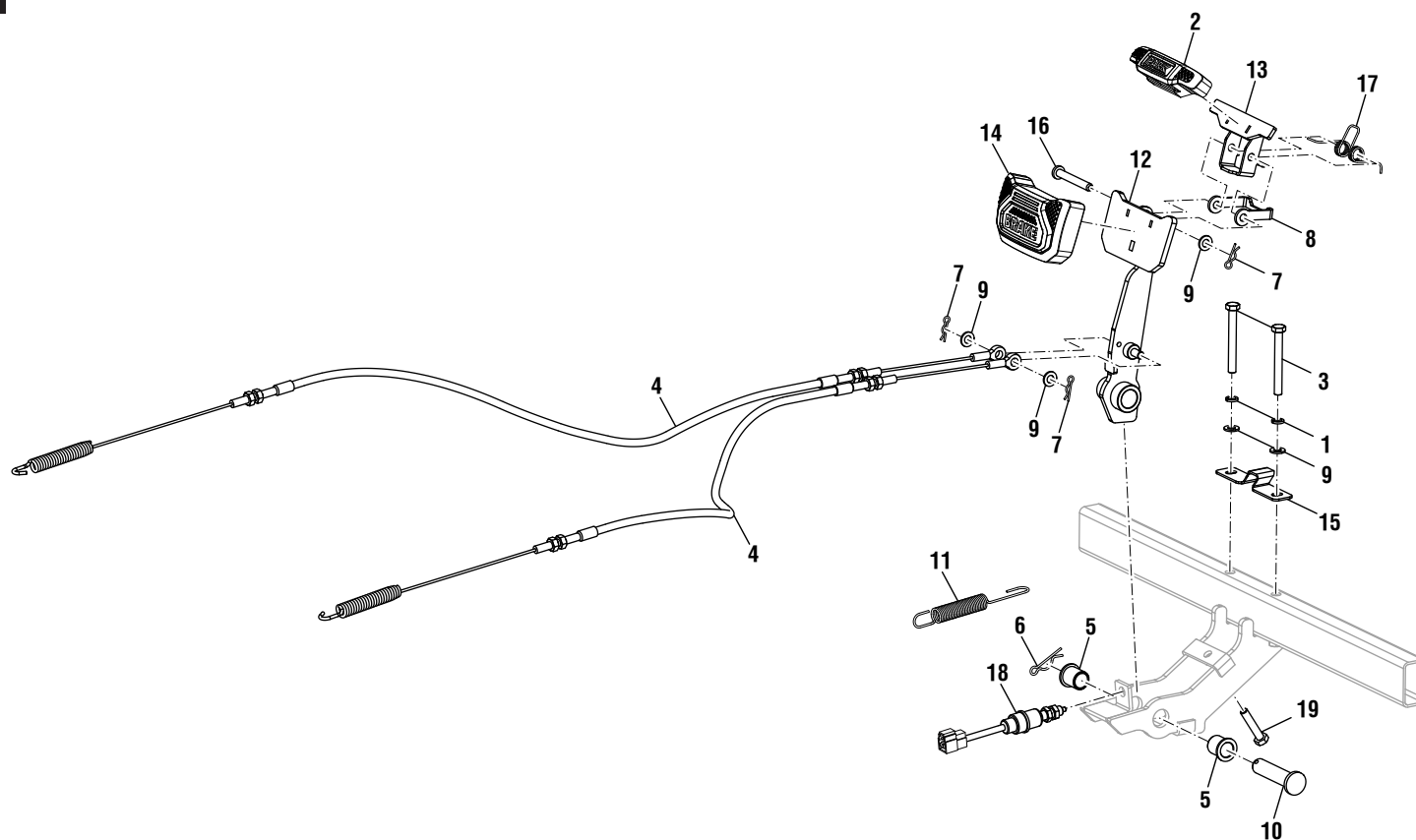
KEY NO.	PART NO.	DESCRIPTION	QTY.
1	997045001	Control Arm Handle	2
2	997144001	Control Arm Assembly, Left	1
3	996046001	Bolt (M8 x 25 mm, Hex Hd.)	8
4	994771001	Washer (M8)	8
5	997145001	Control Arm Assembly, Right	1
6	994867001	Flange Nut (M8)	4

KEY NO.	PART NO.	DESCRIPTION	QTY.
7	994770001	Lock Washer (M8)	8
8	997072001	Control Arm Damper	2
9	997043001	T Slot Insert, Left	1
10	997044001	T Slot Insert, Right	1
11	997135001	Bolt (M8 x 35 mm, Hex Hd.)	4
12	997146001	Bolt w/Washer (M8 x 25 mm, Hex Hd.)	4



PARTS LIST — FIGURE D

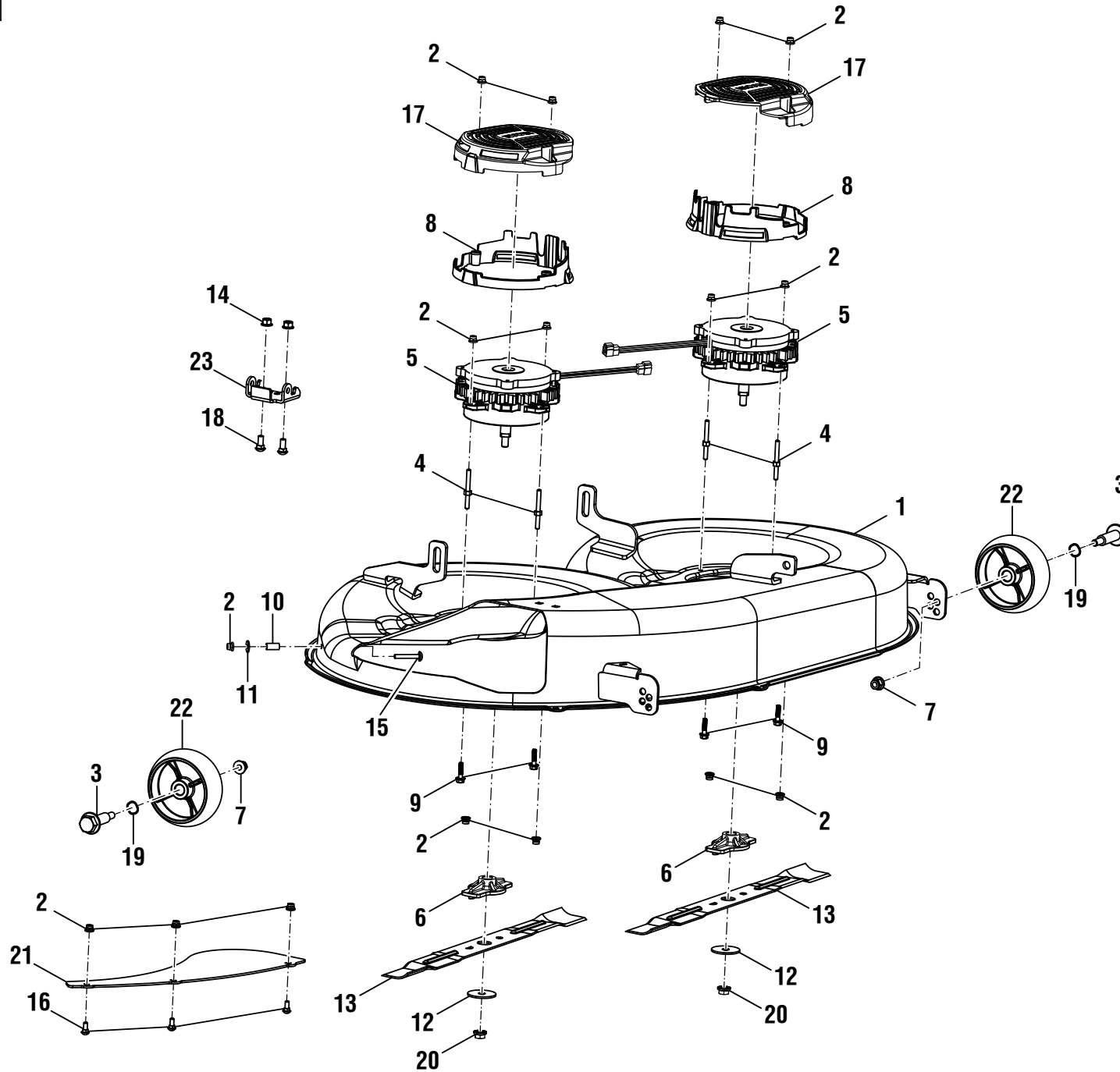
KEY NO.	PART NO.	DESCRIPTION	QTY.
1	996983001	Rear Cross Member, Frame	1
2	997089001	Bolt (M8 x 70 mm, Hex Hd.)	2
3	997051001	Tow Hitch	1
4	994867001	Flange Nut (M8)	2
5	997136001	Bolt (M8 x 55 mm, Hex Hd.)	2



PARTS LIST — FIGURE E

KEY NO.	PART NO.	DESCRIPTION	QTY.
1	994770001	Lock Washer (M8)	2
2	997010001	Parking Brake Rubber Pad	1
3	997089001	Bolt (M8 x 70 mm, Hex Hd.)	2
4	997012001	Brake Cable	2
5	994928001	Bushing, Brake Pedal	2
6	994930001	Cotter Pin (16 mm)	1
7	996013001	Cotter Pin	3
8	997006001	Parking Brake Latch	1
9	994771001	Washer (M8)	5
10	994929001	Pedal Axle Pin	1

KEY NO.	PART NO.	DESCRIPTION	QTY.
11	997011001	Brake Pedal Spring	1
12	997004001	Brake Pedal Lever	1
13	997005001	Parking Brake Pedal	1
14	997009001	Brake Pedal Rubber Pad	1
15	997003001	Brake Latch Hook	1
16	997007001	Clevis Pin (M8 x 60 mm)	1
17	997008001	Parking Brake Torsion Spring	1
18	994837001	Brake Switch	1
19	997131001	Bolt (M8 x 40 mm, Hex Hd.)	1



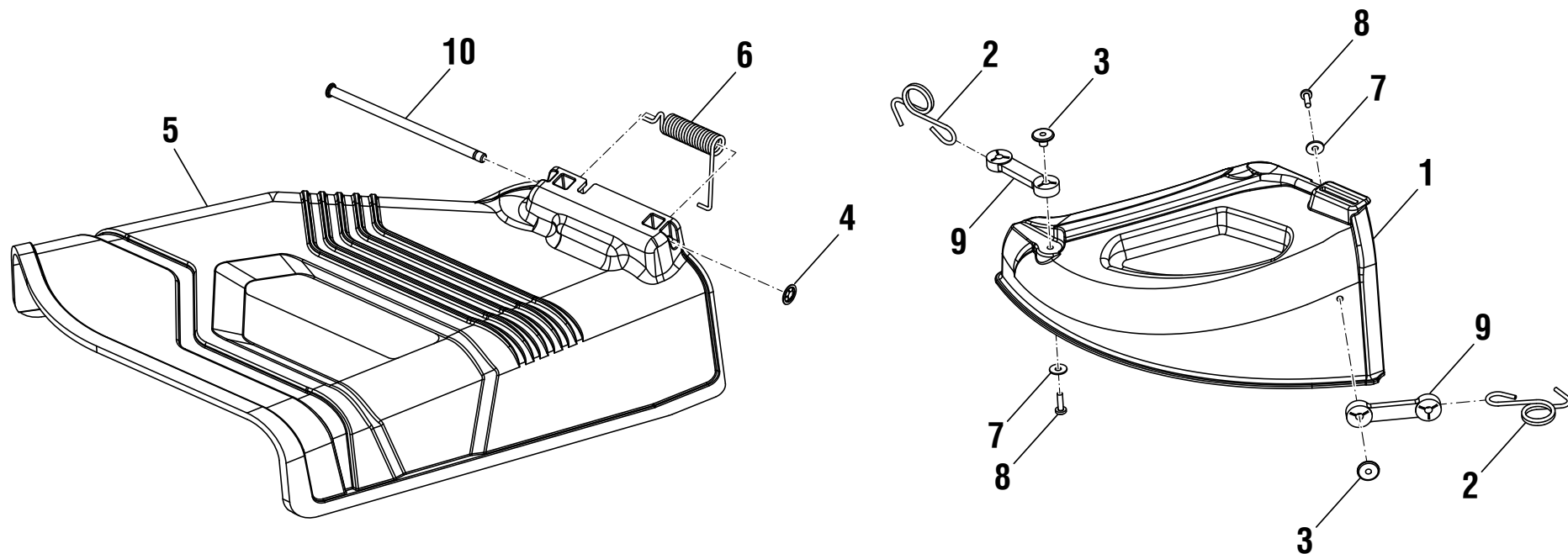


RY48ZTR75/R48ZTR100

PARTS LIST — FIGURE F

KEY NO.	PART NO.	DESCRIPTION	QTY.
1	997020001	Deck, 42 in.	1
2	996251001	Flange Lock Nut (M6 x 1)	16
3	996205001	M10 x 70 Shoulder Bolt (16 Od 47.5 mm)	2
4	996201001	Threaded Stud (M6 x 35 mm)	4
5	997026001	Deck Motor	2
6	997027001	Blade Adapter	2
7	996192001	Lock Nut (M10 X 1.5 mm, Hex Hd.)	2
8	997083001	Deck Motor Cover, Bottom	2
9	996057001	Flange Bolt (M6 x 25 mm, Hex Hd.)	4
10	996039001	Deck Bagger Chute Mounting Shaft	1
11	996034001	Flat Washer (M6, 18 mm OD)	1
12	997028001	Blade Retainer Washer	2

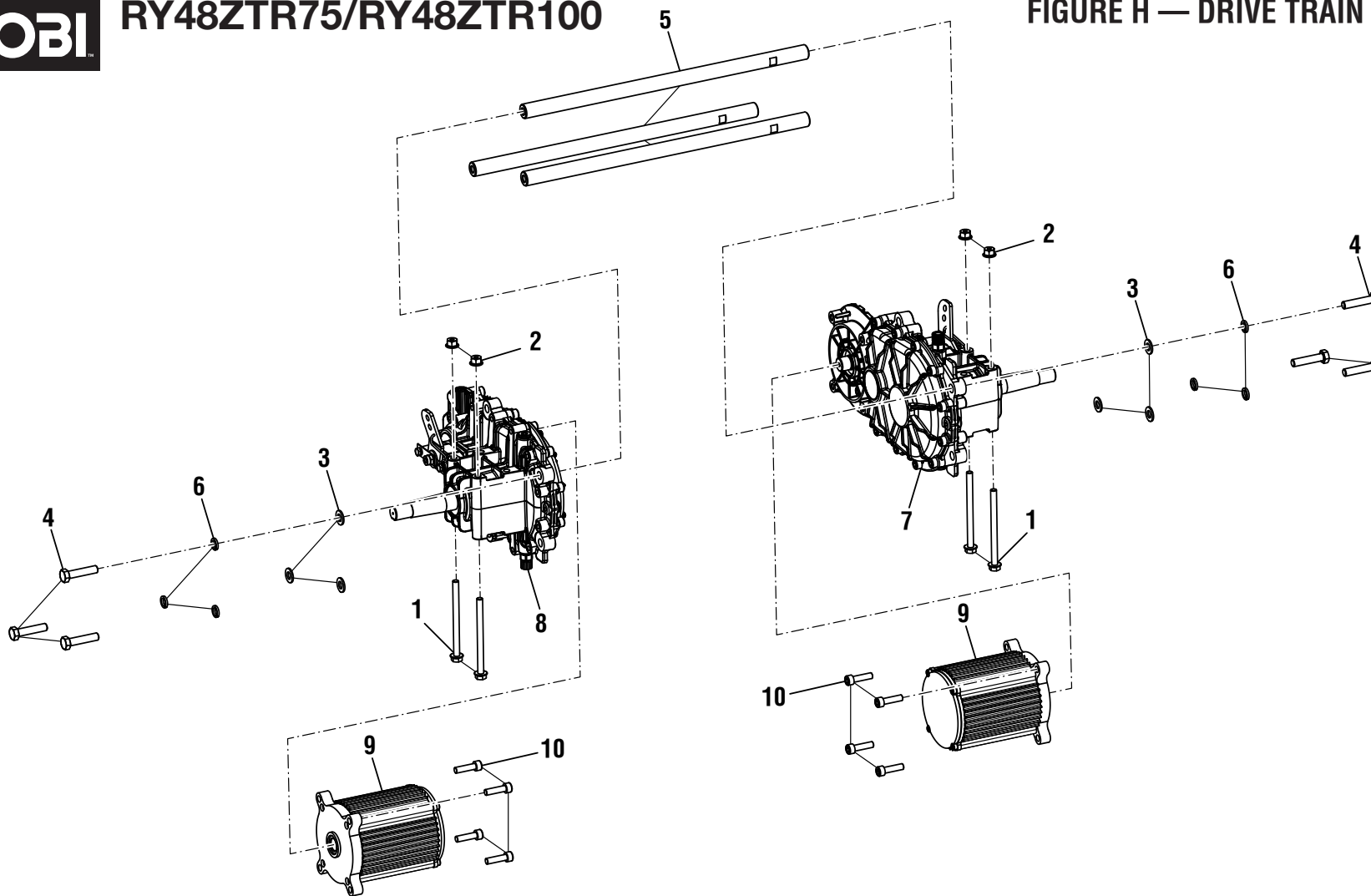
KEY NO.	PART NO.	DESCRIPTION	QTY.
13	682282001	Blade (21 in.)	2
14	994867001	Flange Nut (M8)	2
15	996250001	Screw (M6 x 40 mm, Torx Hd.)	1
16	994791001	Carriage Bolt (M6 x 16 mm)	3
17	997084001	Deck Motor Cover, Top	2
18	996050001	Carriage Bolt (M8 x 20 mm)	2
19	996355001	Spring Washer	2
20	996261001	Lock Nut (M10 x 1.25)	2
21	997074001	Deck Baffle (42 in.)	1
22	996265001	Front Deck Roller Wheel (127 Dia.)	2
23	997127001	Discharge Chute Mounting Bracket	1



PARTS LIST — FIGURE G

KEY NO.	PART NO.	DESCRIPTION	QTY.
1	997085001	Mulch Plug, ZTR	1
2	996211001	Bagger Kit Latch Spring	2
3	996212001	Anchor, Bungie, Riding Mower	2
4	996292001	Push-On Retainer Clip	1
5	997060001	Side Discharge Chute, 42 in. Deck	1

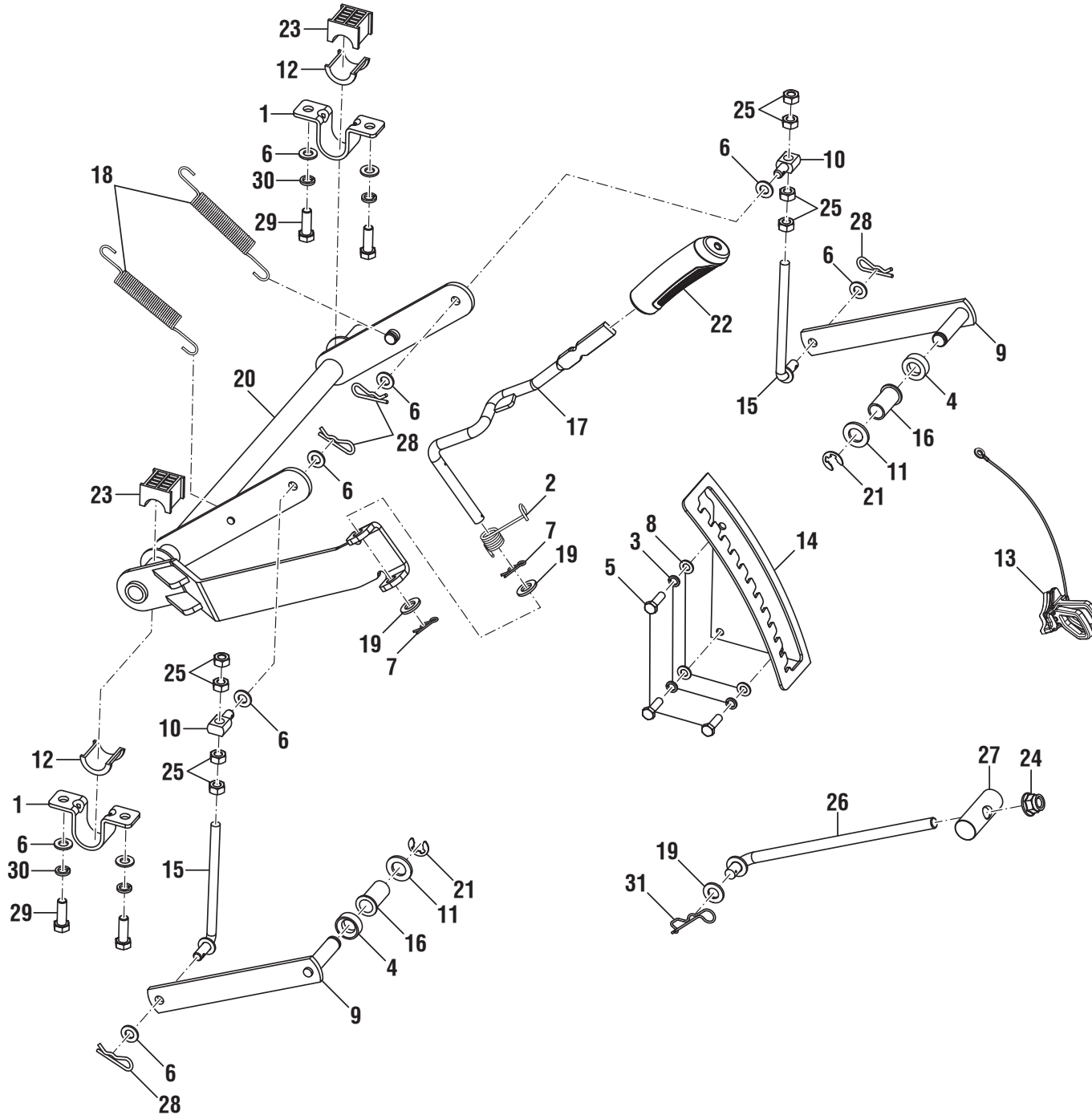
KEY NO.	PART NO.	DESCRIPTION	QTY.
6	994980001	Torsion Spring (19 x 62 x 3.02)	1
7	996217001	Washer (ID5.3 x OD15 x 1t)	2
8	996213001	Anchor Screw, Bungie, Riding Mower	2
9	996203001	Rubber Strap, Mulching Cover	2
10	994981001	Hinge Pin (7.85 x 175.85)	1



PARTS LIST — FIGURE H

KEY NO.	PART NO.	DESCRIPTION	QTY.
1	997088001	Flange Bolt (M8 x 110 mm, Hex Hd.)	4
2	994867001	Flange Nut (M8)	4
3	994996001	Washer (M10 x 20)	6
4	996323001	Bolt (M10 x 45 mm, Hex Hd.)	6
5	997000001	Tie Rod	3

KEY NO.	PART NO.	DESCRIPTION	QTY.
6	994998001	Lock Spring Washer (10.9 x 16.1 x 2.6t)	6
7	997158001	Gearbox, Left	1
8	997159001	Gearbox, Right	1
9	997157001	Drive Motor, ZTR	2
10	997160001	Screw (M8 x 30 mm, Soc Hd.)	8



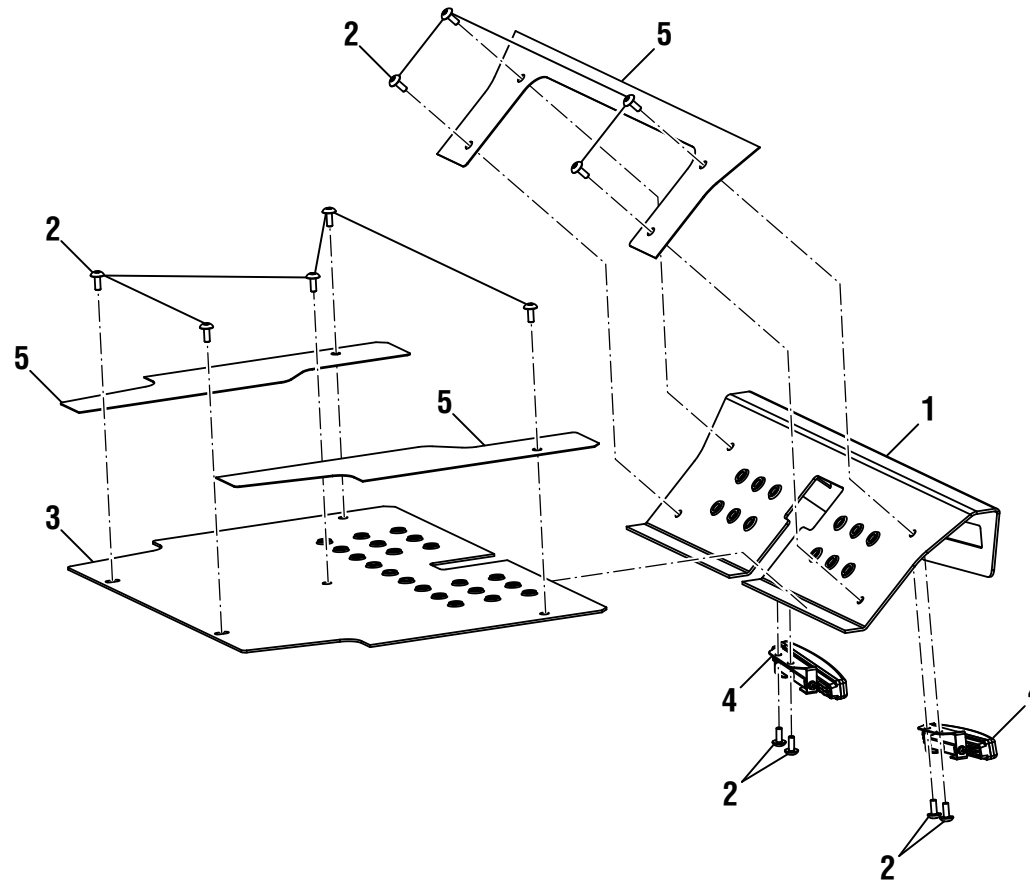


RY48ZTR75/R48ZTR100

PARTS LIST — FIGURE I

KEY NO.	PART NO.	DESCRIPTION	QTY.
1	997013001	Deck Lift Axle Mount	2
2	997023001	Deck Lift Lever Torsion Spring	1
3	994770001	Lock Washer (M8)	3
4	997093001	Deck Lift Linkage Spacer	2
5	996046001	Bolt (M8 x 25 mm)	3
6	994996001	Washer (M10 x 20)	10
7	994892001	Cotter Pin	2
8	994771001	Washer (M8)	3
9	997018001	Deck Lift Linkage	2
10	997126001	Hanger Stud, ZTR	2
11	994763001	Washer (17 x 30 x 3t)	2
12	997015001	Deck Lift Axle Bushing, Bottom	2
13	997128001	Cut Height Memory Plug	1
14	997024001	Detent Plate	1
15	997017001	J Hook, Deck Hanger	2
16	997019001	Deck Lift Linkage Bushing	2

KEY NO.	PART NO.	DESCRIPTION	QTY.
17	997022001	Deck Lift Lever	1
18	997025001	Deck Lift Spring	2
19	994891001	Washer (M13)	3
20	997016001	Deck Lift Linkage and Axle Assembly	1
21	994833001	E-Clip, 12 mm Shaft Dia.	2
22	994972001	Decklift Handle	1
23	997014001	Deck Lift Axle Bushing, Top	2
24	996999001	Flange Nut (M12)	1
25	996263001	Nut (M10 x 1.5)	8
26	997021001	J Hook, Front Deck Hanger	1
27	997097001	Front Deck Hanger Pivot Axle	1
28	996233001	Cotter Pin	4
29	997106001	Hex Head (M10 x 30 mm)	4
30	994998001	Lock Spring Washer (10.9 x 16.1 x 2.6t)	4
31	997140001	Hinge Cotter Pin	1

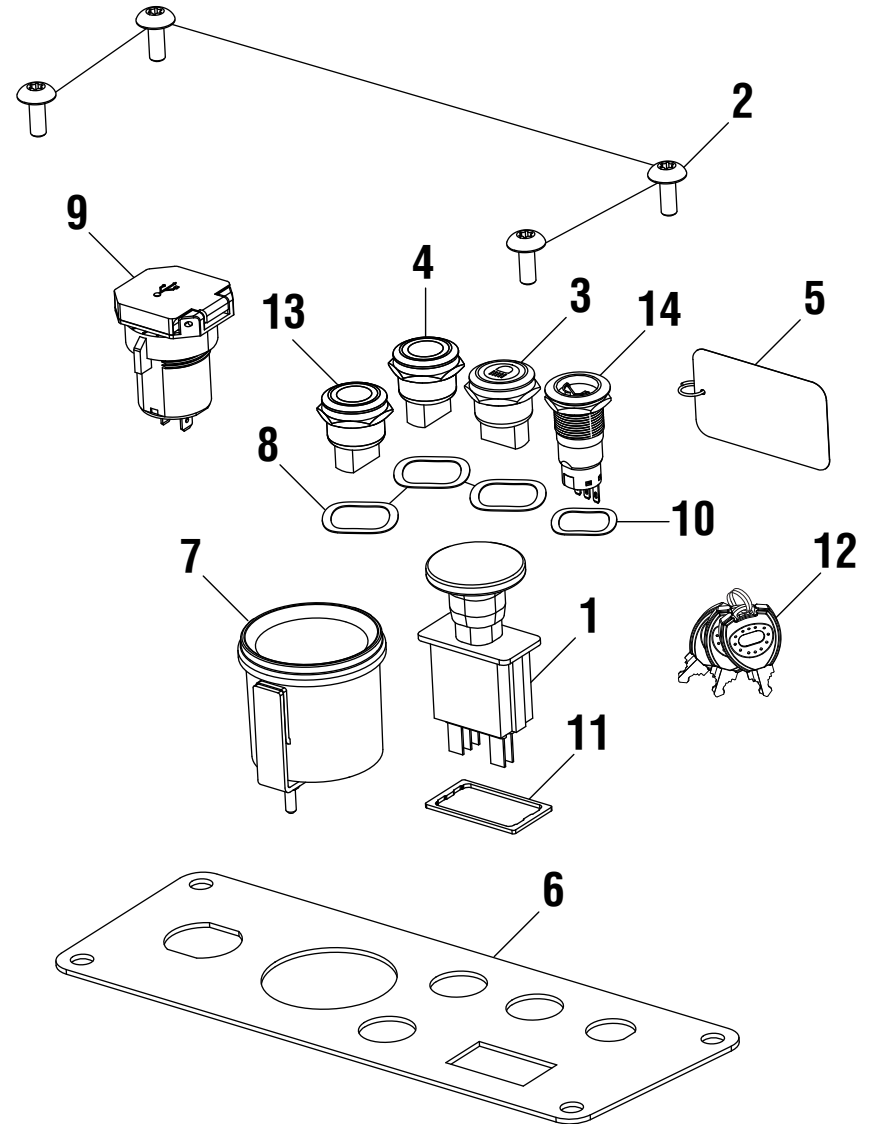


PARTS LIST — FIGURE J

KEY NO.	PART NO.	DESCRIPTION	QTY.
1	997002001	Foot Rest Plate	1
2	994989001	Screw (M6 x 1 x 16, Torx Hd.)	13
3	997001001	Floor Plate	1
4	994957001	Light Assembly, Riding Mower	2
5	997081001	Anti Slip Decal Package	1

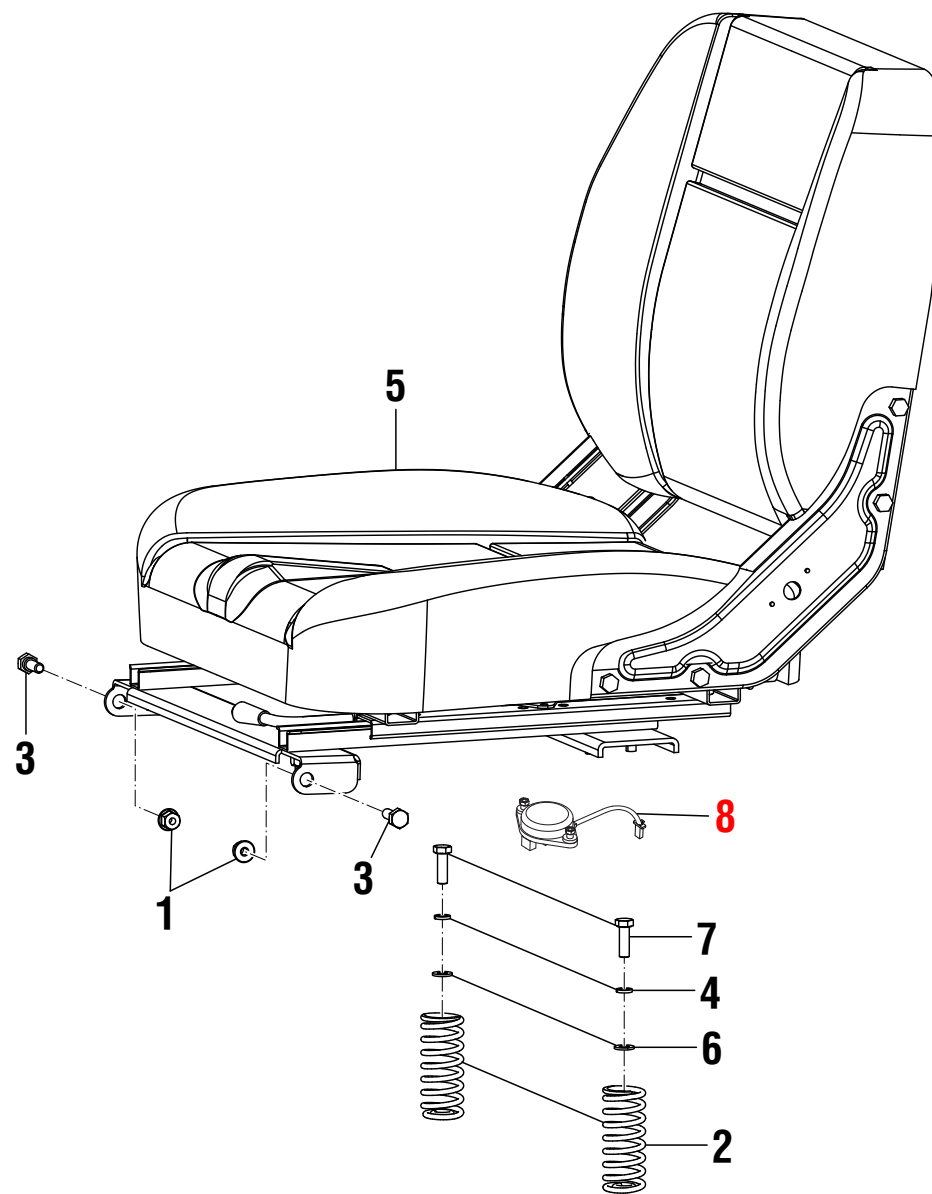
PARTS LIST — FIGURE K

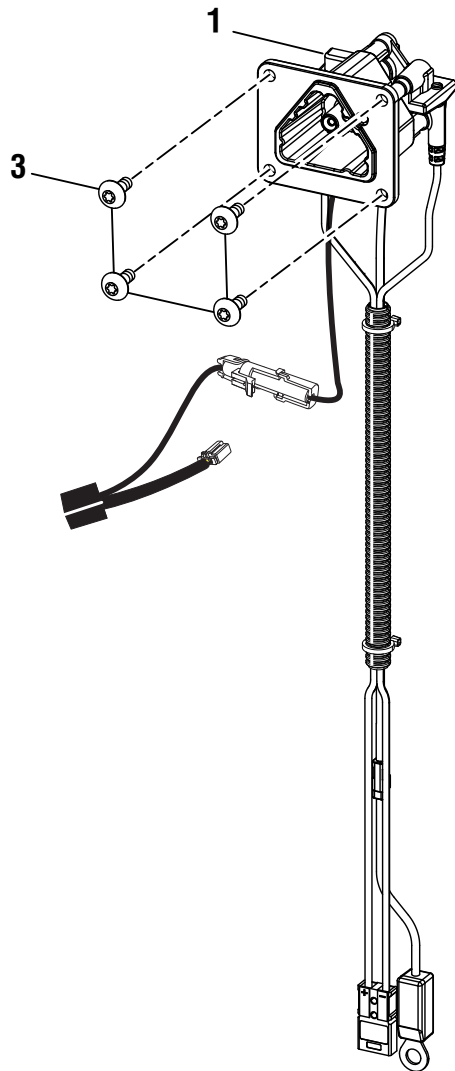
KEY NO.	PART NO.	DESCRIPTION	QTY.
1	994970001	PTO	1
2	994989001	Screw (M6 x 1.00 x 16, Torx Hd.)	4
3	994966001	Light Switch Button	1
4	997080001	Button Switch, Drive Speed	1
5	996288001	Warning Tag	1
6	997071001	Control Panel Face Plate	1
7	997078001	Fuel Gauge, ZTR	1
8	996361001	Spring Washer 2	3
9	994963001	USB Module	1
10	996362001	Spring Washer 3	1
11	997082001	PTO Gasket	1
12	996049001	Key, Riding Mower	1
13	997079001	Button Switch, Blade Speed	1
14	994964001	Key Module	1



PARTS LIST — FIGURE L

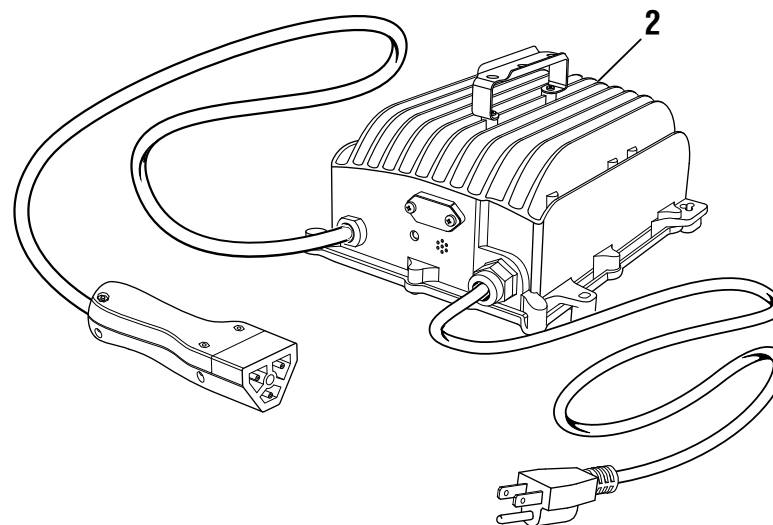
KEY NO.	PART NO.	DESCRIPTION	QTY.
1	994867001	Flange Nut (M8)	2
2	997073001	Seat Spring, ZTR	2
3	994849001	Shoulder Bolt (M8 x 20 x 4)	2
4	994770001	Lock Washer (M8)	2
5	997054001	Seat, ZTR	1
6	994771001	Washer (M8)	2
7	996046001	Bolt (M8 x 25 mm)	2
8	996277001	Seat Switch	1





PARTS LIST — FIGURE M

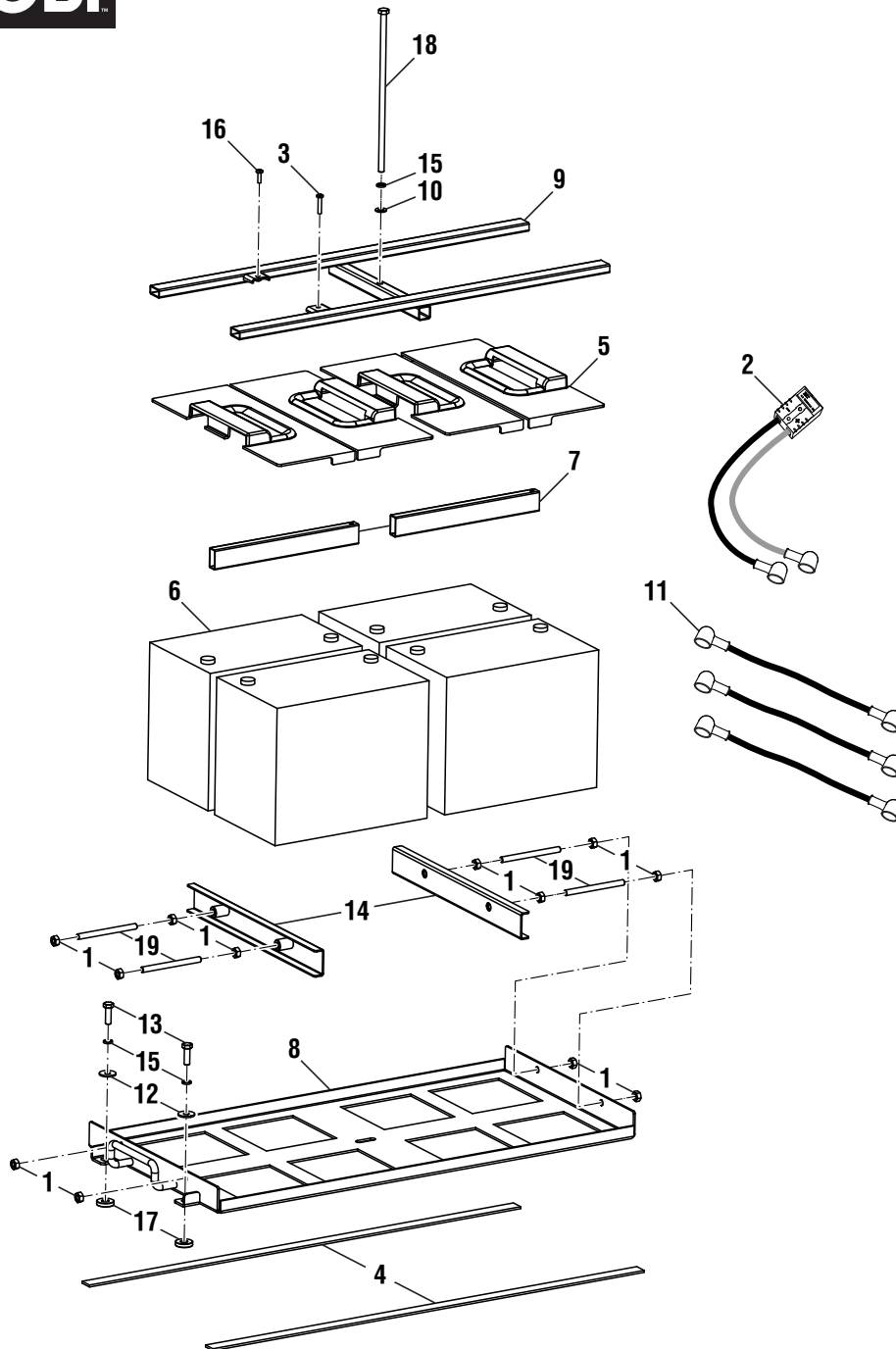
KEY NO.	PART NO.	DESCRIPTION	QTY.
1	996515001	Charger Receptacle 3 Pin With Thermistor	1
2	996514001	American Standard Charger	1
3	994989001	Screw (M6 x 16, Torx Hd.)	4





RY48ZTR75

FIGURE N — BATTERY AND BATTERY TRAY ASSEMBLY



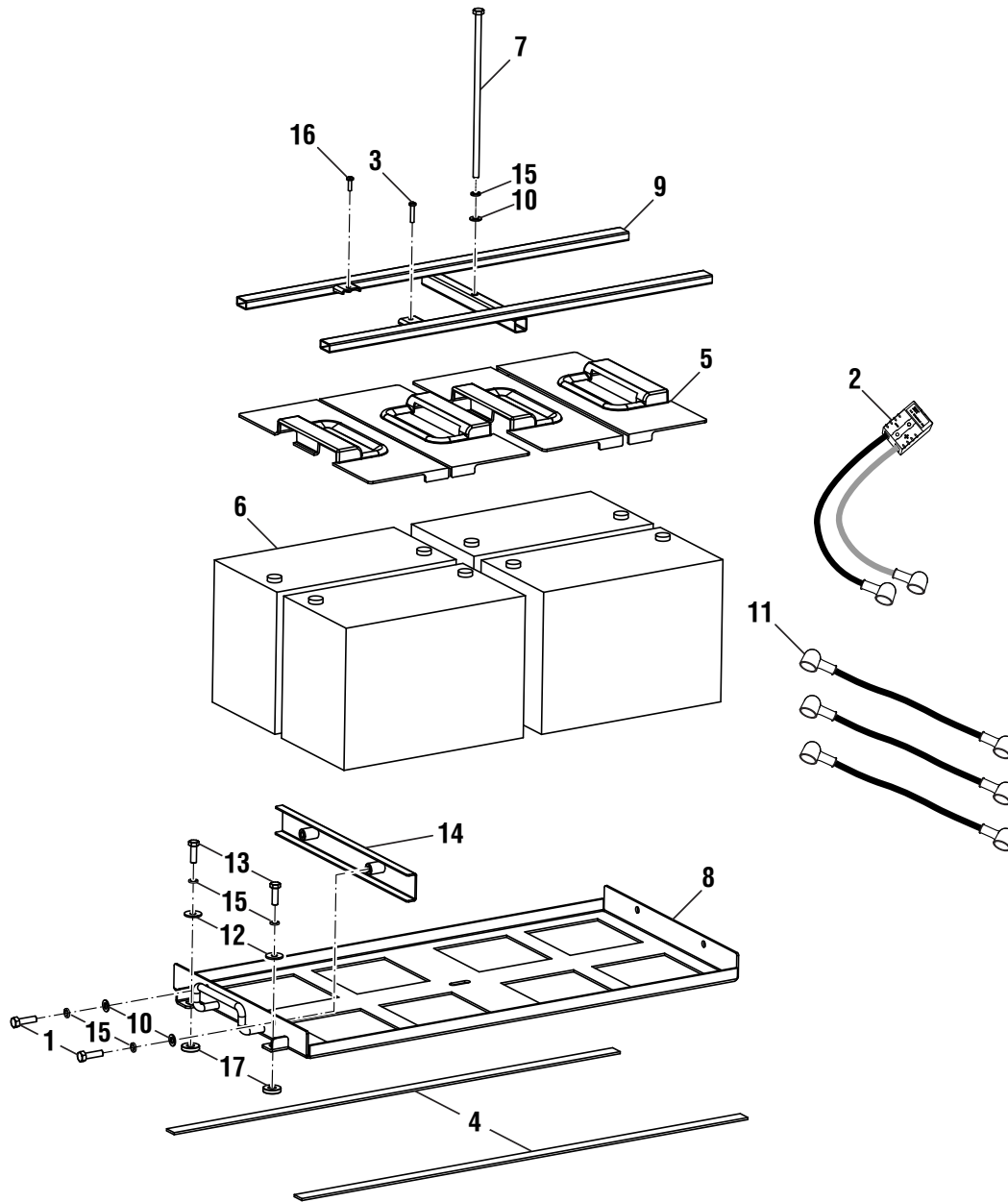
PARTS LIST — FIGURE N

KEY NO.	PART NO.	DESCRIPTION	QTY.
1	996346001	Hex Nut (M8)	12
2	997102001	Battery Cable 2, ZTR	1
3	997133001	Screw (M5 x 25 mm)	1
4	997049001	Battery Tray Slider	2
5	997092001	Battery Shield, ZTR	4
6	996269001	Lpc12-75 Battery	4
7	996363001	Battery Limiter 2	2
8	994923001	Battery Tray, Riding Mower	1
9	997050001	Battery Tie Down	1
10	994771001	Washer (M8)	1
11	996272001	Battery Cable 1	3
12	994827001	Washer (24 x 8)	2
13	996046001	Bolt (M8 x 25 mm)	2
14	996351001	Battery Holder Bracket	2
15	994770001	Lock Washer (M8)	3
16	996213001	Anchor Screw, Bungie, Riding Mower	1
17	996038001	Metal Bushing, Battery Tray	2
18	997096001	Hex Bolt (M8 x 240 mm)	1
19	996350001	Threaded Rod (M8 x 100 mm)	4



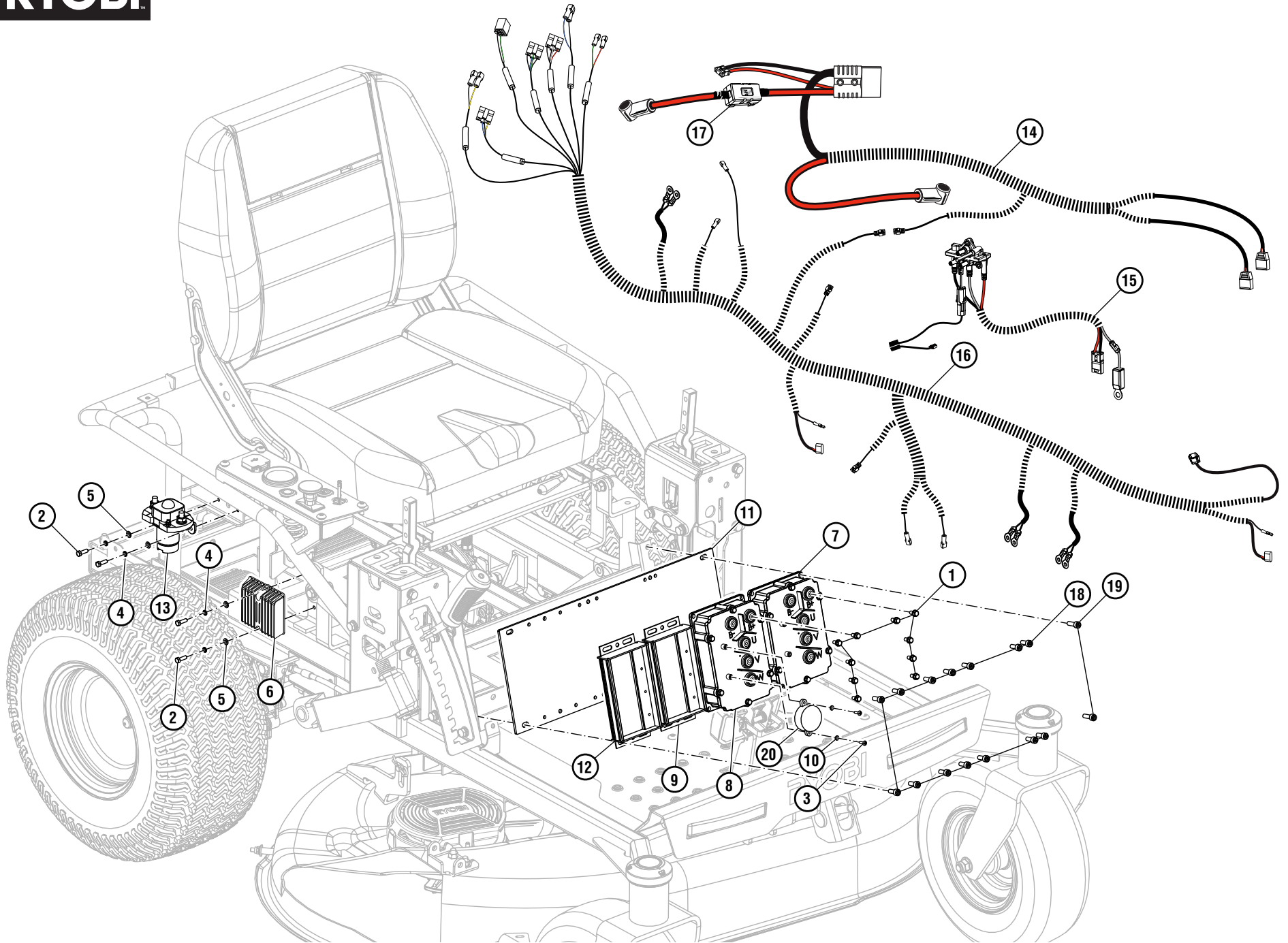
RY48ZTR100

FIGURE 0 — BATTERY AND BATTERY TRAY ASSEMBLY



PARTS LIST — FIGURE 0

KEY NO.	PART NO.	DESCRIPTION	QTY.
1	997142001	Bolt (M8 x 25 mm)	2
2	997102001	Battery Cable 2, ZTR	1
3	997133001	Screw (M5 x 25 mm)	1
4	997049001	Battery Tray Slider	2
5	997092001	Battery Shield, ZTR	4
6	996239001	LPC12-100 Battery	4
7	997096001	Hex Bolt (M8 x 240 mm)	1
8	994923001	Battery Tray, Riding Mower	1
9	997050001	Battery Tie Down	1
10	994771001	Washer (M8)	3
11	996272001	Battery Cable 1	3
12	994827001	Washer (24 x 8)	2
13	996046001	Bolt (M8 x 25 mm)	2
14	996351001	Battery Holder Bracket	1
15	994770001	Lock Washer (M8)	5
16	996213001	Anchor Screw, Bungie, Riding Mower	1
17	996038001	Metal Bushing, Battery Tray	2



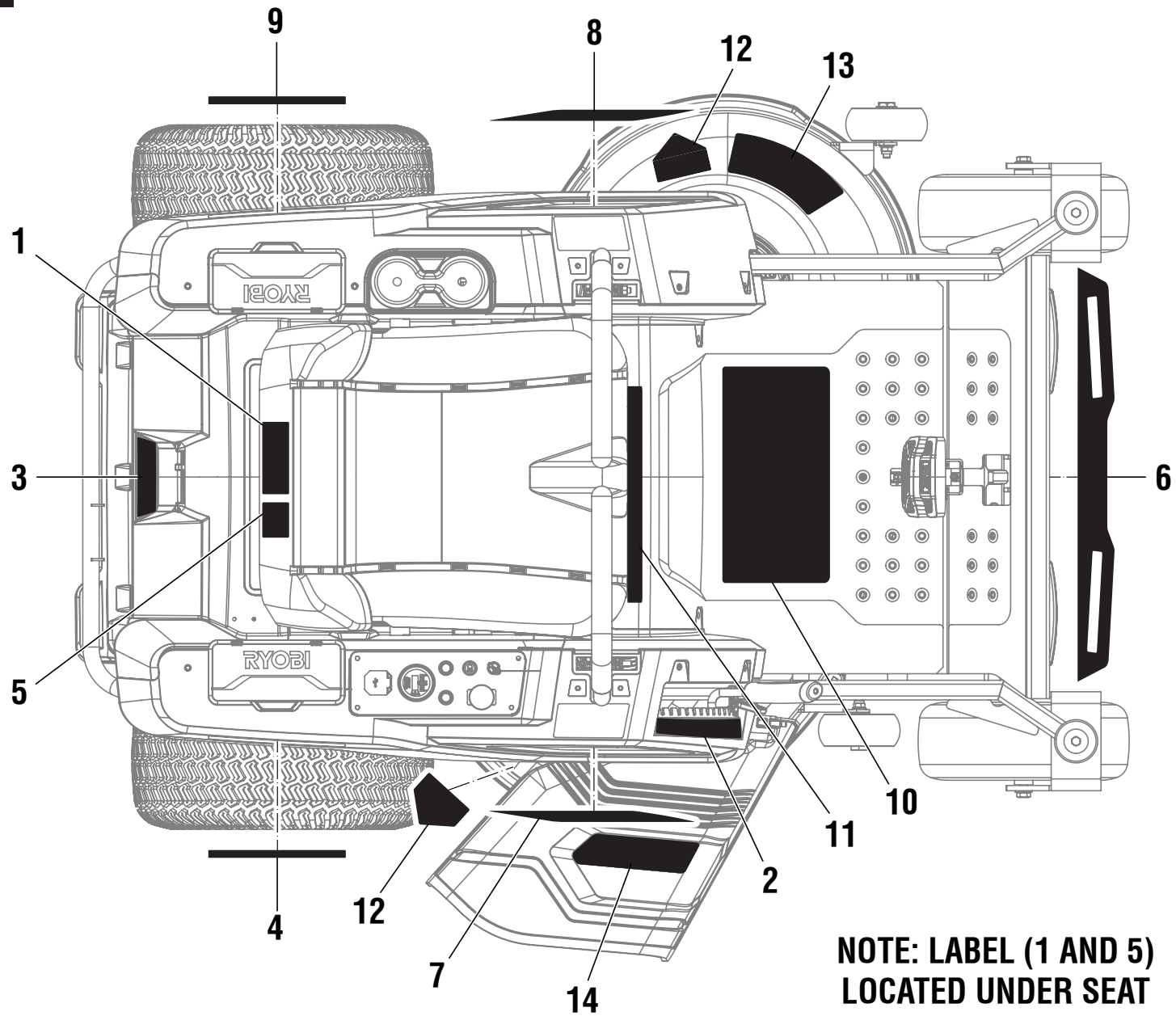


RY48ZTR75/RV48ZTR100

PARTS LIST — FIGURE P

KEY NO.	PART NO.	DESCRIPTION	QTY.
1	997137001	Hex Flange Bolt (M5 x 12 mm)	10
2	996565001	Bolt (M5 x 16 mm, Hex Hd.)	4
3	997094001	Screw (M3 x 12 mm, Pan Hd.)	2
4	996286001	Lock Spring Washer (5 mm)	4
5	996295001	Washer (5.3 x 12 x 1t)	4
6	997077001	DC to DC Converter, ZTR	1
7	997057001	Drive Motor Controller, Slave, ZTR	1
8	997056001	Drive Motor Controller, Master, ZTR	1
9	997058001	Deck Motor Controller, Master, ZTR	1
10	996035001	Flat Washer (M3)	2

KEY NO.	PART NO.	DESCRIPTION	QTY.
11	997055001	Controller Mounting Plate	1
12	997059001	Deck Motor Controller, Slave, ZTR	1
13	994993001	Main Relay	1
14	997091001	Battery Output Cable	1
15	997103001	Charging Controller, ZTR	1
16	997090001	Main Wiring Harness	1
17	997147001	Fuse, 125 Amp	1
18	997098001	Screw (M6 x 16 mm, Soc. Hd.)	14
19	997148001	Screw (M6 x 20 mm, Soc. Hd.)	2
20	997149001	Beeper, ZTR	1



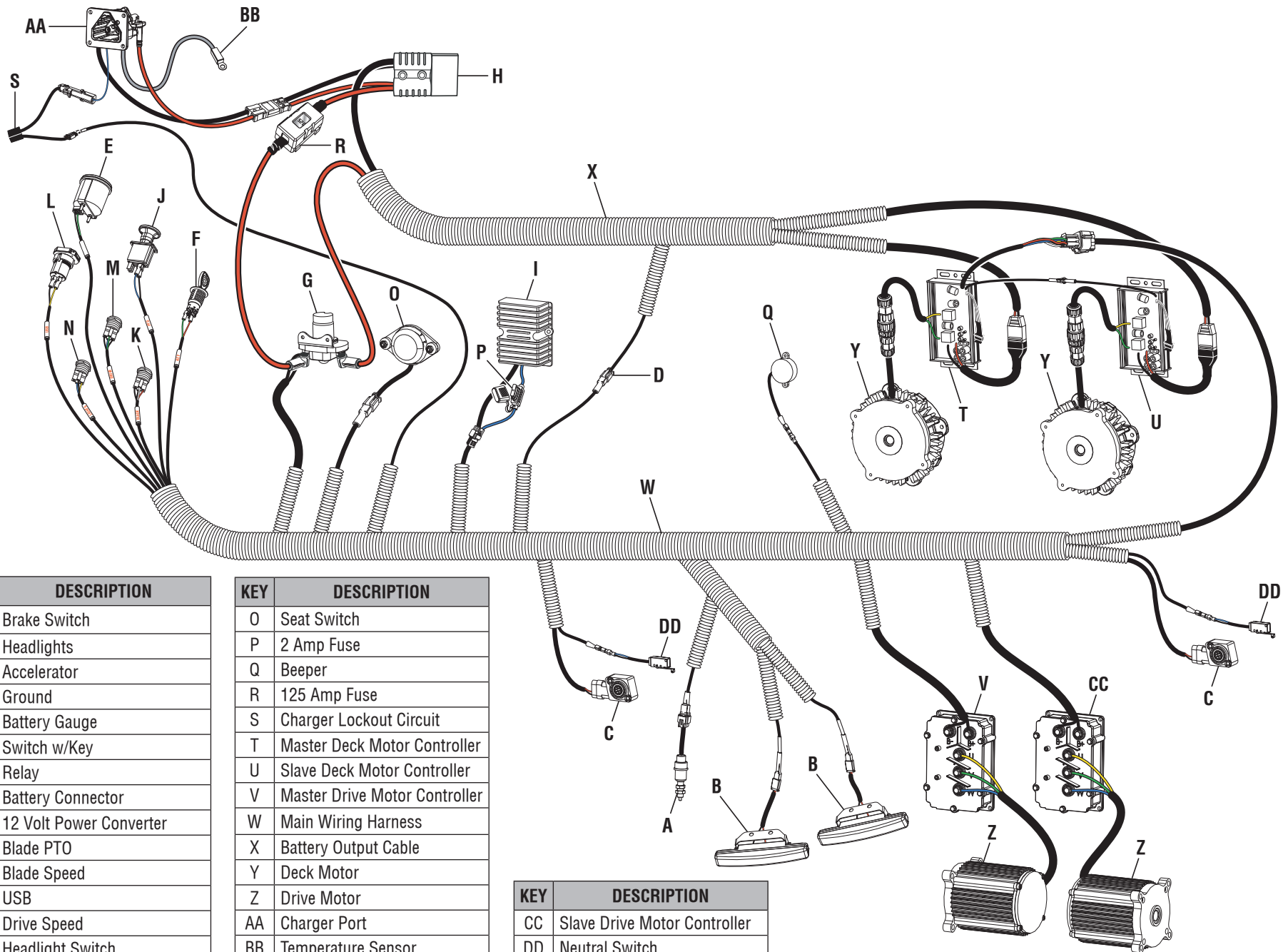


RY48ZTR75/R48ZTR100

PARTS LIST — FIGURE Q

KEY NO.	PART NO.	DESCRIPTION	QTY.
1	099749015036	Data Label (RY48ZTR75)	1
	099749015046	Data Label (RY48ZTR100)	1
2	099749015045	Deck Lift Label	1
3	099749015047	Charging Port Label, English	1
	099749015048	Charging Port Label, Spanish	1
4	099749015039	Subbrand Label, Right (RY48ZTR75)	1
	099749016001	Subbrand Label, Right (RY48ZTR100)	1
5	099749015049	RPL Label, English	1
	099749015050	RPL Label, Spanish	1
6	099749015060	RYOBI Label, Front	1
7	099749015061	RYOBI Logo, Right	1
8	099749015062	RYOBI Label, Left	1

KEY NO.	PART NO.	DESCRIPTION	QTY.
9	099749015063	Subbrand Label, Left (RY48ZTR75)	1
	099749016002	Subbrand Label, Left (RY48ZTR100)	1
10	099749015064	Floor Danger Label, English	1
	099749015065	Floor Danger Label, Spanish	1
11	099749015068	Instruction Label, English	1
	099749015069	Instruction Label, Spanish	1
12	940851219	No Hands CPSC Danger Label, English	2
	940851226	No Hands CPSC Danger Label, Spanish	2
13	940851207	Deck Danger Label, English	1
14	940851208	Discharge Danger Label, English	1
	940851228	Discharge Danger Label, Spanish	1



KEY	DESCRIPTION
A	Brake Switch
B	Headlights
C	Accelerator
D	Ground
E	Battery Gauge
F	Switch w/Key
G	Relay
H	Battery Connector
I	12 Volt Power Converter
J	Blade PTO
K	Blade Speed
L	USB
M	Drive Speed
N	Headlight Switch

KEY	DESCRIPTION
O	Seat Switch
P	2 Amp Fuse
Q	Beeper
R	125 Amp Fuse
S	Charger Lockout Circuit
T	Master Deck Motor Controller
U	Slave Deck Motor Controller
V	Master Drive Motor Controller
W	Main Wiring Harness
X	Battery Output Cable
Y	Deck Motor
Z	Drive Motor
AA	Charger Port
BB	Temperature Sensor

KEY	DESCRIPTION
CC	Slave Drive Motor Controller
DD	Neutral Switch