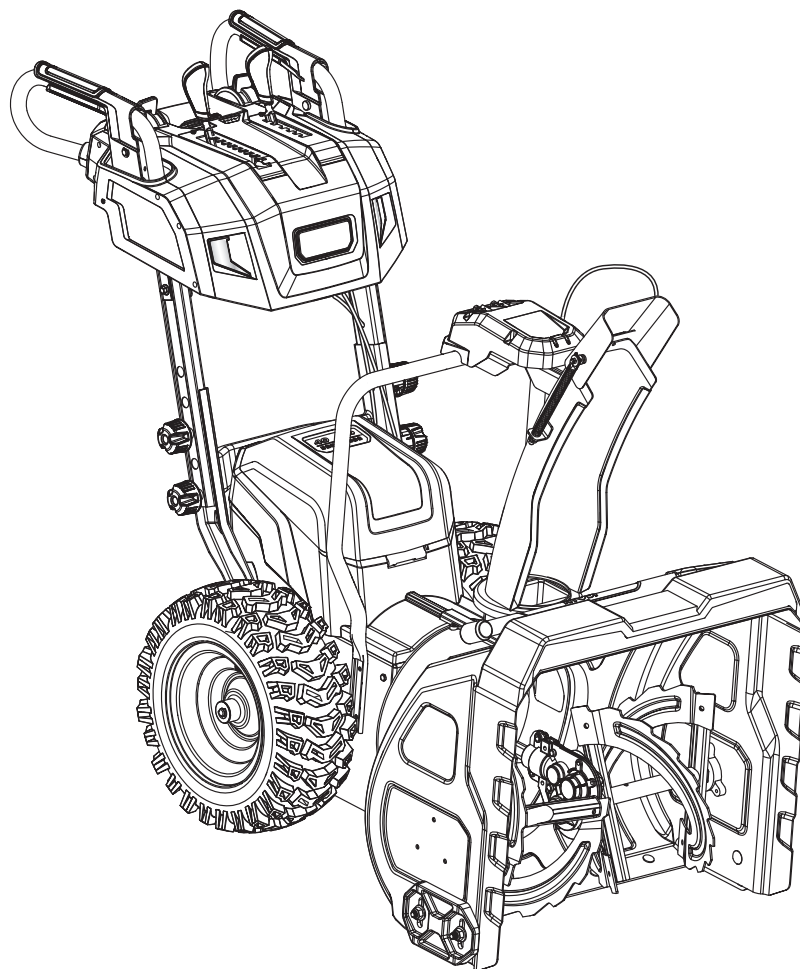


# REPAIR SHEET

BRAND <b>RYOBI</b>		DESCRIPTION <b>40 Volt Brushless Snow Blower</b>
MODEL NO. <b>RY40807</b>	MFG. NO. <b>107612001</b>	

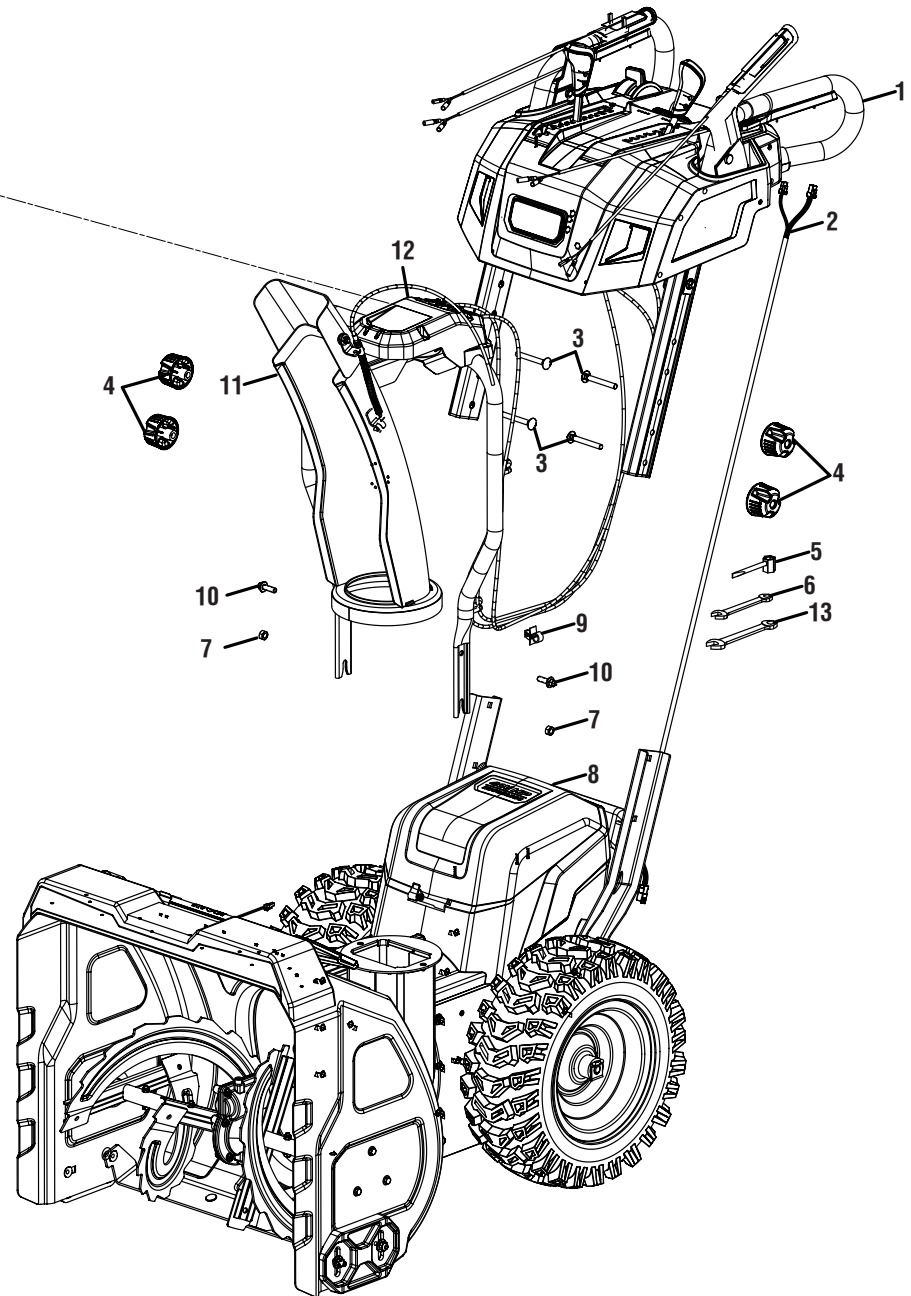
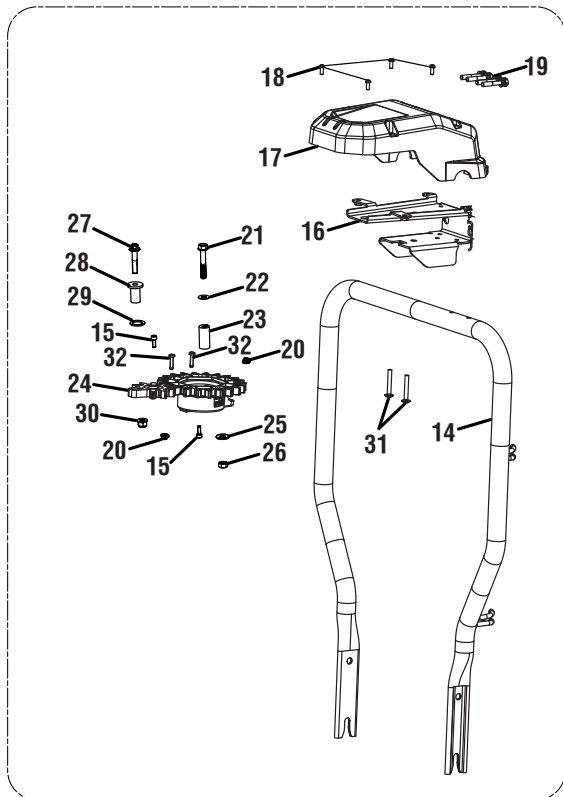


**TTI OUTDOOR POWER EQUIPMENT, INC.**

P.O. Box 1288, Anderson, SC 29622 ■ 1-800-525-2579 ■ [www.ryobitools.com](http://www.ryobitools.com)

2-24-22 (Rev:01)

*The model number and manufacturing location will be found on a label attached to the product. Always mention this information in all communications regarding this product and when ordering parts.*





RY40807

PARTS LIST-FIGURE A

KEY NO.	PART NO.	DESCRIPTION	QTY.
1	318482001	Upper Handle Assembly	1
2	292369001	Electrical Wire Assembly	1
3	661526008	Shoulder Screw (M8 x 65 mm)	4
4	543990001	Knuckle Knob	4
5	612330001	Wrench	1
6	678024001	Open Ended Wrench	1
7	678355002	Hex Nut (M8 x 1.25 mm)	2
8	318474001	Down Body Assembly	1
9	545179001	Line Clamp	1
10	660203091	Screw (M8 x 25 mm)	2
11	318493001	Chute Assembly	1
12	318494001	Deflector Rotation Support Assembly	1
13	674048001	12 mm Wrench	1
14	699636001	Deflector Rotation Support Tube	1
15	661600001	Screw (M5 x 14 mm, T25 Torx Pan Hd.)	2
16	656288001	Chute Rotation Bracket	1
17	544064001	Deflector Gear Cover	1

KEY NO.	PART NO.	DESCRIPTION	QTY.
18	660878001	Screw (M4 x 10 mm, Pan Hd.)	4
19	663095001	Screw w/Spring Washer (M6 x 35 mm)	4
20	678774007	Flange Nut (M5)	2
21	660969001	Screw (M8 x 50 mm)	1
22	639013001	Washer (ID8.4 x OD18 x 1t)	1
23	544748001	Pivot Spacer	1
24	205955001	Cable Drum Assembly	1
25	636233001	Washer (ID8.5 x 20.5 x 2t)	1
26	678355002	Nut (M8 x 1.25)	1
27	660764002	Screw (M8 x 40 mm)	1
28	544747001	Pivot	1
29	636793001	Washer (ID17.5 x OD24 x 1.5 mm)	1
30	678774002	Lock Nut (M8x1.25)	1
31	662466005	Screw (M5 x 35 mm, T25 Torx Pan Hd.)	2
32	660466001	Screw (M4 x 18 mm, T20 Torx Pan Hd.)	2
	<b>Not Shown:</b>		
	998000677	Operator's Manual	







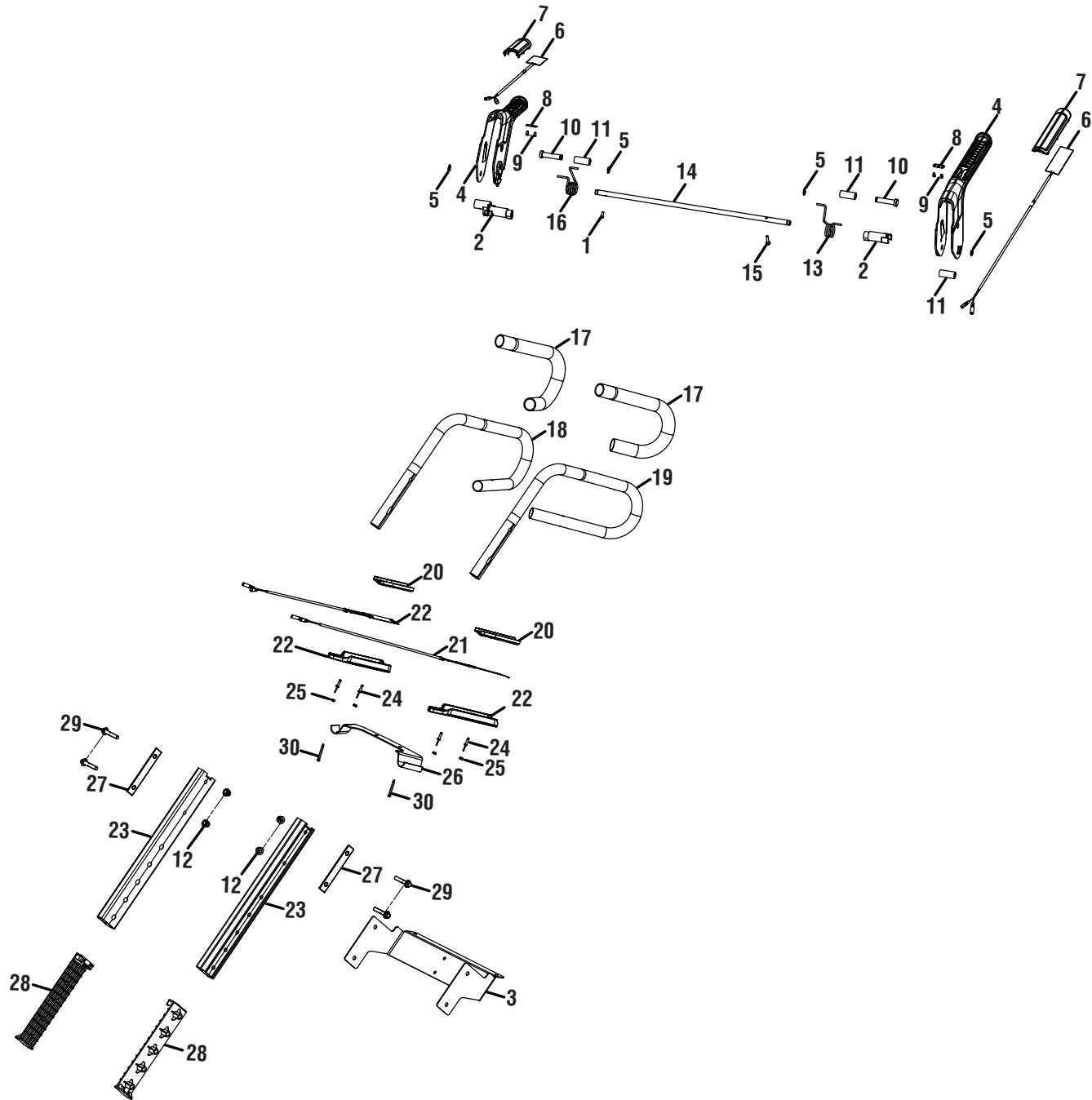
**RY40807**

**PARTS LIST-FIGURE B**

KEY NO.	PART NO.	DESCRIPTION	QTY.
1	318491001	Upper Handle Control Plate Assembly	1
2	513211001	Cord Clip	4
3	660608001	Screw (M4 x 12 mm, T20 Torx Pan Hd.)	8
4	318235001	Light Bar Assembly (Right - See Note)	1
5	318240001	Light Bar Assembly (Left- See Note)	1
6	205929002	Paddle Interlock Master Assembly	1
7	656264001	Interlock Spring	1
8	205941001	Control Panel Side Cover	2
9	318490001	Handle Bracket Assembly	1
10	660481005	Screw (M4 x 14 mm)	6
11	639013001	Washer (ID 8.4 x OD18 x 1t)	1
12	544070001	Control Panel Base	1
13	660466001	Screw (M4 x 18 mm, Double Thread T20 Torx Pan Hd.)	54
14	660004019	Screw (M4 x 12 mm)	4
15	205964001	Height Adjustment Assembly	4
16	662083002	Screw (M4 x 12 mm, T20 Torx Pan Hd.)	2
17	318489001	Upper Deflector Adjust Assembly	1
18	318487001	Upper Chute Control Assembly	1
19	678460002	Nylon Lock Nut M6	2
20	683157001	Cable Drum Spring	2
21	656404001	Spring Clamp	1
22	205966001	Control Panel Cover with Labels	1
23	656255001	Chute Rotation Lock Plate	1
24	656254001	Deflector Height Adjust Lock Plate	1
25	318492001	Speed Control Paddle Bottom Assembly	2
26	205952001	Speed Control Paddle Bottom Assembly (Inc Key Nos. 25 & 32)	2

KEY NO.	PART NO.	DESCRIPTION	QTY.
27	622961001	Bolt (M5)	1
28	544076001	Safety Button	1
29	699893001	Safety Button Spring	1
30	690969001	Washer (ID4.2 x OD10 x 1t)	3
31	205967001	Control Panel Switch with Labels	1
32	660203001	Screw (M3 x 8 mm)	2
33	760746001	Micro Switch	3
34	281296001	Control Board, Battery And Display Assembly	1
35	281300001	Control Board Assembly	1
36	660203001	Screw (M4 x 8 mm)	4
37	544779001	Upper Handle Mounting Bracket	1
38	678774007	Flange Nut (M5)	1
39	205948001	Drum Assembly	1
40	622532002	Hinge Shaft	1
41	678353001	E-Ring	1
42	699712001	Chute Rotation Lever Torsion Spring	1
43	674299001	Bar Adjust	1
44	660466001	Screw (M4 x 18 mm, T20 Torx Pan Hd. Double Thread)	6
45	205947001	Upper Chute Rotation Assembly	1
46	539294001	Cable Tension Sleeve	2
47	292366001	Control Cable	1
48	537899001	Upper Cable Drum	1
49	660481027	Screw (M4 x 12mm, Pan Hd.)	3
50	656261001	Chute Adjust Support Bracket	1
51	678344002	Locking Nut (M4)	3

**NOTE-Keys 4 And 5 Must Be Ordered Together**



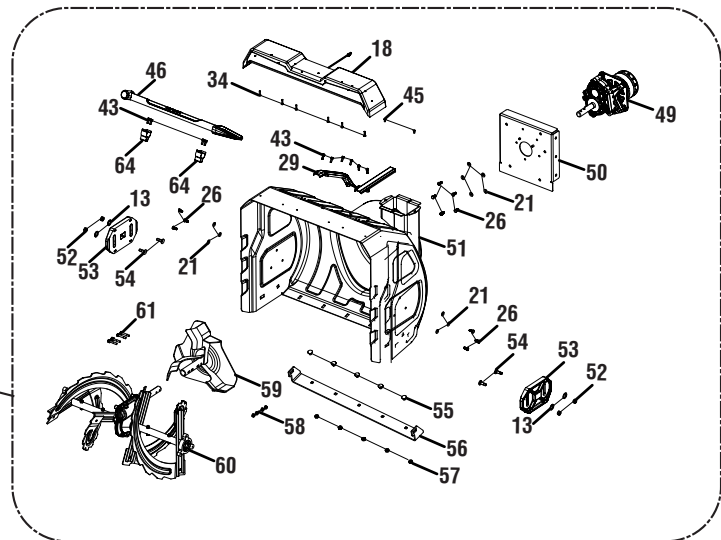
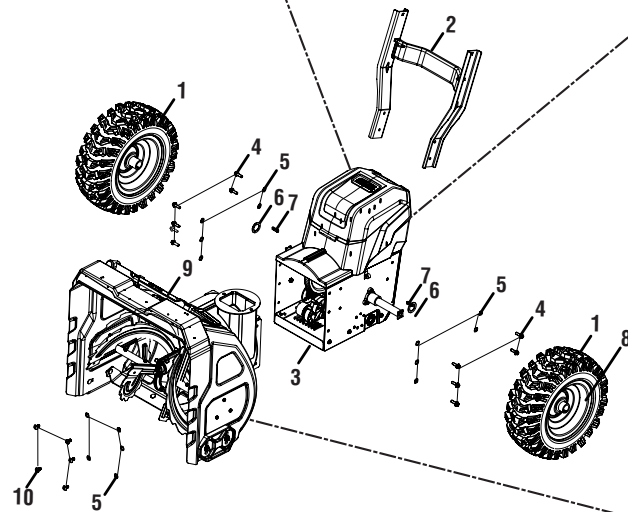
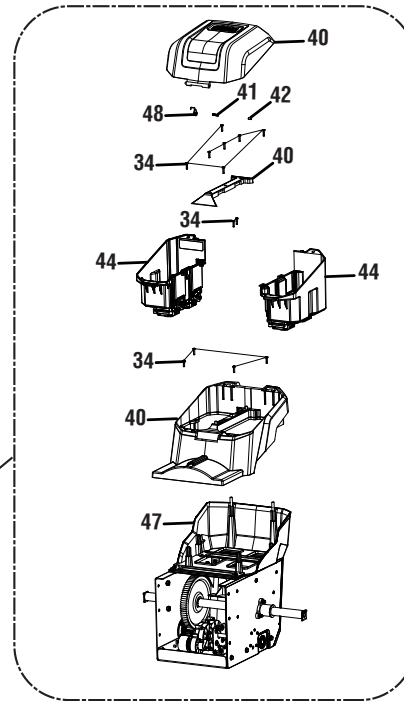
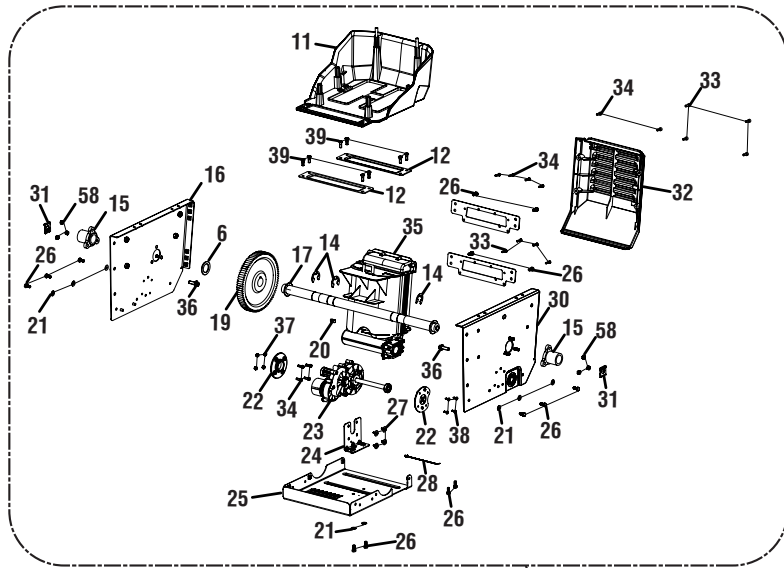


**RY40807**

**PARTS LIST-FIGURE C**

KEY NO.	PART NO.	DESCRIPTION	QTY.
1	660878001	Screw (M4 x 10 mm, Pan Hd.)	1
2	205949001	Rod Assembly	2
3	656260001	Console Support Bracket	1
4	205953001	Action Handle Paddle Assembly	2
5	679044001	E-Ring	4
6	890073002	Heating Grip	2
7	545034001	Heated Grip Snap Cover	2
8	656506001	Plate	2
9	662107001	Screw (M4 x 6 mm, T10 Torx Pan Hd.)	4
10	622960001	Paddle Stoper Pin	2
11	545358001	Bushing	3
12	678774002	Nut (M8 x 1.25 mm)	4
13	699817001	Drive Paddle Torsion Spring	1
14	699816001	Paddle Rod Grip	1
15	662395001	Screw (M4 x 19 mm, T25 Torx Pan Hd.)	1

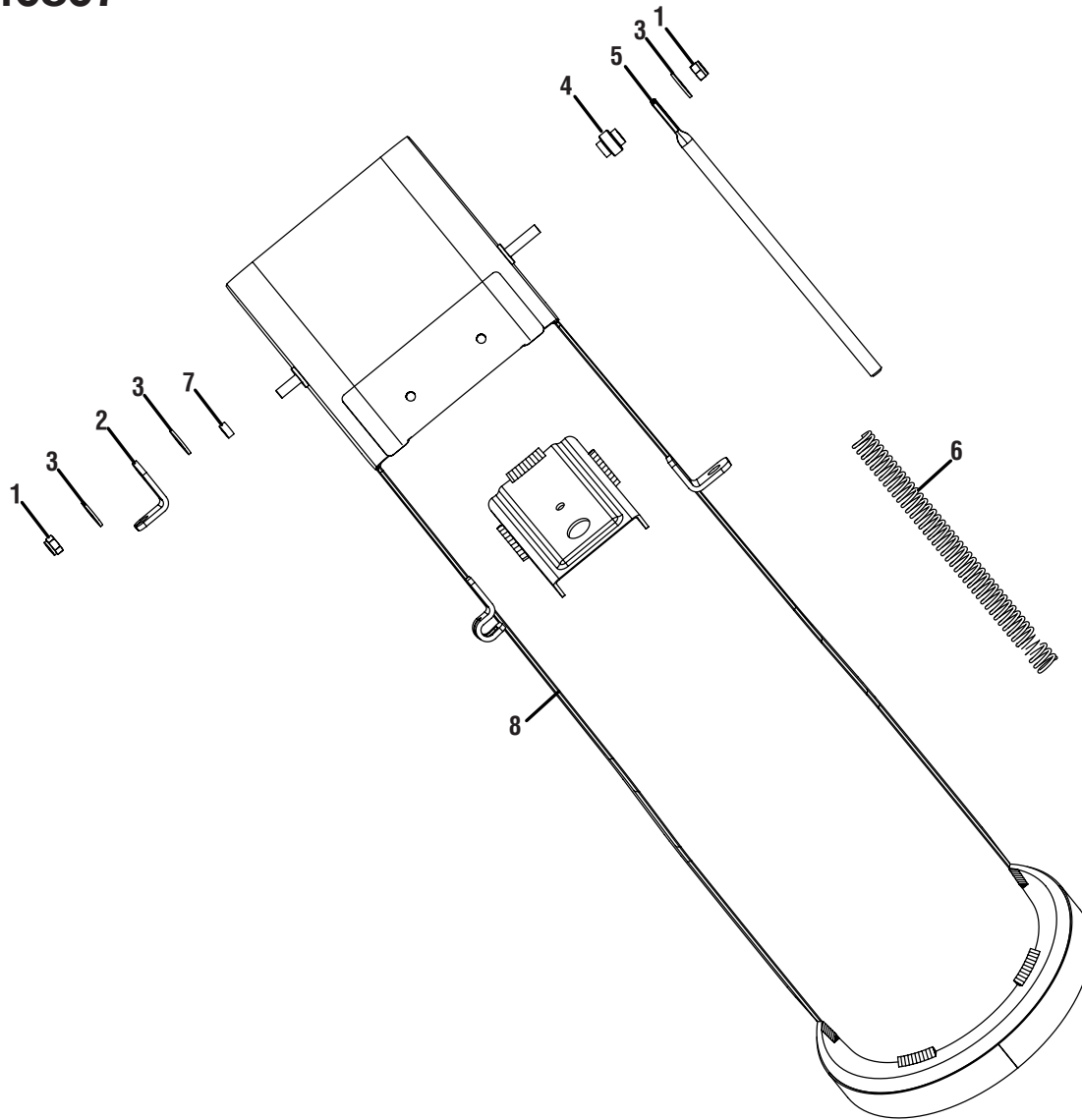
KEY NO.	PART NO.	DESCRIPTION	QTY.
16	699818001	Drive Paddle Torsion Spring	1
17	566546001	Foam Tube	2
18	699642001	Handle (Right)	1
19	699641001	Handle (Left)	1
20	545126001	Lower Heated Grip	2
21	890073003	Heating Grips	1
22	205963001	Lower Heated Grip Assembly	2
23	699639001	Upper Handle Support Tube	2
24	678002002	Rivet	4
25	566554001	Seal	4
26	656263001	Upper Handle Support	1
27	656258001	Handle Reinforcement Plate	2
28	205962001	Internal Bushing And Top Cover For Tube Assembly	2
29	661505004	Screw (M8 x 45 mm)	4
30	660026007	Screw (M4 x 38 mm)	2



**RY40807****PARTS LIST-FIGURE D**

KEY NO.	PART NO.	DESCRIPTION	QTY.
1	318384001	16 in. Tire Wheel Assembly	1
2	699638001	Handle Level Adjustment	1
3	318476001	Battery Box Assembly	1
4	660203091	Screw (M8 x 25 mm)	10
5	638909005	Wave Washer (OD17.5 x ID13.3 x 1.5 t)	15
6	692019001	Washer (OD1.031 x ID1.57 x 0.60t)	3
7	674337001	Key	2
8	317954001	16 in. Pneumatic Wheel	1
9	318475001	Lower Deck Assembly	1
10	662160001	Screw W/Shoulder (M8 x 16 mm, T40 Torx Pan Hd.)	5
11	544065001	Battery Box Base	1
12	656086001	Cross Strut	2
13	678126005	Washer (ID9.8 x OD30 x 3t)	4
14	656352001	E Ring	3
15	615154001	Axle Bushing	2
16	656085001	Side Panel (Right)	1
17	622962002	Axle	1
18	318252001	Led Light Bar	1
19	615300001	Big Output Gear	1
20	674401001	Key	1
21	638557001	Washer (OD15 x ID6.2 x 0.8t)	19
22	205957001	Bearing Support Assembly	1
23	318391001	Gear Box Assembly	1
24	656257001	Transmission Bracket	1
25	656088001	Bottom Panel	1
26	660481005	Screw (M6 x 14 mm)	27
27	662199001	Screw (M4 x 10 mm, T15 Torx Pan Hd.)	4
28	790062001	Clip	1
29	205950001	Wire Cover Assembly	1
30	656084001	Side Panel (Left)	1
31	656444001	Spring Plate Fastener	2

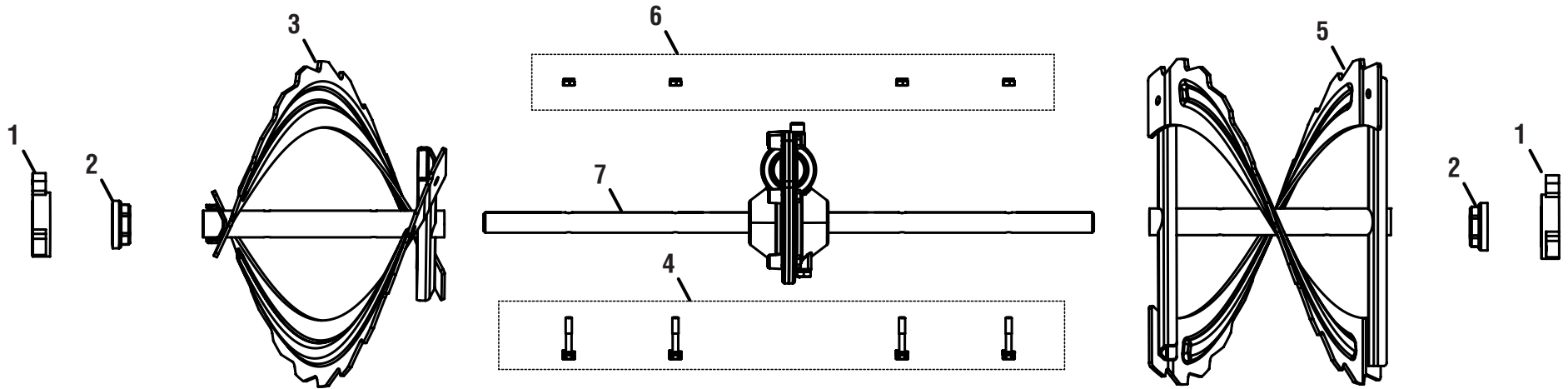
KEY NO.	PART NO.	DESCRIPTION	QTY.
32	544711001	Black Panel	1
33	661600001	Screw (M5 x 14 mm, T25 Torx Pan Hd.)	8
34	660466001	Screw (M4 x 18 mm, T20 Torx Pan Hd.)	29
35	318478001	Heat Sink Assembly	1
36	660203091	Screw (M8 x 25 mm)	2
37	670974003	Nut (M5)	4
38	660608001	Screw (M4 x 12 mm, T20 Torx Pan Hd.)	4
39	660722001	Screw (M6 x 17 mm)	8
40	205960001	Battery Cover Assembly	1
41	679073001	Battery Door Spring	1
42	621628001	Battery Door Axle	1
43	660901001	Screw (M5 x 14 mm, Pan Hd.)	10
44	205959001	Battery Box Assembly Assembly (See Fig. G)	2
45	662746002	Screw (M4 x 10 mm, Pan Hd.)	2
46	544062001	Snow Shovel	1
47	318477001	Chassis Assembly	1
48	679074006	Battery Door Torsion Spring	1
49	220757001	Gearbox Assembly	1
50	656087001	Adaptor Bracket	1
51	205968001	Deck w/Labels	1
52	631633001	Nut (M8 x 6.5 mm)	4
53	543863001	Skid Shoe	2
54	661096001	Screw (M8 x 23 mm)	4
55	662383003	Screw (M8 x 11 mm)	5
56	656090001	Scraper Blade	1
57	662828001	Nut (M8 x 4 mm)	5
58	678460002	Lock Nut (M6)	10
59	318027001	Impeller Welded Assembly	1
60	318382001	Scraper Assembly	1
61	663095001	Screw w/Spring Washer (M6 x 35 mm)	4



**PARTS LIST-FIGURE E**

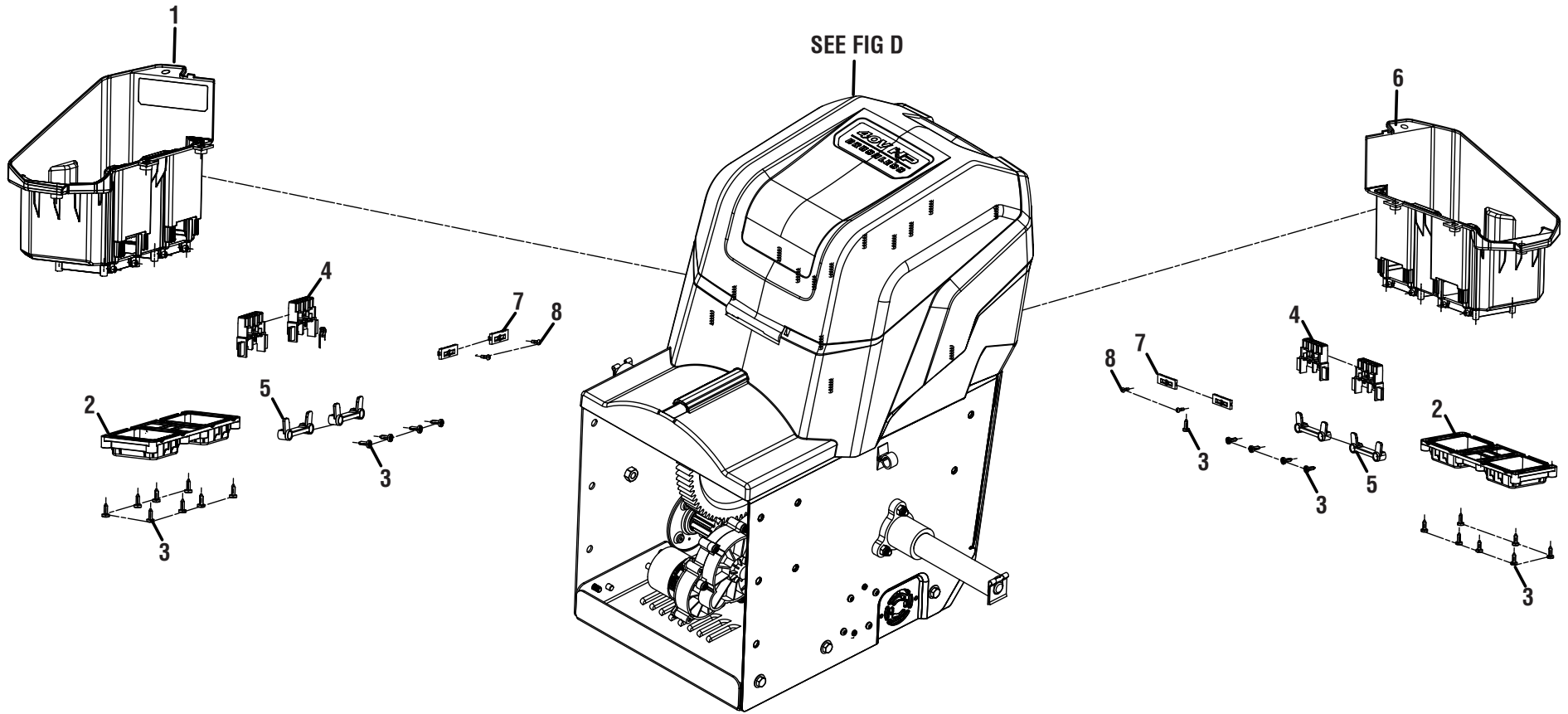
KEY NO.	PART NO.	DESCRIPTION	QTY.
1	678460002	Lock Nut (M6)	2
2	656276001	Bracket Deflector	1
3	638128018	Washer (ID18 x OD6.5 x 1.5t)	3
4	205951001	Deflector Spring Spacer Bushing	1

KEY NO.	PART NO.	DESCRIPTION	QTY.
5	656277001	Deflector Spring Guide	1
6	699813001	Deflector Spring	1
7	544764001	Deflector Bushing	1
8	205965001	Chute w/Label	1



**PARTS LIST-FIGURE F**

KEY NO.	PART NO.	DESCRIPTION	QTY.
1	615153001	Auger Bearing Retainer Plate	2
2	544771001	Auger Bushing	2
3	682574001	Auger Blade (Right)	1
4	663095001	Screw w/Spring Washer (M6 x 35 mm)	4
5	682573001	Auger Blade (Left)	1
6	678460002	Lock Nut (M6)	4
7	220771001	Attached Auger Worm Gearbox Assembly	1



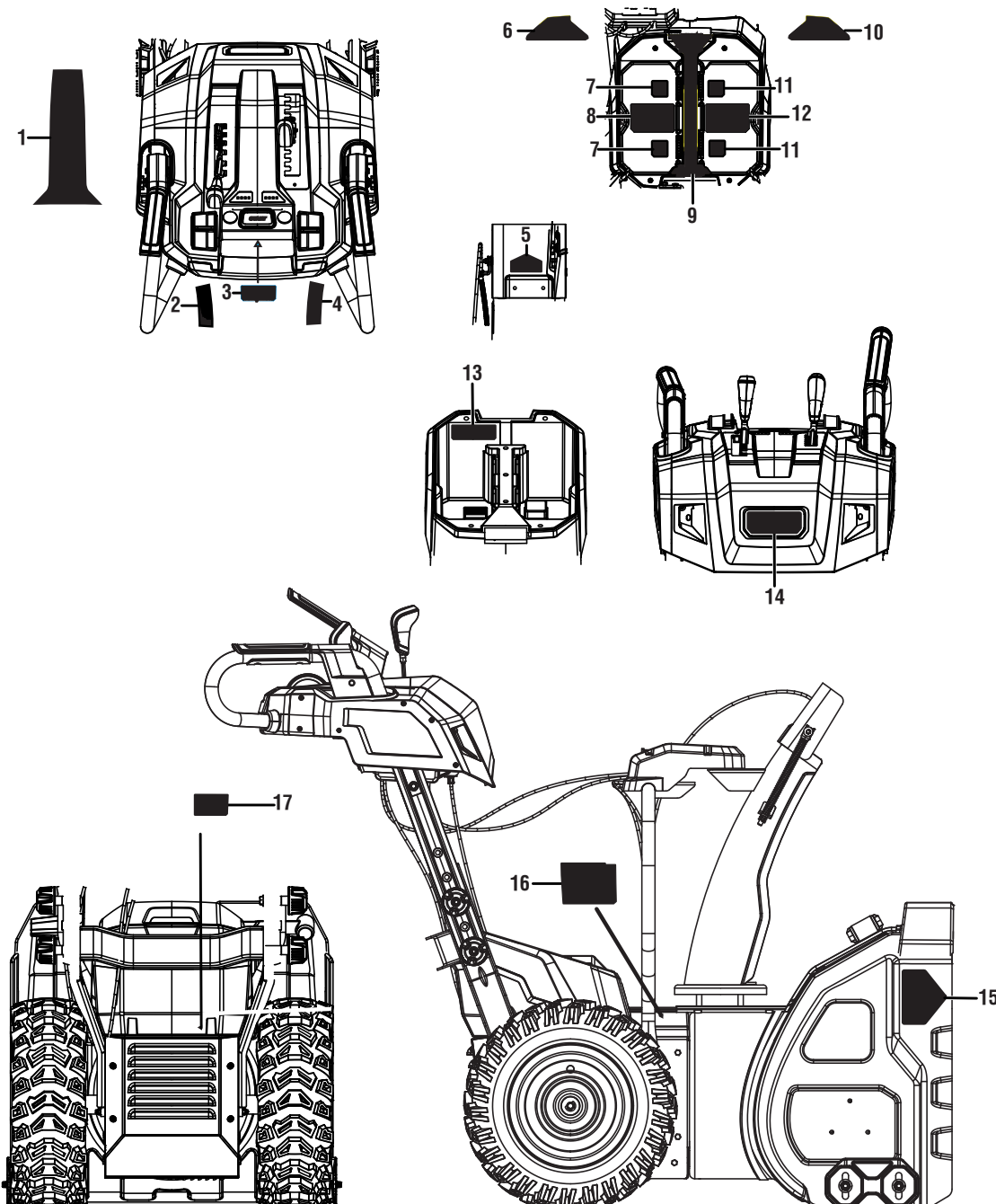
**PARTS LIST-FIGURE G**

KEY NO.	PART NO.	DESCRIPTION	QTY.
1	318480001	Battery Box Assembly (Left, Key 45 On Pg. 8)	1
2	537745001	Battery Ejector Retainer	2
3	660608001	Screw (M4 x 12 mm, T20 Torx Pan Hd.)	24
4	525692001	Battery Contact Holder	4

KEY NO.	PART NO.	DESCRIPTION	QTY.
5	529299001	Terminal Holder Pressing Plate	4
6	318481001	Battery Box Assembly (Right, Key 45 On Pg. 8)	1
7	525651001	Battery Cover Connector	4
8	660203001	Screw (M3 x 8 mm, Pan Hd.)	4

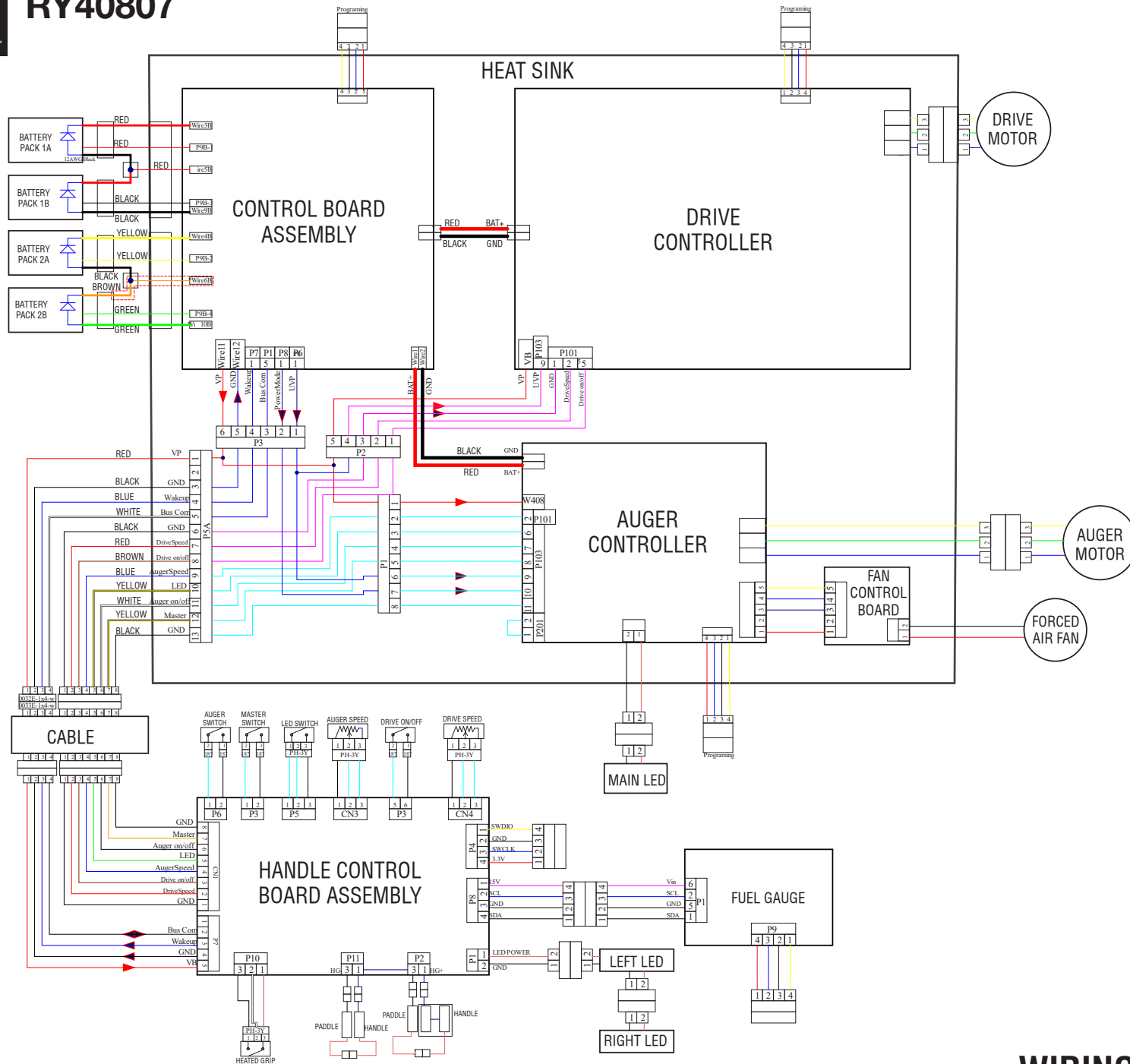
**NOTE-Keys 1 And 6 Must Be Ordered Together**





## PARTS LIST

KEY NO.	PART NO.	DESCRIPTION	QTY.
1	940779434	Handle Controls / Fuel Gauge	1
2	940779433	Drive Speed Label	1
3	940779437	Starting Instructions	1
4	940779426	Auger Speed Label	1
5	941588400	Chute Icon Label	1
6	940779427	Battery Icon (Left)	1
7	940779429	A Label	2
8	940779431	A Min Battery Label	1
9	940779435	Qr Code / Center Label	1
10	940779428	Battery Icon (Right)	1
11	940779430	B Label	2
12	940779432	B Min Battery Label	1
13	941263003	Battery Notice	1
14	940779436	Ryobi 40v Hp Label	1
15	941641001	Cpsc Cut Finger	1
16	940779425	Icon / Danger / Caution Label	1
17	941588992	Data Label	1



### WIRING DIAGRAM