

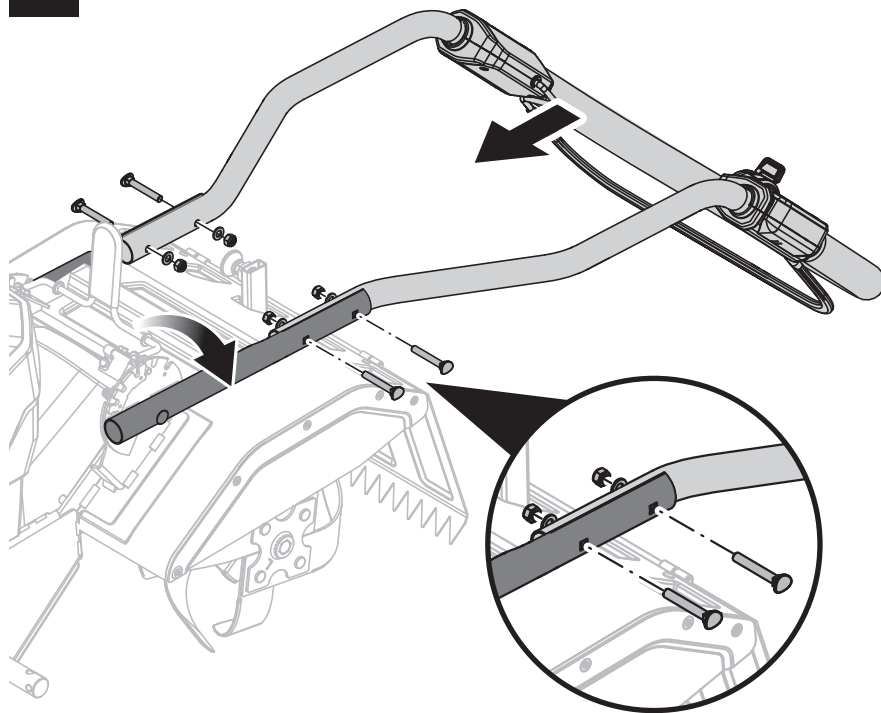


WARNING:

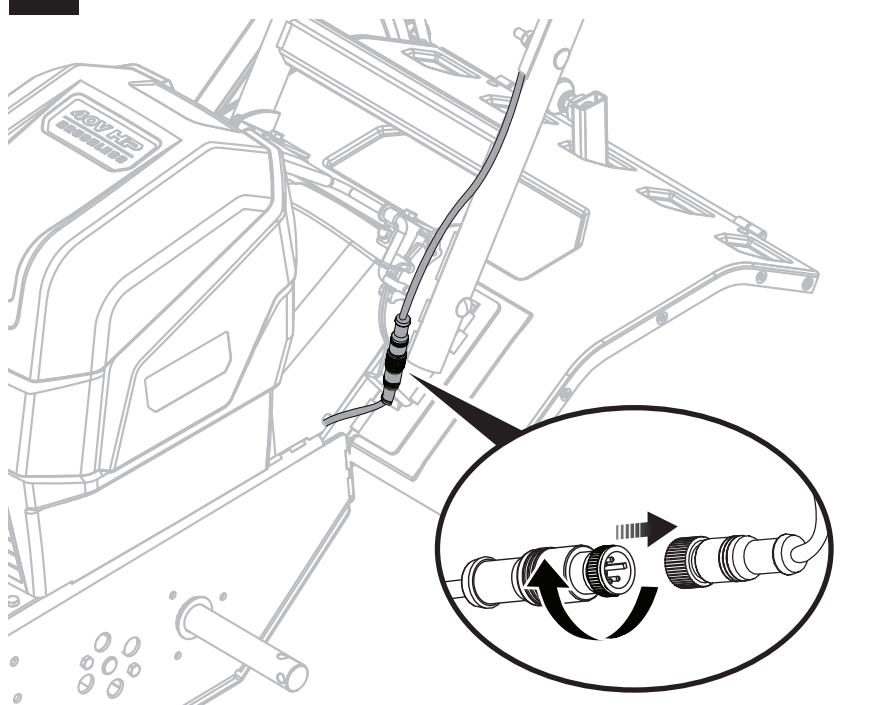
This Quick Reference Guide is not a substitute for reading the operator's manual. To reduce the risk of injury or death, user must read and understand operator's manual before using this product. All page references refer to the operator's manual.

FIRST TIME ASSEMBLY

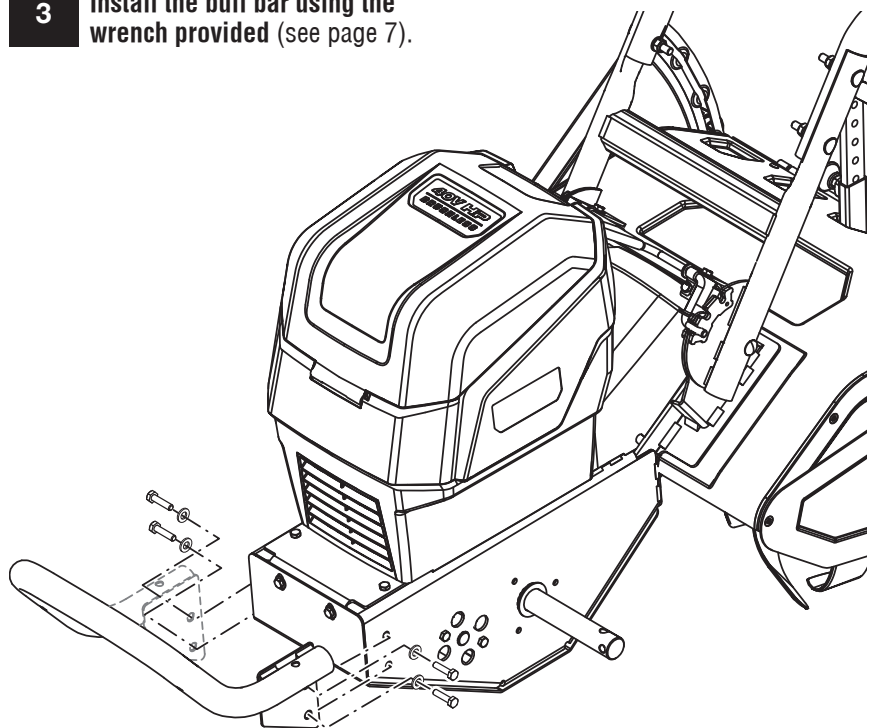
1 Install the handle (see page 7).



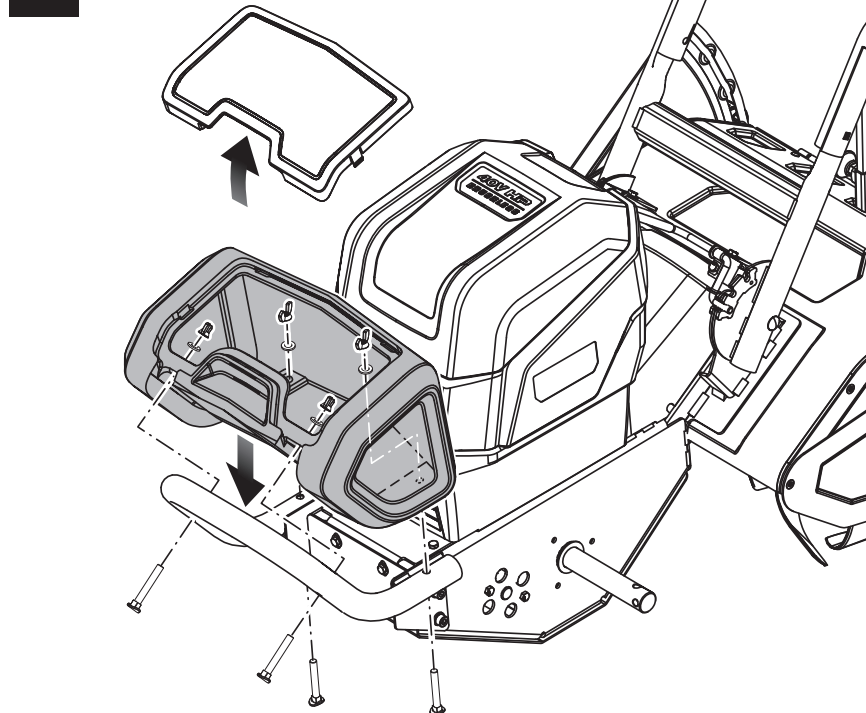
2 Connect wire assembly (see page 7).



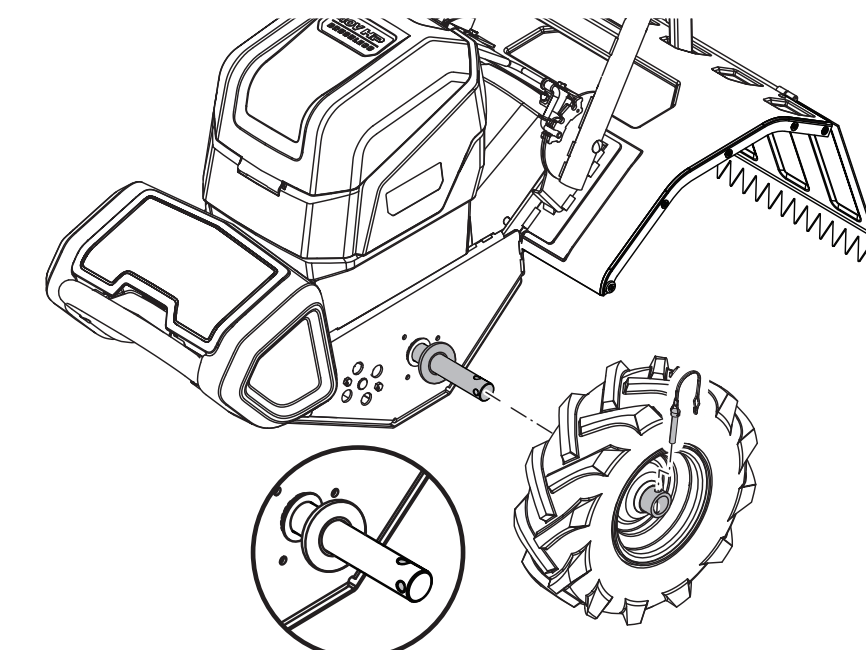
3 Install the bull bar using the wrench provided (see page 7).



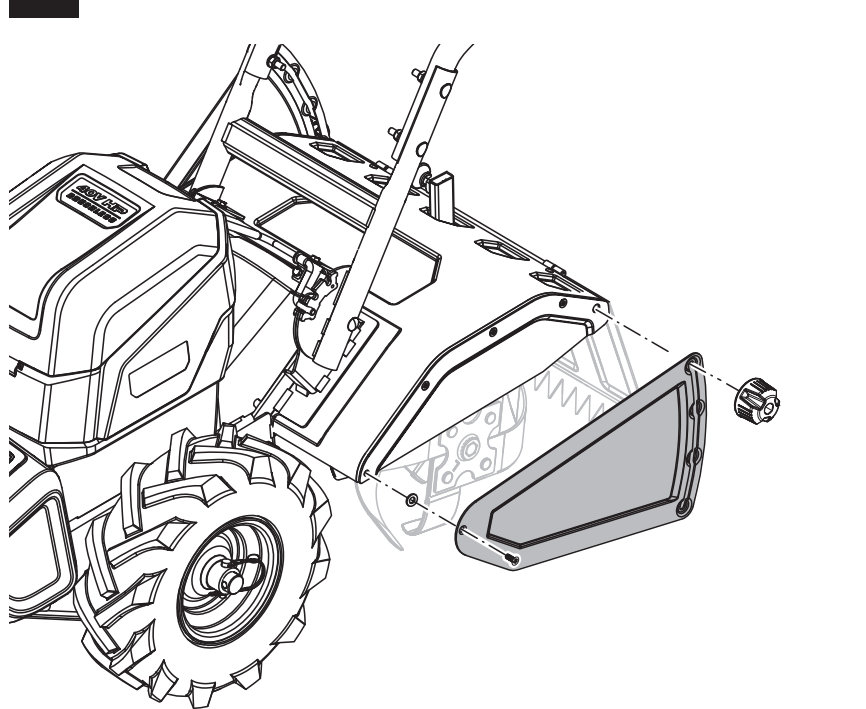
4 Attach ballast tank (see page 7).



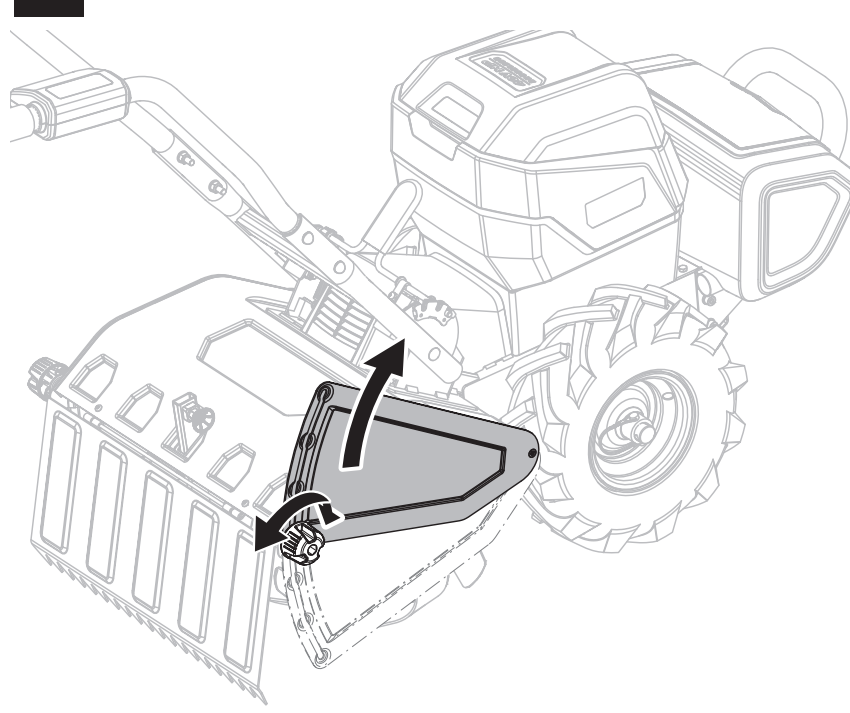
5 Install the wheels. Align the hole in the wheel with the hole farthest from the end of the axle (see page 7).



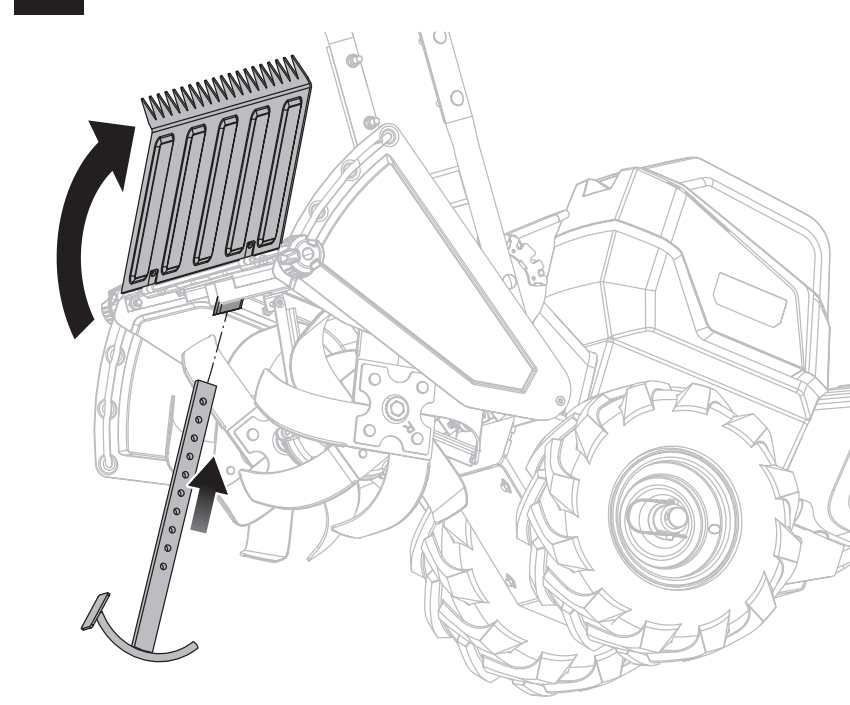
6 Install the side panel (see page 8).



7 Adjust side panels (see page 8).



8 Install the depth bar (see page 8).

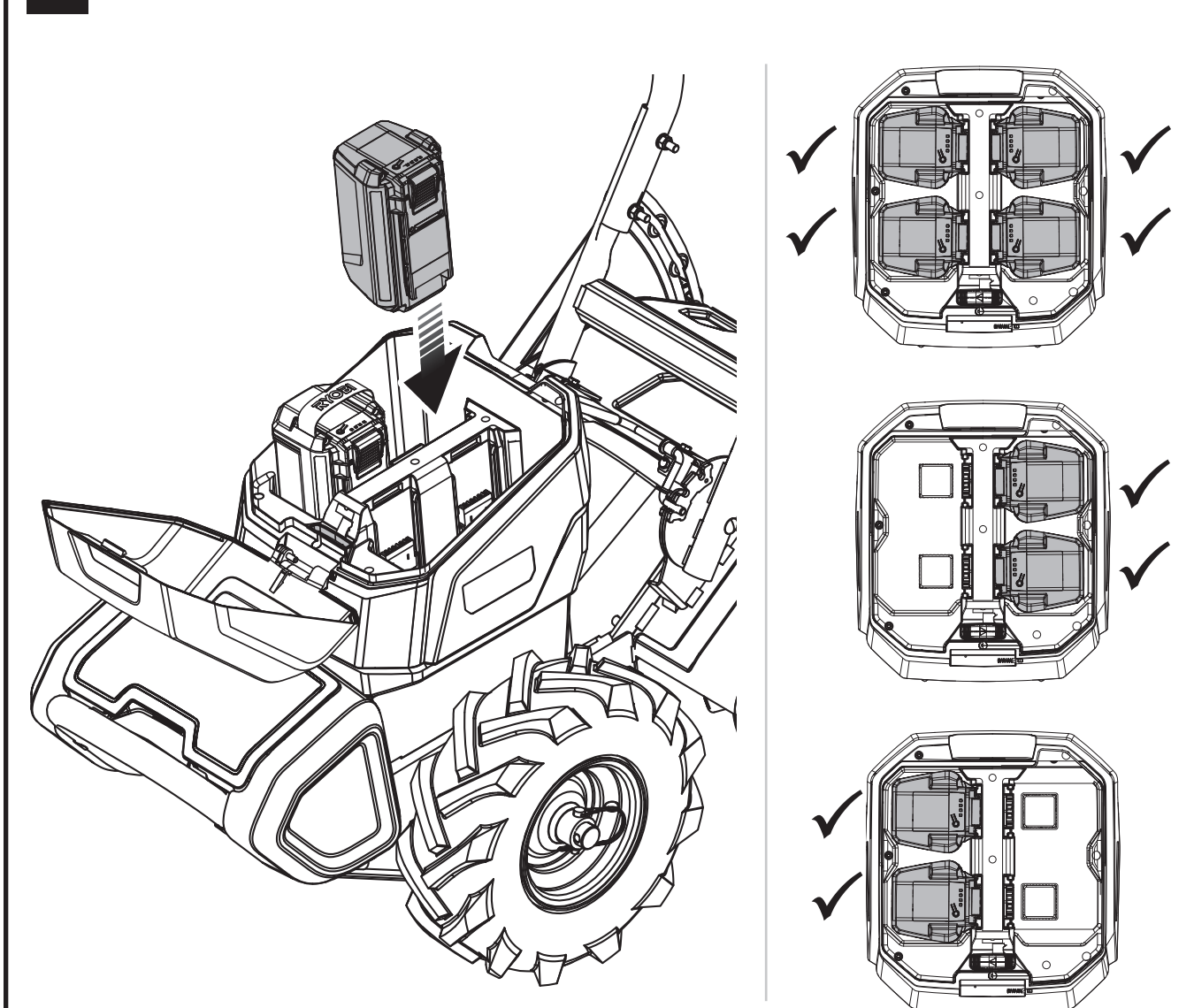


9 Install depth bar handle (see page 8).

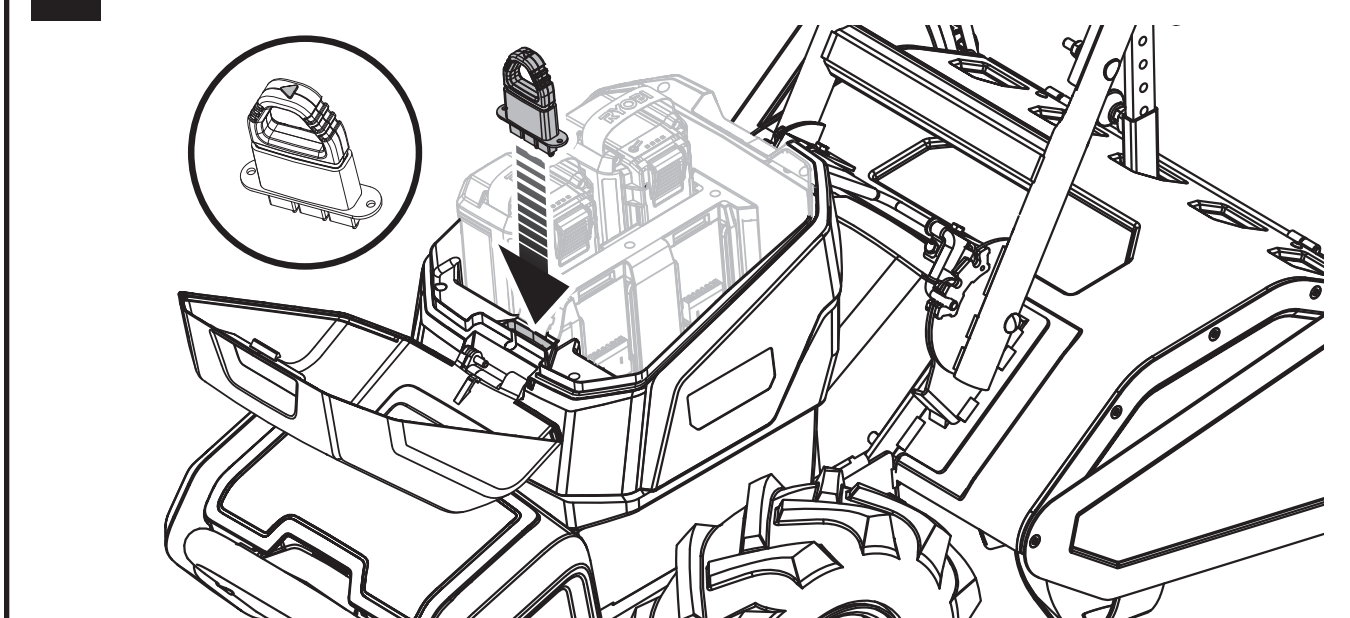


STARTING THE UNIT

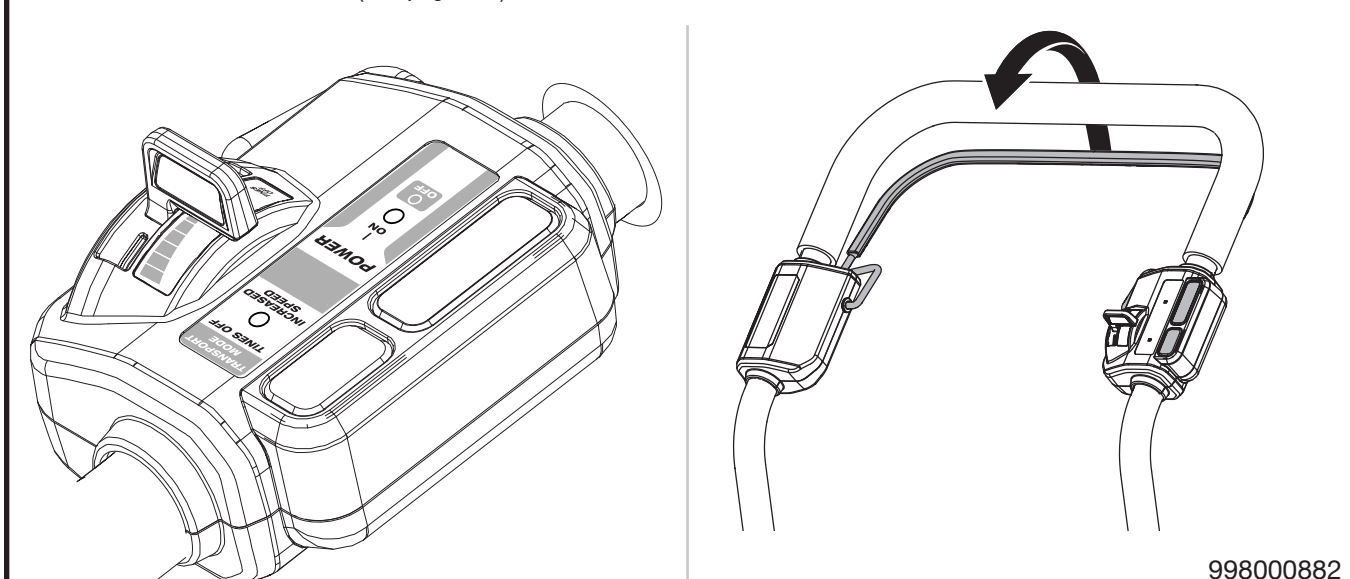
1 Install at least two 40V batteries on either the left side (PAIR A) or the right side (PAIR B) (see page 8).



2 Insert the start key with the arrow facing a pair of charged battery packs (see page 8).



3 Press and hold the start button. Pull the bail toward the handle and release the start button when the motor and tines starts (see page 8-9).



Make the most of your purchase! Go to www.ryobitools.com and register your new tool online.
For questions about operating or maintaining your product please call, 1-800-525-2579.