

**RYOBI**  
**25cc String Trimmers**  
**Manufacturing Numbers**  
**090333026 and 090333027**  
**Item Numbers**  
**RY25PHEMC and RY25CSEMC**  
**Repair Sheet**

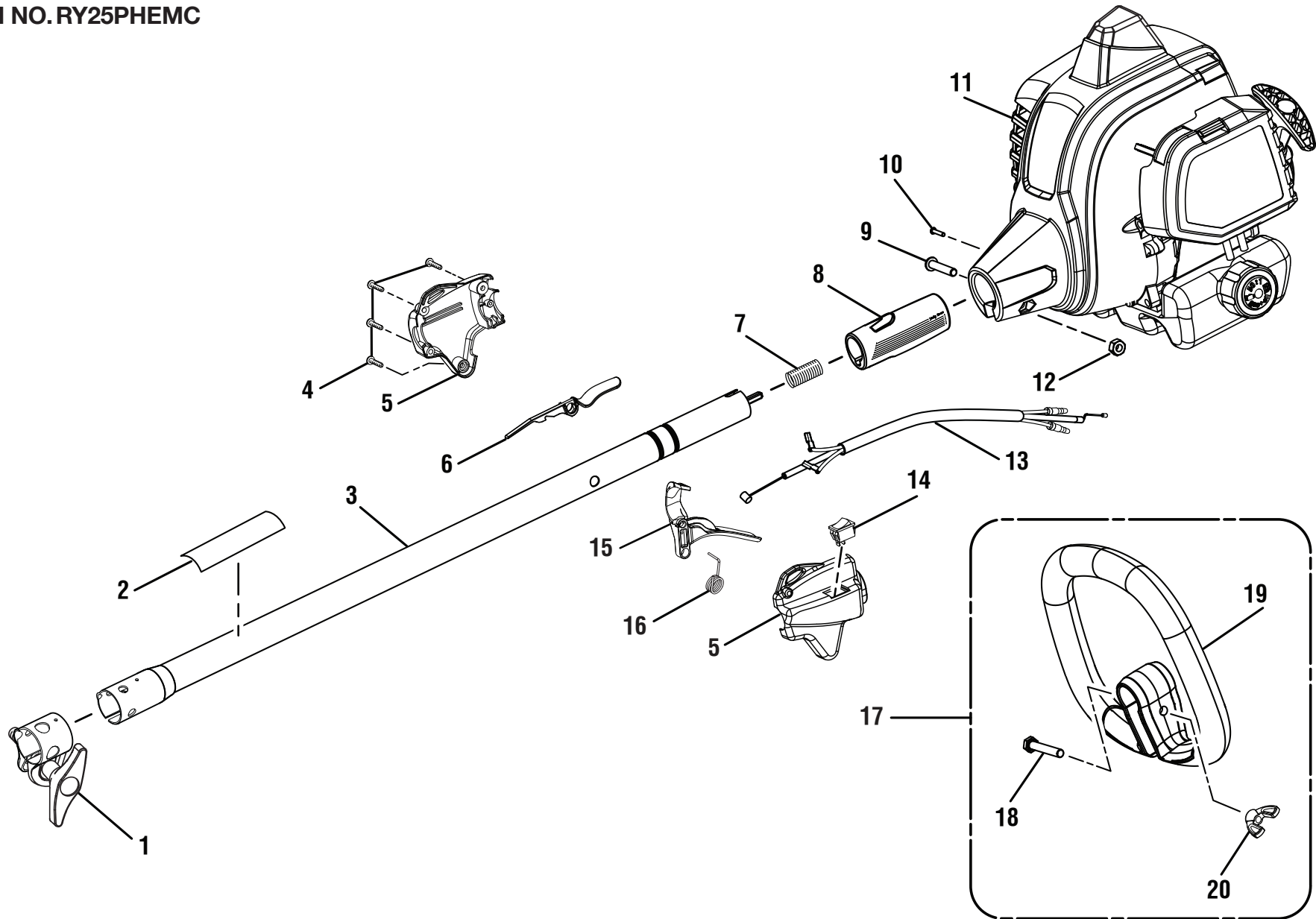
**TECHTRONIC INDUSTRIES POWER EQUIPMENT**

P.O. Box 1288, Anderson, SC 29622 USA

1-800-860-4050

[www.ryobitools.com](http://www.ryobitools.com)

FIGURE A  
ITEM NO. RY25PHEMC



**RYOBI 25cc STRING TRIMMERS – ITEM NUMBERS RY25PHEMC AND RY25CSEMC**

**PARTS LIST (FIGURE A)**

KEY NO.	PART NUMBER	DESCRIPTION	QTY
1	312630001	Boom Clamp Assembly .....	1
2	940657164	Warning Icon Label.....	1
3	308470060	Upper Boom Assembly (Inc. Key Nos. 1-2).....	1
4	660563002	Screw (M4 x 20 mm, T20 Torx Hd. S.T.) .....	4
5	310831005	Control Handle Assembly (Inc. Key No. 4) .....	1
6	518695012	Trigger Lock.....	1
7	690140011	Compression Spring.....	1
8	570234002	Rear Handle Grip .....	1
9	T660697001	Screw (M6 x 30 mm, T27 Torx Button Hd.) .....	1
10	660925011	Screw (M4 x 8 mm, T20 Torx Pan Hd. S.T.).....	1
11	205044003	Powerhead Assembly w/Labels .....	1
12	678029002	Hex Nut (M6 x 1).....	1
13	307318001	Throttle Cable and Wire Assembly .....	1
14	760961002	On/Stop Switch .....	1
15	518696020	Trigger.....	1
16	690694002	Trigger Spring .....	1
17	308991003	Front Handle Assembly (Inc. Key Nos. 18-20).....	1
18	660643008	Screw (1/4-20 x 40 mm, Cap Hex Hd.) .....	1
19	526764002	Front Handle .....	1
20	518949001	Wing Nut (1/4-20) .....	1

**NOT SHOWN**

991000345 Operator's Manual (RY25PHEMC, 961494004)

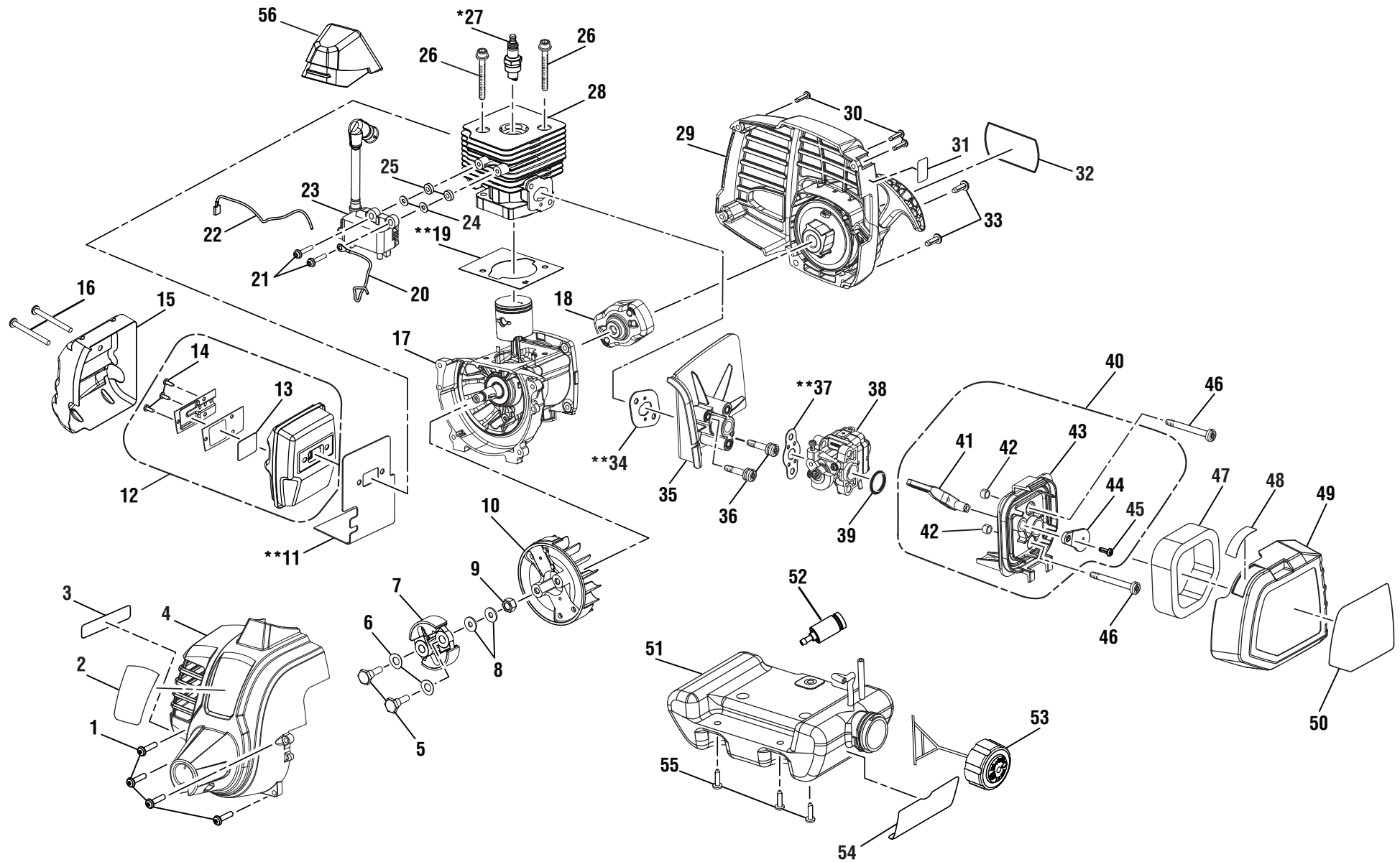
995000050 Operator's Manual (RY25CSEMC, 961494017)

2-13-19

(Rev:02)

RYOBI 25cc STRING TRIMMERS – ITEM NUMBERS RY25PHEMC AND RY25CSEMC

FIGURE B  
ITEM NO. RY25PHEMC



**RYOBI 25cc STRING TRIMMERS – ITEM NUMBERS RY25PHEMC AND RY25CSEMC**

**PARTS LIST (FIGURE B)**

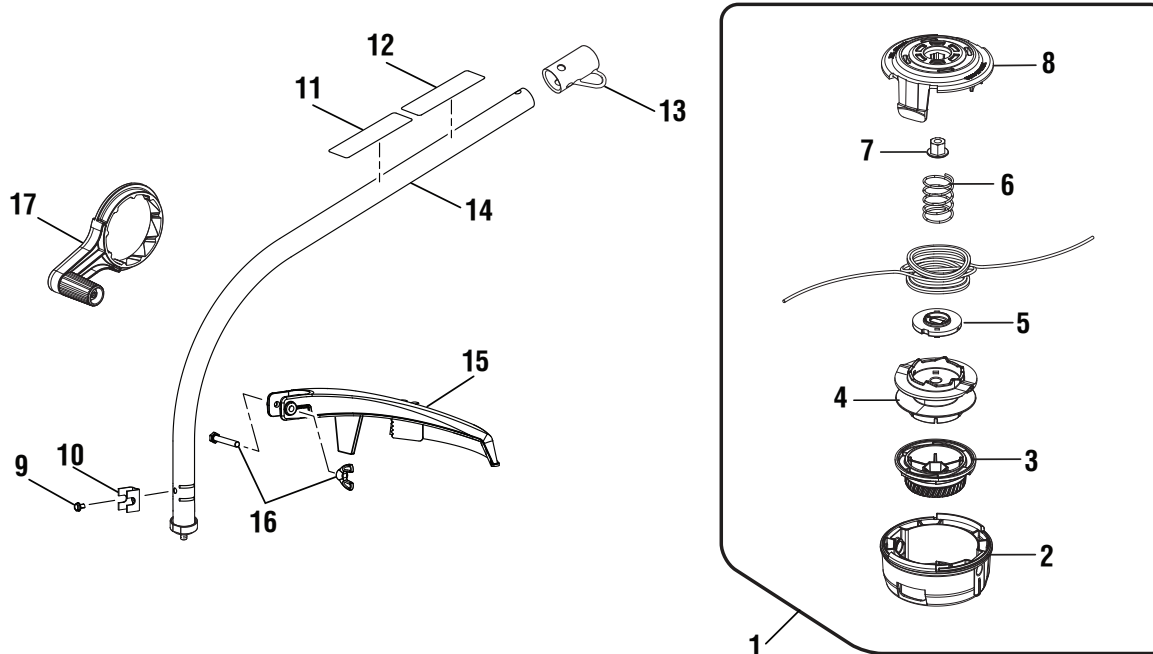
<b>KEY NO.</b>	<b>PART NUMBER</b>	<b>DESCRIPTION</b>	<b>QTY</b>	<b>KEY NO.</b>	<b>PART NUMBER</b>	<b>DESCRIPTION</b>	<b>QTY</b>
1	660344001	Screw w/Washer (M5 x 20 mm, T20 Torx Pan Hd.).....	4	31	941788001	Primer Bulb Location Label.....	1
2	940627041	Logo Label (Front) .....	1	32	940627042	Logo Label (Rear) .....	1
3	940654088	Combustion Warning Label.....	1	33	660351001	Cap Screw w/Washer (M5 x 16 mm, T25 Torx Soc. Hd.).....	2
4	205082001	Front Housing Assembly (Inc. Key Nos. 2-3) .....	1	34	903279002	** Insulator Gasket .....	1
5	660353001	Clutch Shoulder Bolt (M6 x 22.5 mm, Hex Hd.).....	2	35	528275001	Heat Dam Insulator.....	1
6	690696001	Curved Washer.....	2	36	T662210002	Screw (M5 x 30 mm, T25 Torx Pan Hd. S.T.).....	2
7	307091001	Clutch Assembly .....	1	37	903034001	** Gasket .....	1
8	690695001	Washer (ID6 x OD15 x 1.2t).....	2	38	307160009	Carburetor Assembly (Inc. Key No. 39) .....	1
9	690689001	Flywheel Nut.....	1	39	563841001	Carburetor O-Ring.....	1
10	307156001	Flywheel.....	1	40	307191001	Airbox Base Assembly (Inc. Key Nos. 41-45).....	1
11	630002032	** Muffler Gasket.....	1	41	591442001	Choke Lever .....	1
12	300748043	Muffler Assembly (Inc. Key Nos. 13-14).....	1	42	678515015	Compression Limiters .....	2
13	638268001	Screen .....	1	43	591440001	Air Box Base.....	1
14	660870001	Screw (6-20 x 1/4 in., T20 Torx Pan Hd. S.T.).....	3	44	590946001	Choke Plate.....	1
15	638027002	Heat Shield.....	1	45	660345001	Screw (M4 x 12 mm, T20 Torx Pan Hd. S.T.).....	1
16	660347001	Screw (M5 x 50 mm, T25 Torx Pan Hd.).....	2	46	660454015	Screw (M5 x 44 mm, T20 Torx Pan Hd.).....	2
17	307192001	Crankcase Assembly.....	1	47	560873001	Air Filter .....	1
18	308004003	Starter Cup.....	1	48	940647111	Choke Position Label .....	1
19	900709007	** Gasket.....	1	49	308649003	Airbox Cover (Inc. Key Nos. 48 & 50).....	1
20	290143002	Lead Wire (Red).....	1	50	940686168	Starting Instructions Label .....	1
21	660968004	Screw w/Washer (M4 x 22 mm, T20 Torx Pan Hd. S.T.).....	2	51	205043001	Fuel Tank and Cap Assembly (Inc. Key Nos. 52-54).....	1
22	290143001	Lead Wire (Black).....	1	52	310976001	Fuel Filter.....	1
23	291337005	Coil Boot Assembly.....	1	53	310816018	Fuel Cap Assembly .....	1
24	690969001	Washer (ID4.2 x OD10 x 1t).....	2	54	940864004	Fuel Mixture Label.....	1
25	590462001	Spacer (Phenolic) .....	2	55	660970002	Shoulder Screw (M4 x 14 mm, T25 Torx Truss Hd. S.T.).....	3
26	660342001	Screw (M5 x 22 mm, Soc. Hd.) .....	2	56	534331001	Spark Plug Boot .....	1
27	870174001	* Spark Plug (Champion RCJ6Y) .....	1				
28	642368001	Cylinder .....	1				
29	205097001	Rear Housing and Starter Assembly (Inc. Key Nos. 31-32).....	1				
30	660563002	Screw (M4 x 18 mm, T20 Torx Pan Hd. S.T.).....	3				
					<b>Not Shown:</b>		
					000998930	Spark Arrestor Kit (Inc. Key Nos. 13-14)	
					120900269	High Altitude Kit (Not Included)	

\* Standard Hardware Item – May Be Purchased Locally

\*\* Non-Reuseable Parts = Keys 11, 19, 34 and 37

RYOBI 25cc STRING TRIMMERS – ITEM NUMBERS RY25PHEMC AND RY25CSEMC

FIGURE C  
ITEM NO. RY25CSEMC



KEY NO.	PART NUMBER	DESCRIPTION	QTY
1	311759013	Trimmer Head Assembly (.095) (Inc. Key Nos. 2-8).....	1
2	530366001	Lower Housing .....	1
3	530455002	Bump Knob (Green).....	1
4	530670001	Spool .....	1
5	529803001	String Guide.....	1
6	678749001	Compression Spring.....	1
7	662569001	Flange Nut (M8) .....	1
8	530001004	Upper Housing .....	1
9	660647001	Screw (#10-32 x 3/8 in., Hex Washer Hd. S.T.) .....	1
10	638001001	Clamp .....	1
11	940726013	Expand-it Label .....	1
12	940657165	Warning Icon Label.....	1
13	518019002	Storage Hanger Cap.....	1
14	307486002	Curved Shaft Assembly (Inc. Key Nos. 9-13) .....	1
15	308744010	Grass Deflector Assembly (Inc. Key No. 16) .....	1
16	205012001	Fastener Kit .....	1
17	312283001	Crank Handle Assembly .....	1