

REPAIR SHEET

BRAND

RYOBI

DESCRIPTION

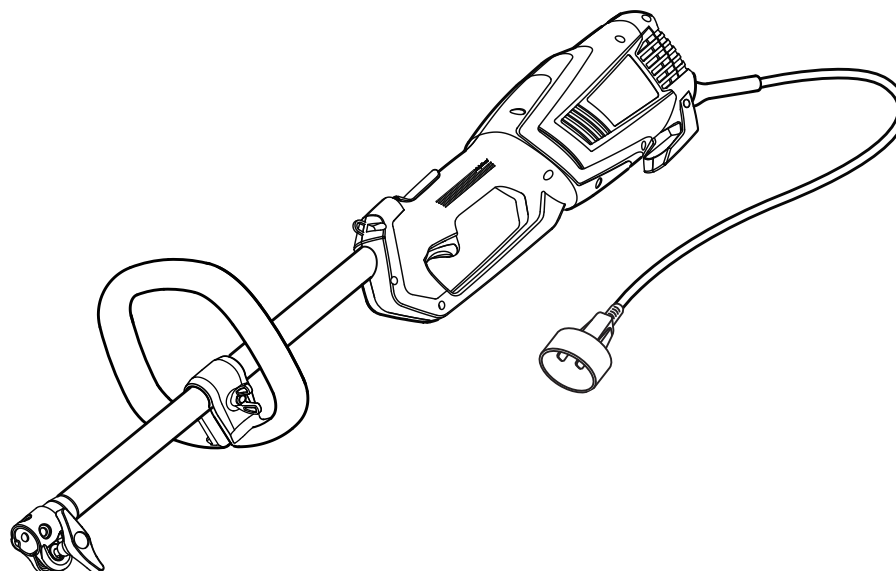
Electric Power Head

MODEL NO.

RY15124

MFG. NO.

099839001

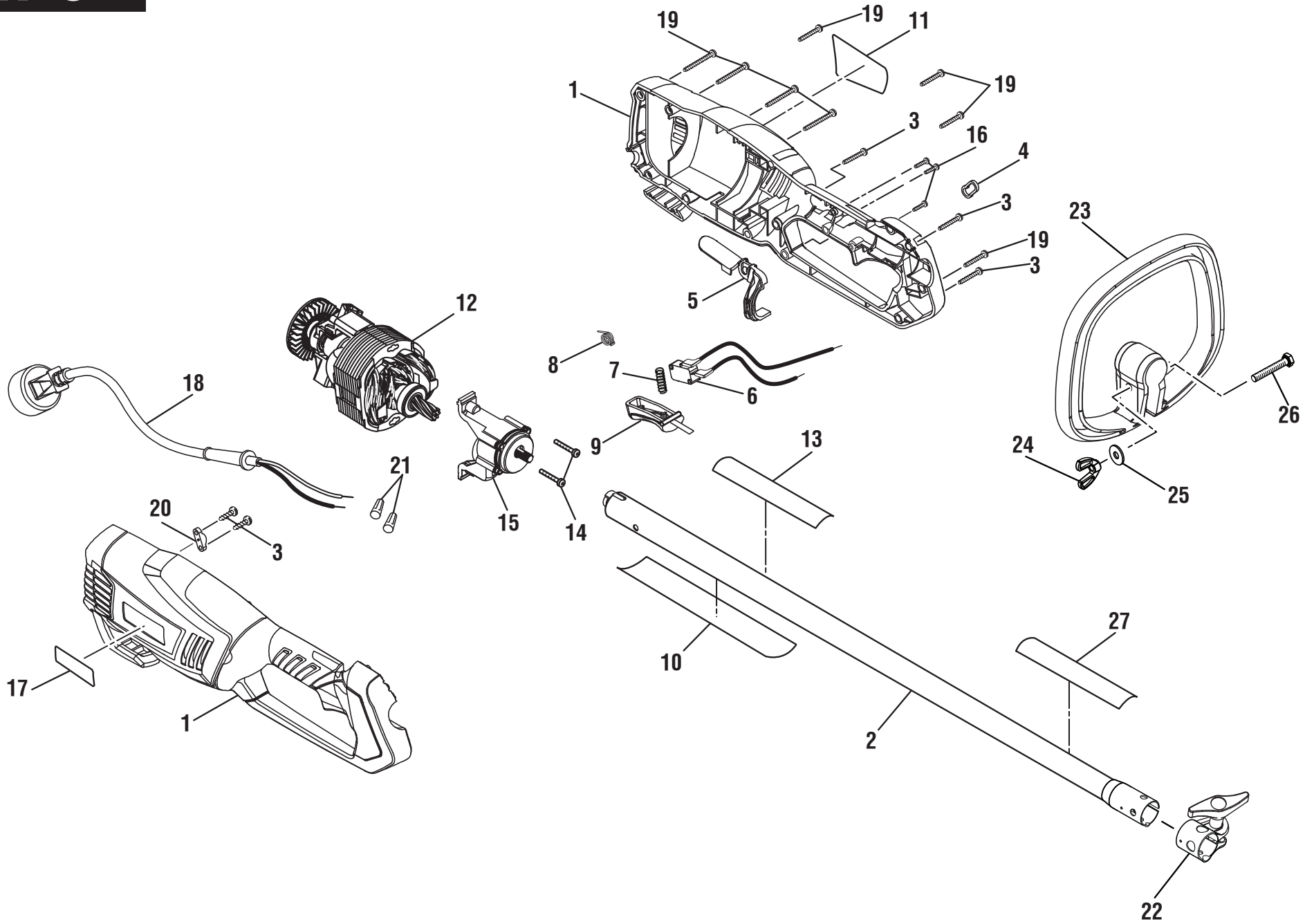


TECHTRONIC INDUSTRIES POWER EQUIPMENT

P.O. Box 1288, Anderson, SC 29622 ■ 1-800-525-2579 ■ www.ryobitools.com

2-3-21 (Rev:03)

The model number and manufacturing location will be found on a label attached to the product. Always mention this information in all communications regarding this product and when ordering parts.

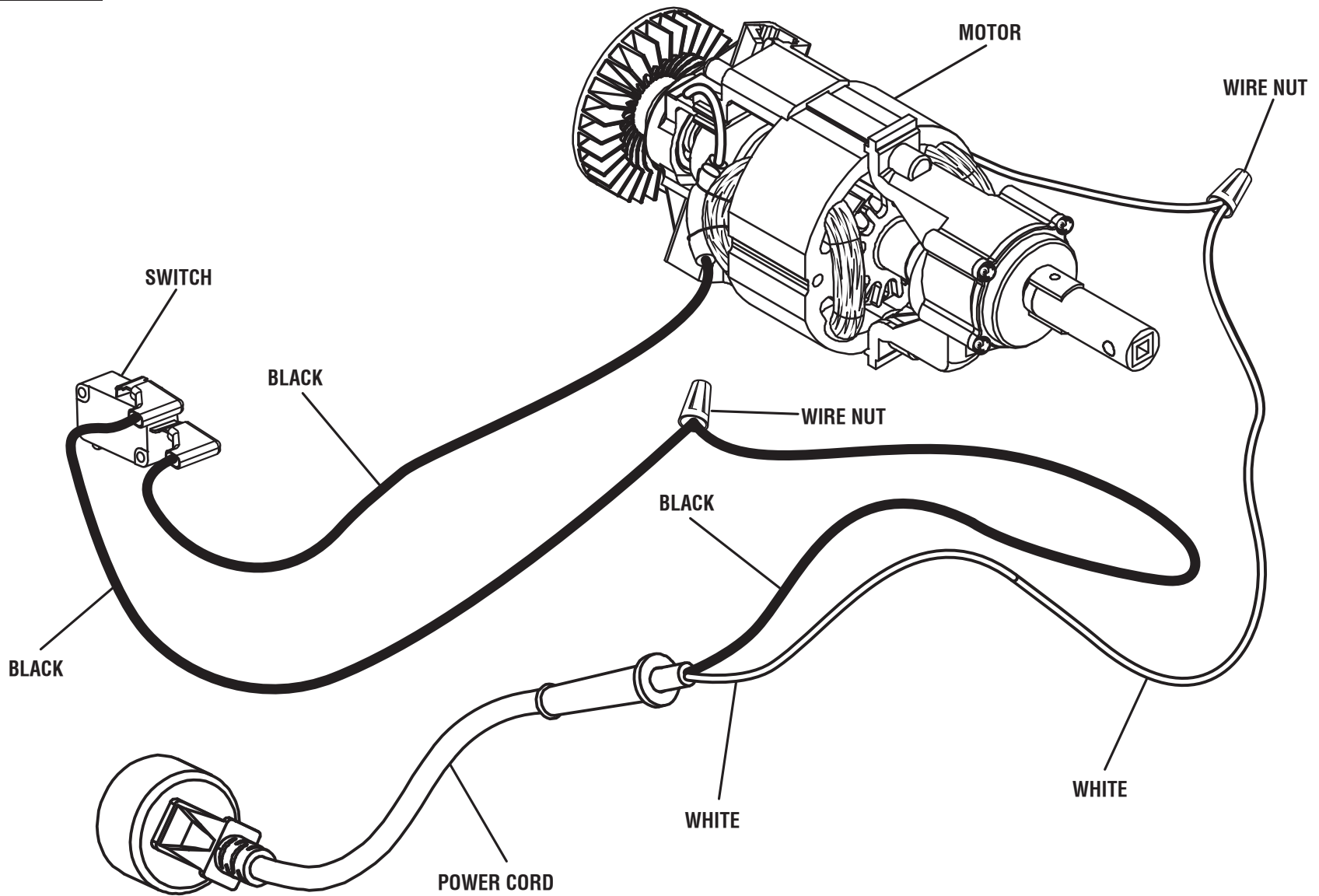


PARTS LIST

| KEY NO. | PART NO. | DESCRIPTION | QTY. |
|---------|--------------|--|------|
| 1 | 099839001009 | Housing Assembly | 1 |
| 2 | 099839001002 | Boom Assembly | 1 |
| 3 | 099839001020 | Screw (M4 x 14 mm) | 5 |
| 4 | 099839001007 | Strap Hook | 1 |
| 5 | 099839001017 | Lock-Out Lever | 1 |
| 6 | 099839001014 | Switch Assembly w/Leads | 1 |
| 7 | 099839001018 | Compression Spring | 1 |
| 8 | 099839001008 | Torsion Spring | 1 |
| 9 | 099839001022 | Switch Trigger | 1 |
| 10 | 099919001902 | Warning Label (French) | 1 |
| 11 | 941588045 | Data Label/Warning Label (English and Spanish) | 1 |
| 12 | 099839001011 | Motor Assembly | 1 |
| 13 | 099919001900 | Icon Strip Label | 1 |
| 14 | 099839001012 | Screw | 2 |
| 15 | 099839001010 | Gear Assembly | 1 |

| KEY NO. | PART NO. | DESCRIPTION | QTY. |
|---------|-------------------|--------------------------|------|
| 16 | 099839001021 | Screw (M3 x 12 mm) | 3 |
| 17 | 940705492 | Logo Label | 1 |
| 18 | 099839001015 | Power Cord Assembly | 1 |
| 19 | 099839001019 | Screw (M4 x 16 mm) | 8 |
| 20 | 099839001016 | Cord Clamp | 1 |
| 21 | 099839001013 | Wire Nut | 2 |
| 22 | 099839001001 | Boom Clamp Assembly | 1 |
| 23 | 099839001005 | Front Handle | 1 |
| 24 | 099839001003 | Wing Nut (1/4-20) | 1 |
| 25 | 099839001004 | Washer (1/4 in.) | 1 |
| 26 | 099839001006 | Bolt (1/4-20 x 40 mm) | 1 |
| 27 | 941263016 | Attachment Capable Label | 1 |
| | Not Shown: | | |
| | 990000718 | Operator's Manual | |

⚠ WARNING: Improper repair of a double insulated tool can result in damage to the double insulation system possibly causing electrical shock or electrocution. Any repairs requiring disassembly of your tool requires safety testing and should only be performed by a RYOBI Authorized Service Center. For the service center nearest you call 1-800-525-2579.



WIRING DIAGRAM