

REPAIR SHEET

BRAND

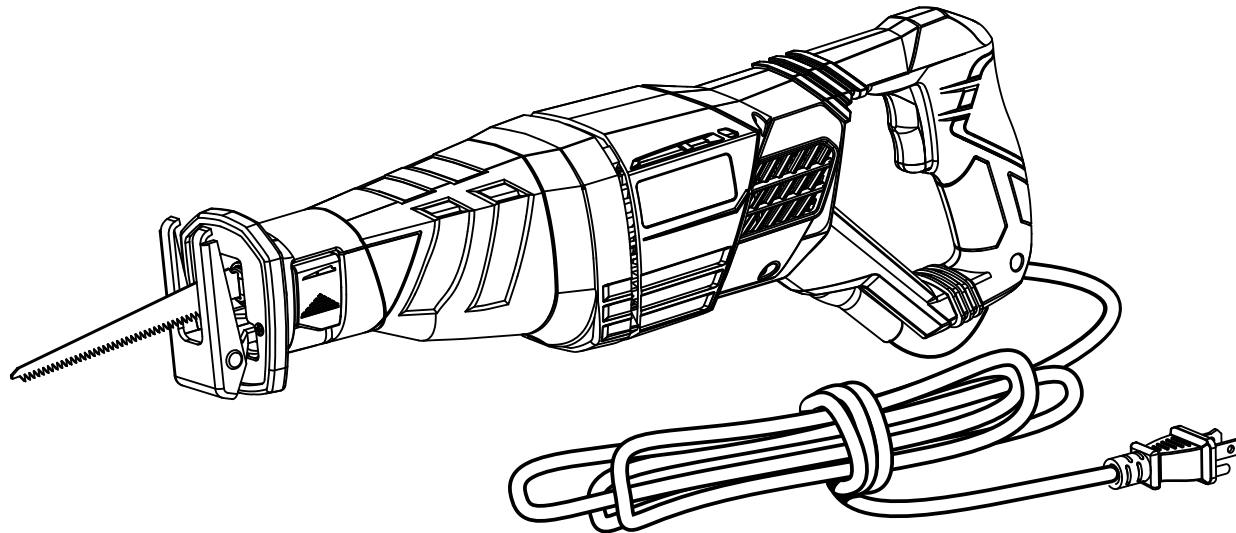
RYOBI

DESCRIPTION

MODEL NO.

RJ186V

Variable Speed Reciprocating Saw

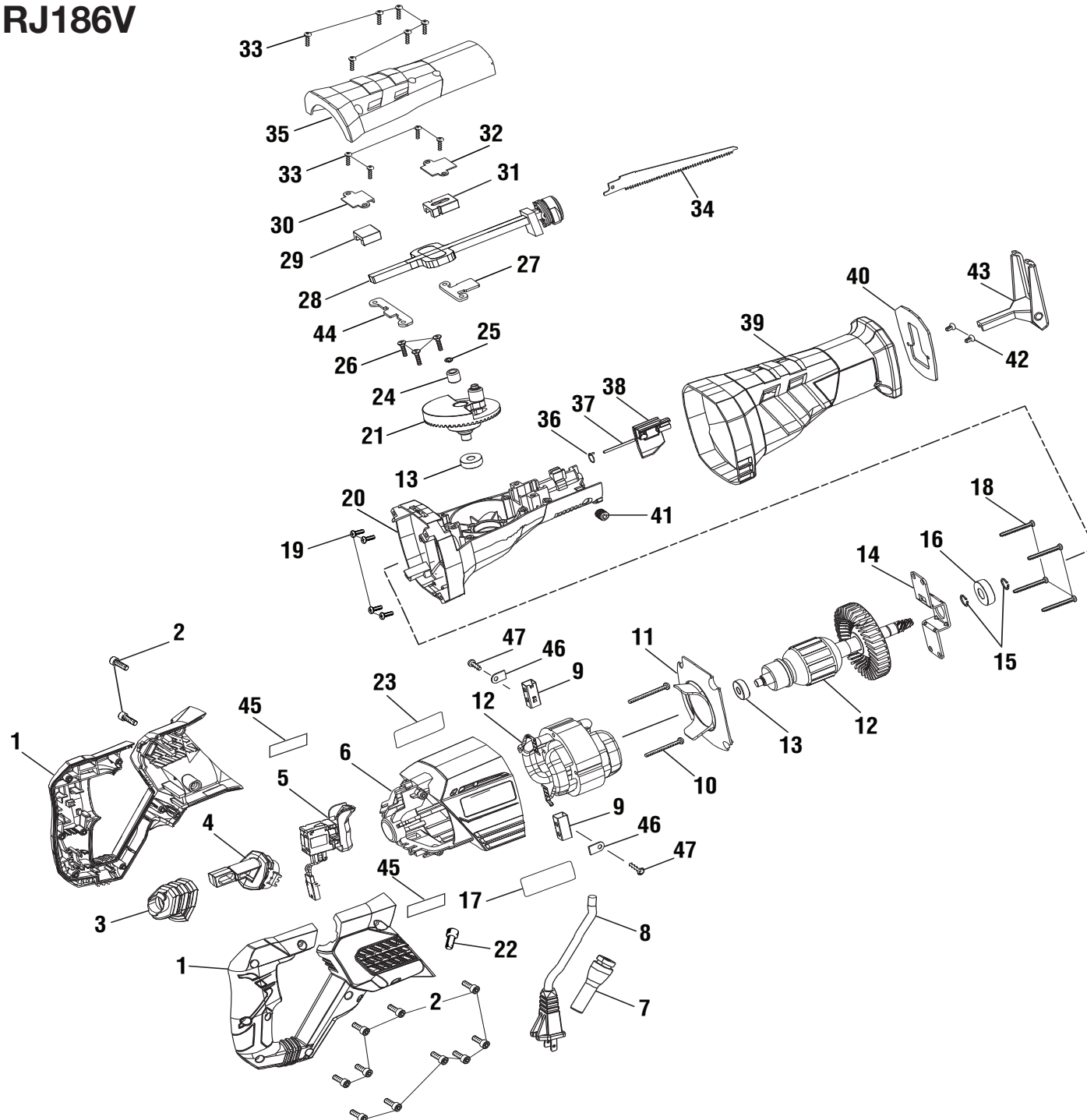


ONE WORLD TECHNOLOGIES, INC.

P.O. Box 1288, Anderson, SC 29622 ■ 1-800-525-2579 ■ www.ryobitools.com

2-19-21 (Rev:05)

The model number and manufacturing location will be found on a label attached to the product. Always mention this information in all communications regarding this product and when ordering parts.





RJ186V

PARTS LIST

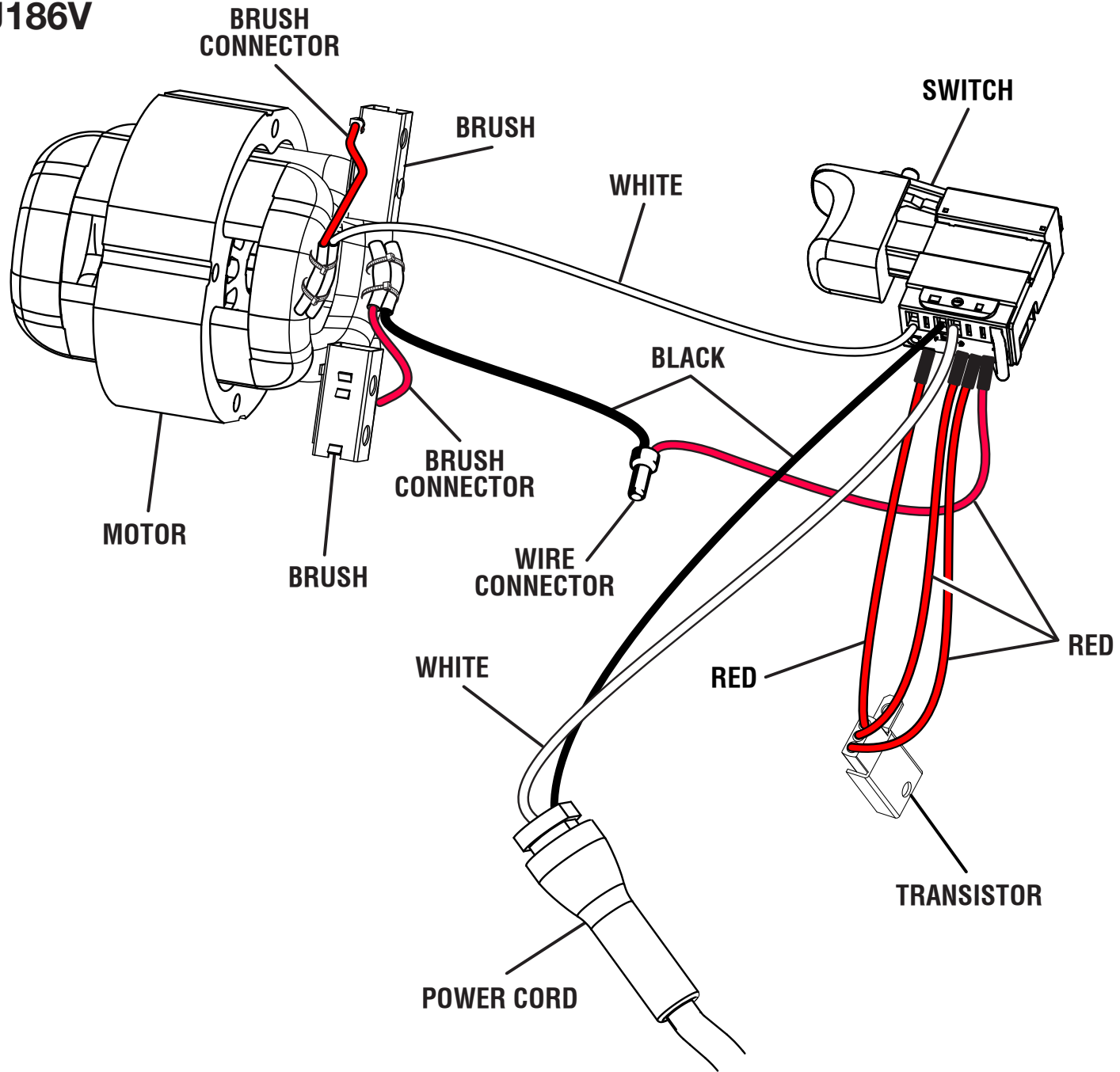
KEY NO.	PART NO.	DESCRIPTION	QTY.
1	202664002	Handle Assembly	1
2	660024015	Screw (M4 x 14 mm, T20 Torx Hd.)	12
3	564095001	Rubber Sleeve	1
4	523283001	Connecting Rod	1
5	760472006	Switch	1
6	202665002	Motor Housing Assembly (Inc. Key Nos. 17 & 23)	1
7	551060001	Bend Relief	1
8	730372041	Power Cord	1
9	290075051	Brush Assembly	2
10	661748001	Screw (M4.2 x 44 mm, Pan Hd.)	2
11	526258001	Baffle	1
12	206187003	Motor Assembly (Inc. Key Nos. 13-16)	1
13	680141022	Ball Bearing (608ZZ)	2
14	634912002	Bearing Cover	1
15	6939601	C-Ring	2
16	690395005	Ball Bearing (6001ZZ)	2
17	941121452	Data Label	1
18	660259008	Screw (M4.5 x 35 mm, Pan Hd.)	4
19	660228012	Screw (M3 x 8 mm, Flat Hd.)	4
20	642155002	Gear Case	1
21	202803001	Bevel Gear & Pinion Assembly	1
22	790009001	Wire Connector	1
23	940304497	Logo Label	1
24	680296010	Needle Bearing	1
25	6770401	Retaining Ring	1

KEY NO.	PART NO.	DESCRIPTION	QTY.
26	661185001	Screw (8-32 x 1/2 in., T15 Torx Flat Hd.)	3
27	635222001	Front Plate	1
28	304003006	Output Shaft Assembly	1
29	6935601	Guide Block (Rear)	1
30	6934901	Cover Plate (Rear)	1
31	610730001	Guide Block (Front)	1
32	6934201	Cover Plate (Front)	1
33	661171001	Screw (M4 x 17 mm, T20 Torx Pan Hd.)	10
34	690291006	Wood Cutting Blade	1
35	526259001	Gear Case Cover	1
36	690502001	Torsion Spring	1
37	6951801	Pin	1
38	306145001	Release Lever Assembly	1
39	563258001	Rubber Boot	1
	563431001	Rubber Boot	1
40	634971001	Guide Plate	1
41	660170001	Screw (M10 x 10 mm, Hex Soc. Hd.)	1
42	660165015	Screw (M4 x 10 mm, T20 Torx Pan Hd.)	2
43	300216056	Shoe Assembly	1
44	635224001	Rear Plate	1
45	902164005	Mica Sheet	2
46	630801001	Brush Tube Clamp	2
47	660140002	Screw (8-16 x 1/2 in., Pan Hd.)	2
	Not Shown:		
	991000417	Operator's Manual	

▲ WARNING: Improper repair of a double insulated tool can result in damages to the double insulation system possibly causing electrical shock or electrocution. Any repairs requiring disassembly of your tool requires safety testing and should only be performed by a RYOBI Authorized Service Center. For the service center nearest you call 1-800-525-2579.



RJ186V



WIRING DIAGRAM