

# REPAIR SHEET

BRAND

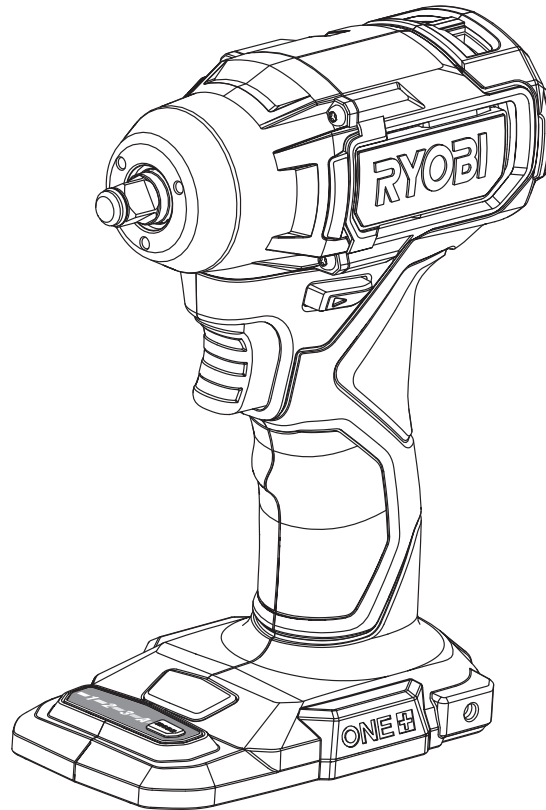
**RYOBI**

DESCRIPTION

**18V 3/8 in. Brushless Impact Wrench**

MODEL NO.

**PSBIW01**

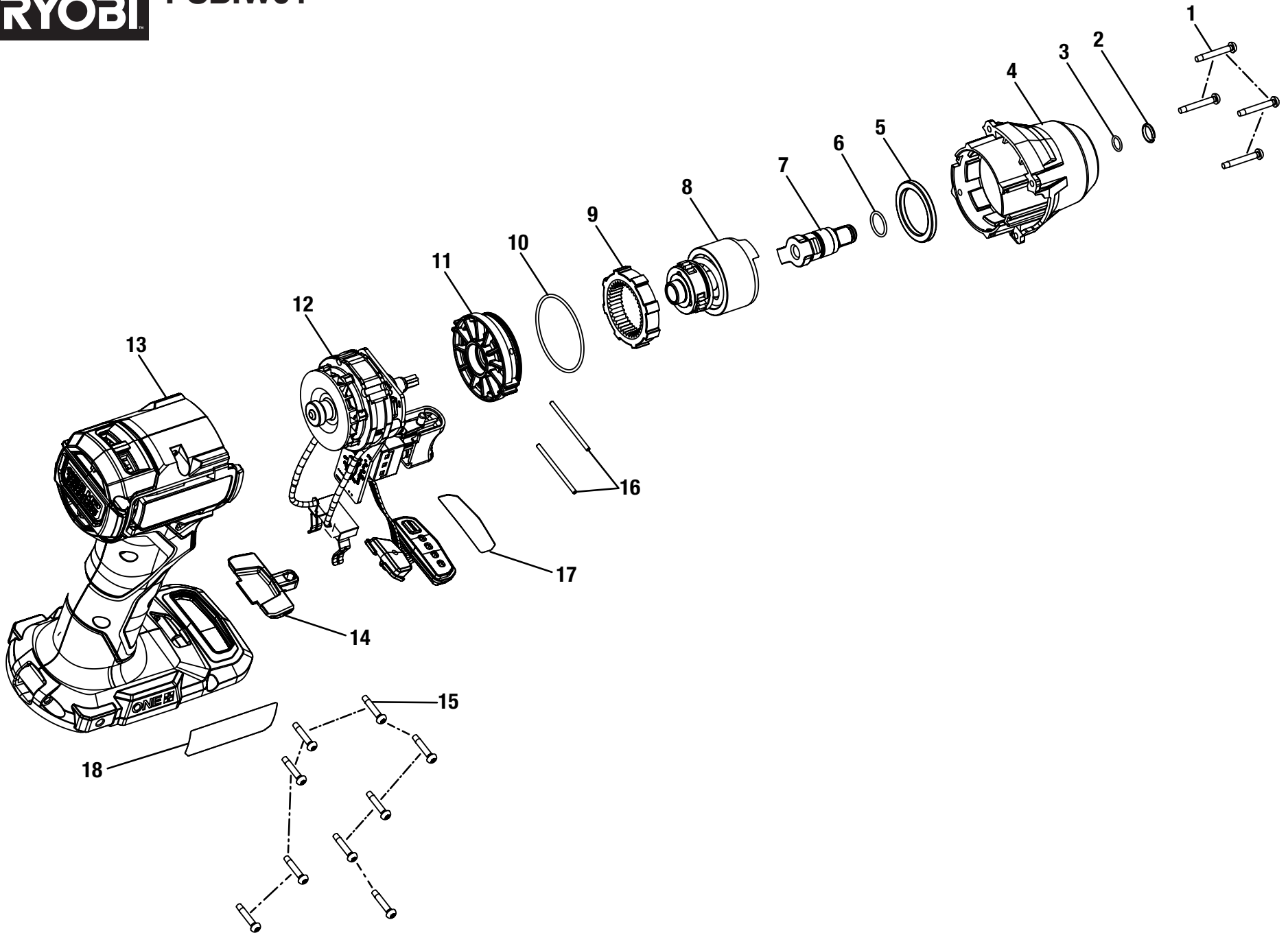


**TTI CONSUMER POWER TOOLS, INC.**

P.O. Box 1288, Anderson, SC 29622 ■ 1-800-525-2579 ■ [www.ryobitools.com](http://www.ryobitools.com)

**3-19-24 (Rev:05)**

*The model number and manufacturing location will be found on a label attached to the product. Always mention this information in all communications regarding this product and when ordering parts.*



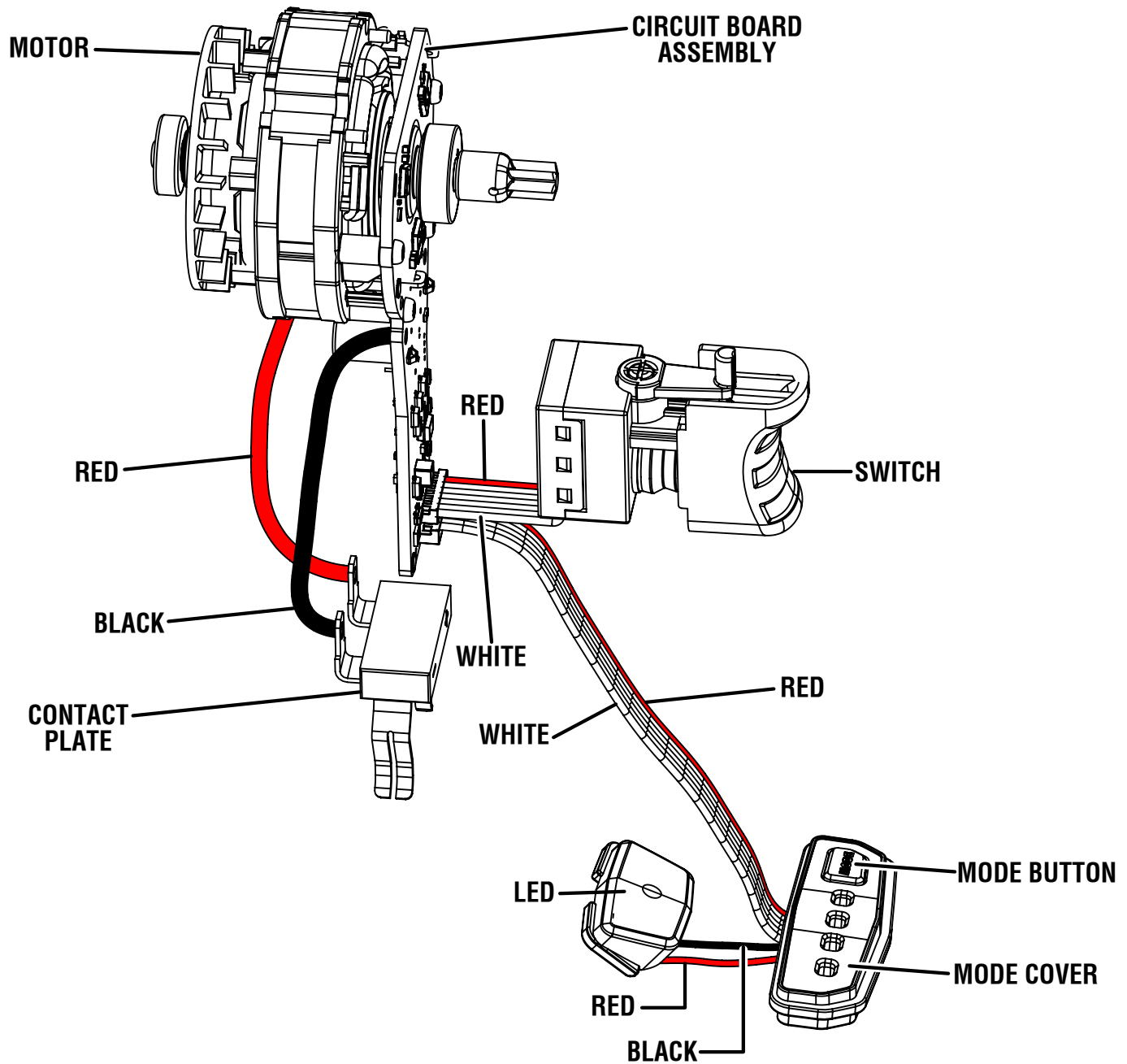


PSBIW01

PARTS LIST

KEY NO.	PART NO.	DESCRIPTION	QTY.
1	CN-660187012	Screw (M3 x 22 mm, T10 Torx Pan Hd.)	4
	VN-662483010	Screw (M3 x 22 mm, T10 Torx Pan Hd.)	4
2	CN/VN- 693518002 or 693518005	Friction Ring	1
	CN- 693518005	Friction Ring	1
	VN- 693518007	Friction Ring	1
3	562980002	O-Ring (OD7.4 x ID5.4 mm)	1
4	316330001	Front Gear Case with Insert Bush	1
5	637732001	Flat Washer	1
6	564543004	O-Ring (ID11.2)	1
7	621352248	3/8 in. Square Anvil	1
8	206134002	Gear Box Assembly	1
9	610449061	Ring Gear	1

KEY NO.	PART NO.	DESCRIPTION	QTY.
10	564076002	O-Ring (OD42.1 x ID39.1 mm)	1
11	205387001	Motor Front Case and Ball Bearing Assembly	1
12	CN- 206144002	Motor and Circuit Board Assembly	1
	VN- 206144003	Motor and Circuit Board Assembly	1
13	205390001	Housing Assembly	1
14	541257001	Forward/Reverse Button	1
15	662456001	Screw (M3 x 16 mm, T10 Torx Pan Hd.)	9
16	674064001 or 674064004	Pin	2
	941120600	Warning Label	1
18	CN- 941123043	Data Label	1
	VN- 941123045	Data Label	1
	<b>Not Shown:</b>		
	998000203	Operator's Manual (961153397)	



**WIRING DIAGRAM**