

REPAIR SHEET

BRAND

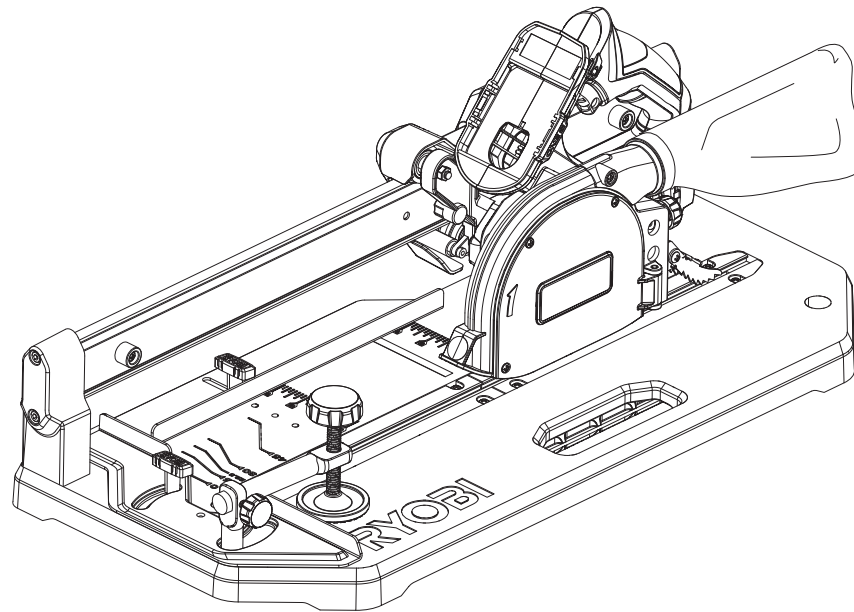
RYOBI

DESCRIPTION

18 Volt 5-1/2 in. Flooring Saw

MODEL NO.

PGC21

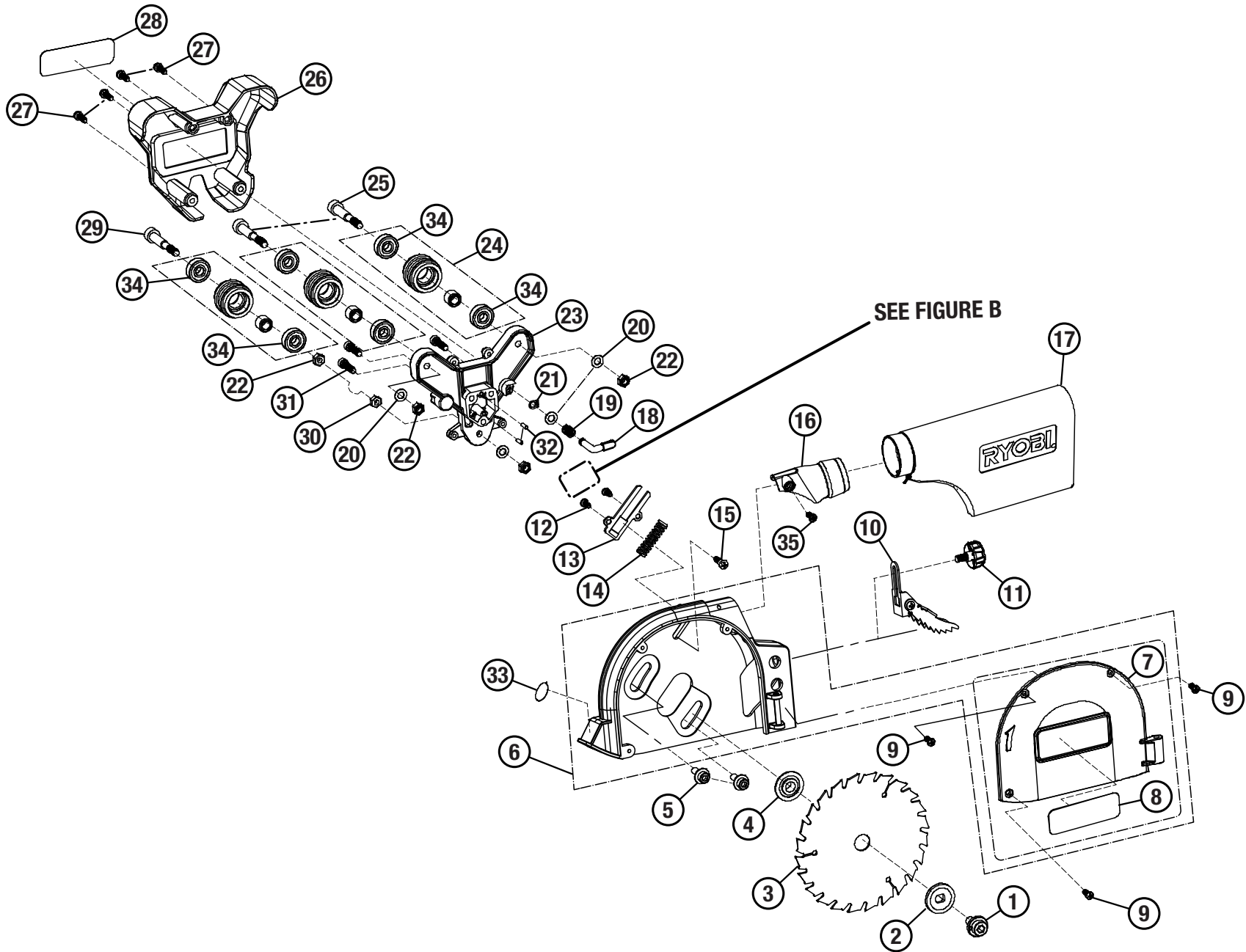


TTI CONSUMER POWER TOOLS, INC.

P.O. Box 1288, Anderson, SC 29622 ■ 1-800-525-2579 ■ www.ryobitools.com

4-29-24 (Rev:03)

The model number and manufacturing location will be found on a label attached to the product. Always mention this information in all communications regarding this product and when ordering parts.



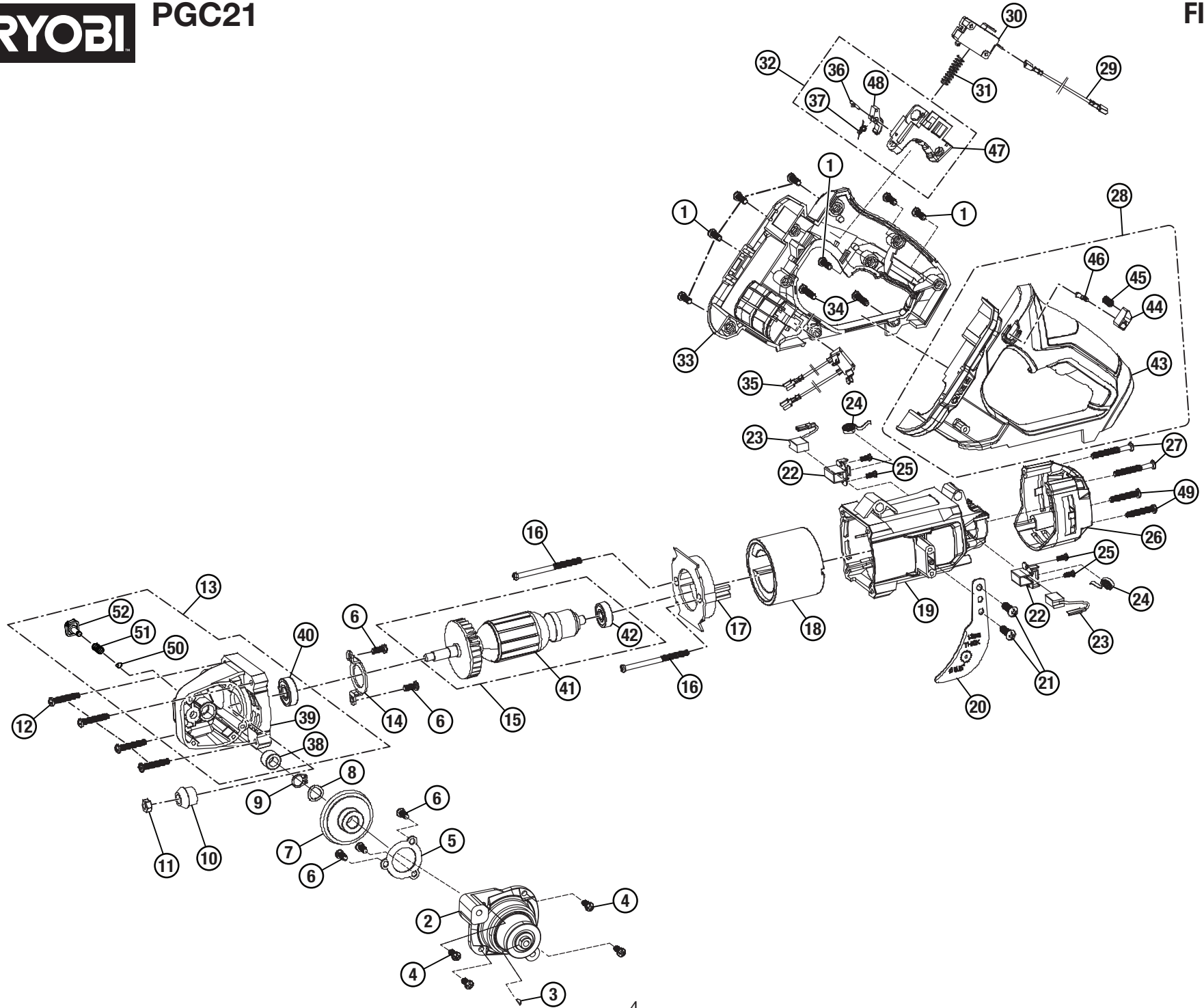


PGC21

PARTS LIST – FIGURE A

KEY NO.	PART NO.	DESCRIPTION	QTY.
1	089833001001	Blade Screw	1
2	089833001002	Outer Blade Washer	1
3	089833001003	Blade	1
4	089833001004	Inner Blade Washer	1
5	089833001005	Screw (M6 x 8 mm)	2
6	089833001201	Blade Guard Assembly (Inc. Key Nos. 7-8 & 33)	1
7	089833001008	Outer Blade Guard (Inc. Key No. 8)	1
8	089833001902	Logo Label	1
9	089833001009	Screw (ST4 x 10-F)	3
10	089833001202	Anti-Kick Plate Assembly	1
11	089833001016	Fence Knob	1
12	089833001017	Screw (ST4 x 10 mm)	2
13	089833001018	Spring Cover	1
14	089833001019	Guard Spring	1
15	089833001020	Screw (ST4 x 10 mm)	1
16	089833001118	Dust Chute	1
17	089833001203	Dust Bag Assembly	1
18	089833001075	Locating Bar	1
19	089833001076	Spring	1

KEY NO.	PART NO.	DESCRIPTION	QTY.
20	089833001077	Washer	4
21	089833001078	C-Ring	1
22	089833001079	Nut (M6)	4
23	089833001080	Roller Mount	1
24	089833001209	Roller Assembly (Inc. Key No. 37)	3
25	089833001084	Eccentric Bolt	2
26	089833001085	Roller Cover (Inc. Key No. 28)	1
27	089833001086	Screw (M4 x 16 mm)	4
28	089833001908	Logo Label	1
29	089833001087	Roller Bolt	1
30	089833001088	Nut (M6)	1
31	089833001089	Hex Screw (M5 x 20 mm)	3
32	089833001117	Round Pin (3 x 9)	2
33	089833001901	No Hands Label	1
34	089833001081	Bearing (608-2RS)	6
35	089833001021	Screw (M4 x 14 mm)	1
	Not Shown:		
	998000503	Operator's Manual (089833001911)	





PGC21

PARTS LIST – FIGURE B

KEY NO.	PART NO.	DESCRIPTION	QTY.
1	089833001021	Screw (M4 x 14 mm)	7
2	089833001204	Output Shaft Assembly	1
3	089833001030	Connection Key	1
4	089833001031	Screw (M4 x 14 mm)	4
5	089833001032	Bearing Plate	1
6	089833001033	Screw (M4 x 10 mm)	5
7	089833001034	Gear	1
8	089833001035	Wave Washer	1
9	089833001036	Retaining Ring	1
10	089833001037	Motor Pinion	1
11	089833001038	Nut (M6-LH)	1
12	089833001039	Screw (ST4 x 25 mm)	4
13	089833001205	Gear Case Assembly (Inc. Key Nos. 38-40)	1
14	089833001046	Bearing Plate	1
15	089833001206	Armature Assembly (Inc. Key Nos. 41-42)	1
16	089833001049	SCREW (ST4 X 60 mm)	2
17	089833001050	Baffle	1
18	089833001051	Field	1
19	089833001052	Motor Housing	1
20	089833001053	Riving Knife	1
21	089833001009	Screw (ST4 x 10-F)	2
22	089833001055	Carbon Brush Holder	2
23	089833001056	Carbon Brush	2
24	089833001057	Carbon Brush Spring	2
25	089833001058	Screw (ST2.9 x 8 mm)	4
26	089833001059	End Cap	1

KEY NO.	PART NO.	DESCRIPTION	QTY.
27	089833001060	Screw (ST4 x 35 mm)	2
28	089833001207	Handle Support Assembly (Inc. Key Nos. 43-46)	1
29	089833001065	Inner Wire	1
30	089833001066	Switch	1
31	089833001067	Trigger Spring	1
32	089833001208	Lock-Off Assembly (Inc. Key Nos. 36-37 & 47-48)	1
33	089833001072	Handle Cover	1
34	089833001073	Screw (ST4 x 18 mm)	2
35	089833001074	Contact Plate Holder	1
36	089833001070	Pin	1
37	089833001071	Torsion Spring	1
38	089833001040	Needle Bearing	1
39	089833001041	Gear Case	1
40	089833001042	Bearing (609-2RS)	1
41	089833001047	Armature	1
42	089833001048	Bearing (627-2RS)	1
43	089833001061	Handle Support	1
44	089833001062	Lock-On Button	1
45	089833001063	Spring	1
46	089833001064	Switch Lock Pin	1
47	089833001068	Trigger	1
48	089833001069	Lock-Off Actuator	1
49	089833001116	Screw (ST4 x 30 mm)	2
50	089833001043	C-Ring	1
51	089833001044	Spring	1
52	089833001045	Spindle Lock Knob	1

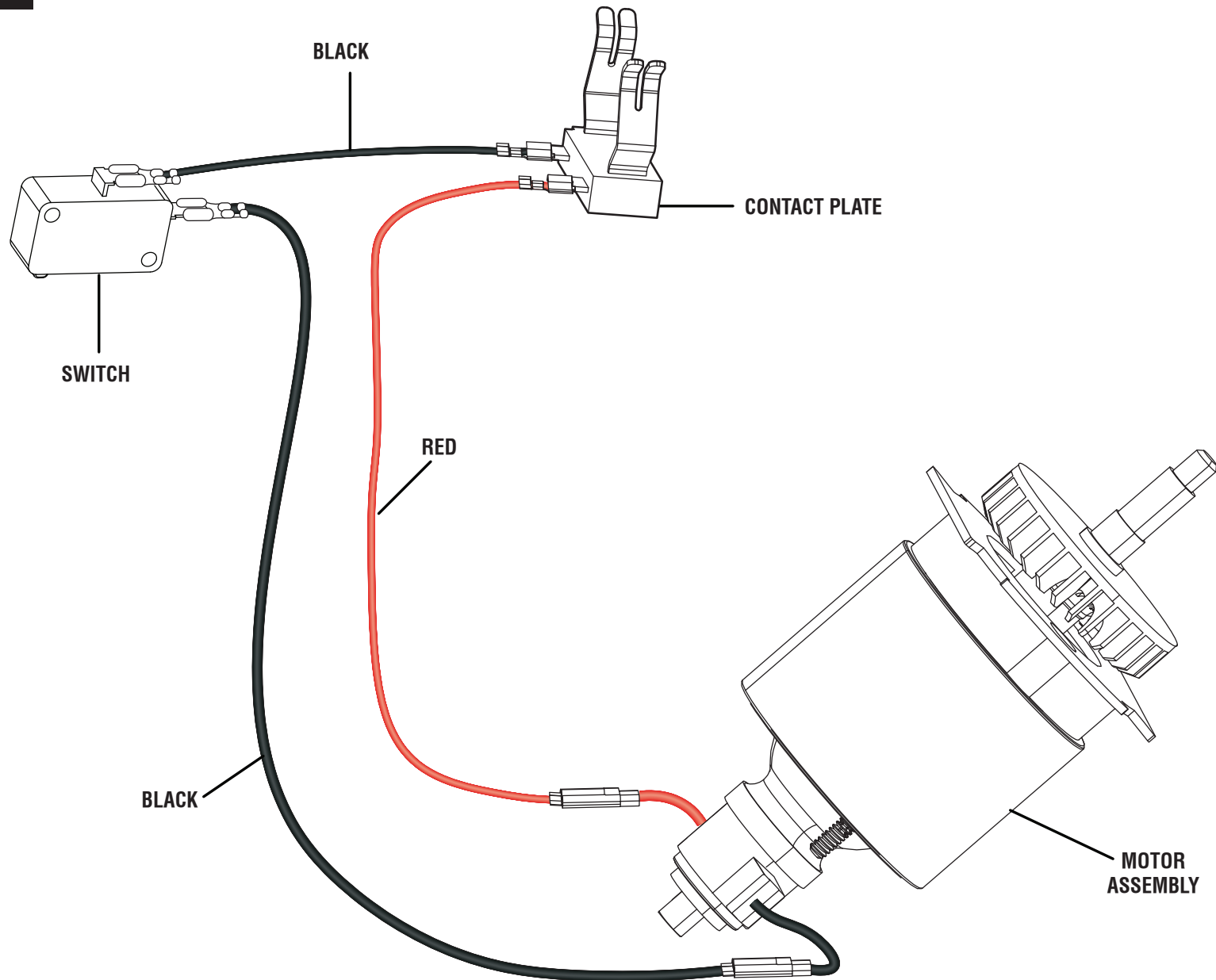


PGC21

PARTS LIST – FIGURE C

KEY NO.	PART NO.	DESCRIPTION	QTY.
1	089833003210	Clamp Assembly (Inc. Key No. 23)	1
2	089833001090	Rail	1
3	089833001091	Rail Support	2
4	089833001092	Hex Screw (M5 x 16 mm)	4
5	089833001093	Fence Knob	2
6	089833001094	Bevel Fence	1
7	089833001095	Stopper	2
8	089833001096	Screw (M4 x 25 mm)	2
9	089833001097	Rip Fence	1
10	089833001098	Screw (M4 x 8 mm)	8
11	089833001099	Left Throat Plate	2
12	089833001100	Right Throat Plate	2

KEY NO.	PART NO.	DESCRIPTION	QTY.
13	089833001101	Hex Screw (M6 x 20 mm)	4
14	089833001102	Table	1
15	089833001103	Foot Pad	5
16	089833001104	Fence Clip	4
17	089833001105	Screw (M4 x 10 mm)	5
18	089833001106	Push Stick	1
19	089833001107	Push Stick Bolt (M4 x 8 mm)	2
20	089833001108	Allen Key (H5 x 80 mm)	1
21	089833001109	Allen Key Clip	1
22	089833001110	Allen Key (H4 x 80 mm)	1
23	089833001111	Clamping Washer Pad	1



WIRING DIAGRAM