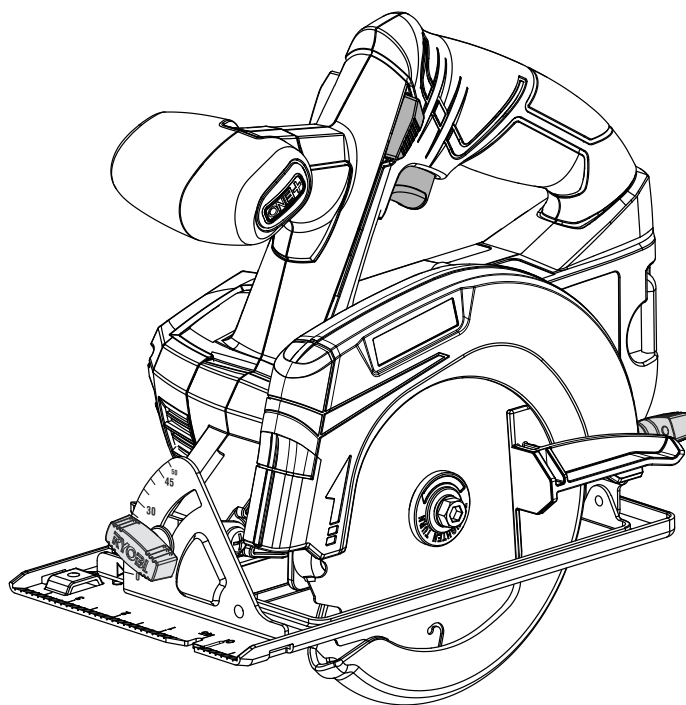


REPAIR SHEET

BRAND	RYOBI	DESCRIPTION
MODEL NO.	P505	

18 Volt 5-1/2 in. Circular Saw

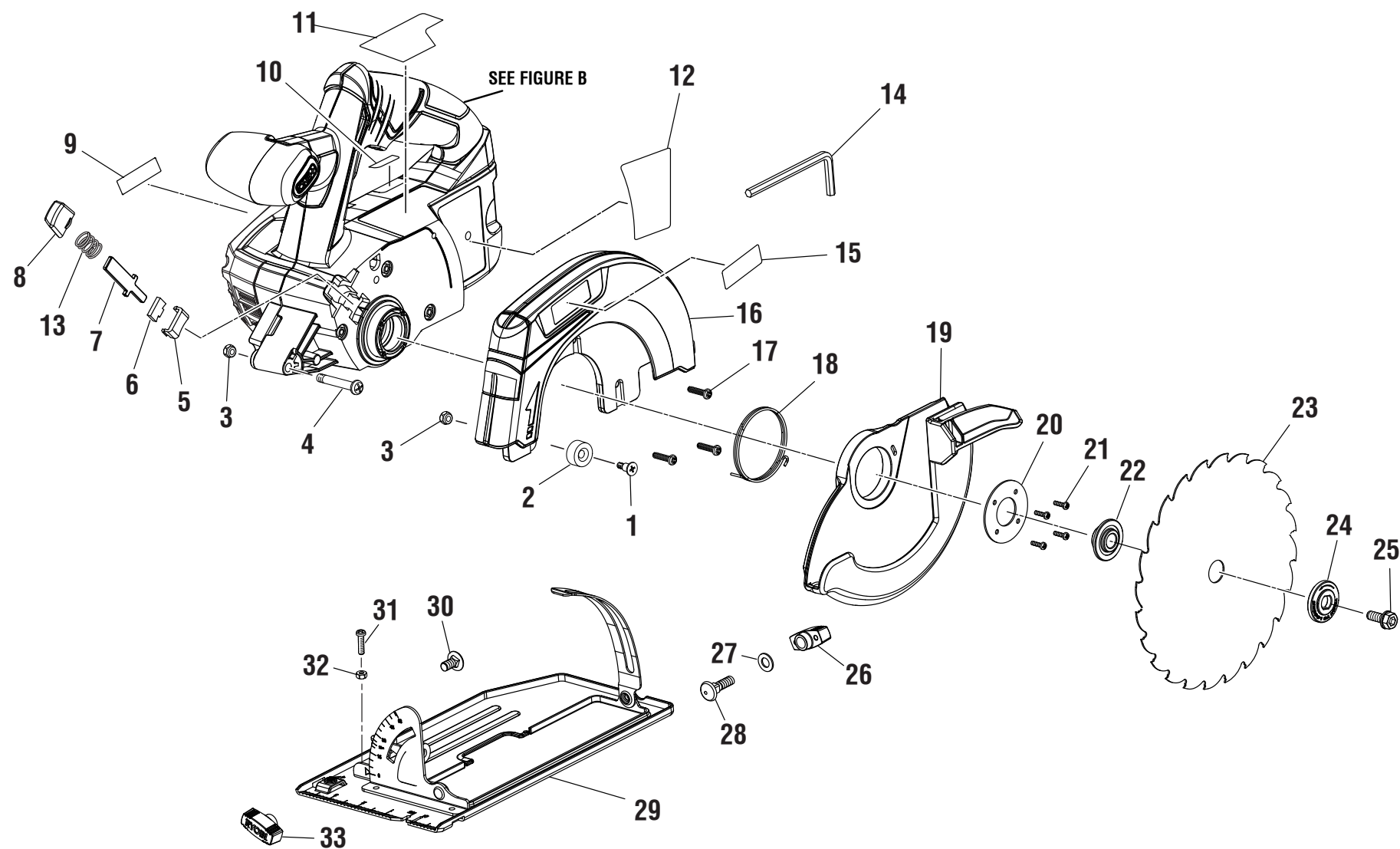


ONE WORLD TECHNOLOGIES, INC.

P.O. Box 1288, Anderson, SC 29622 ■ 1-800-525-2579 ■ www.ryobitools.com

4-4-23 (Rev:06)

The model number and manufacturing location will be found on a label attached to the product. Always mention this information in all communications regarding this product and when ordering parts.



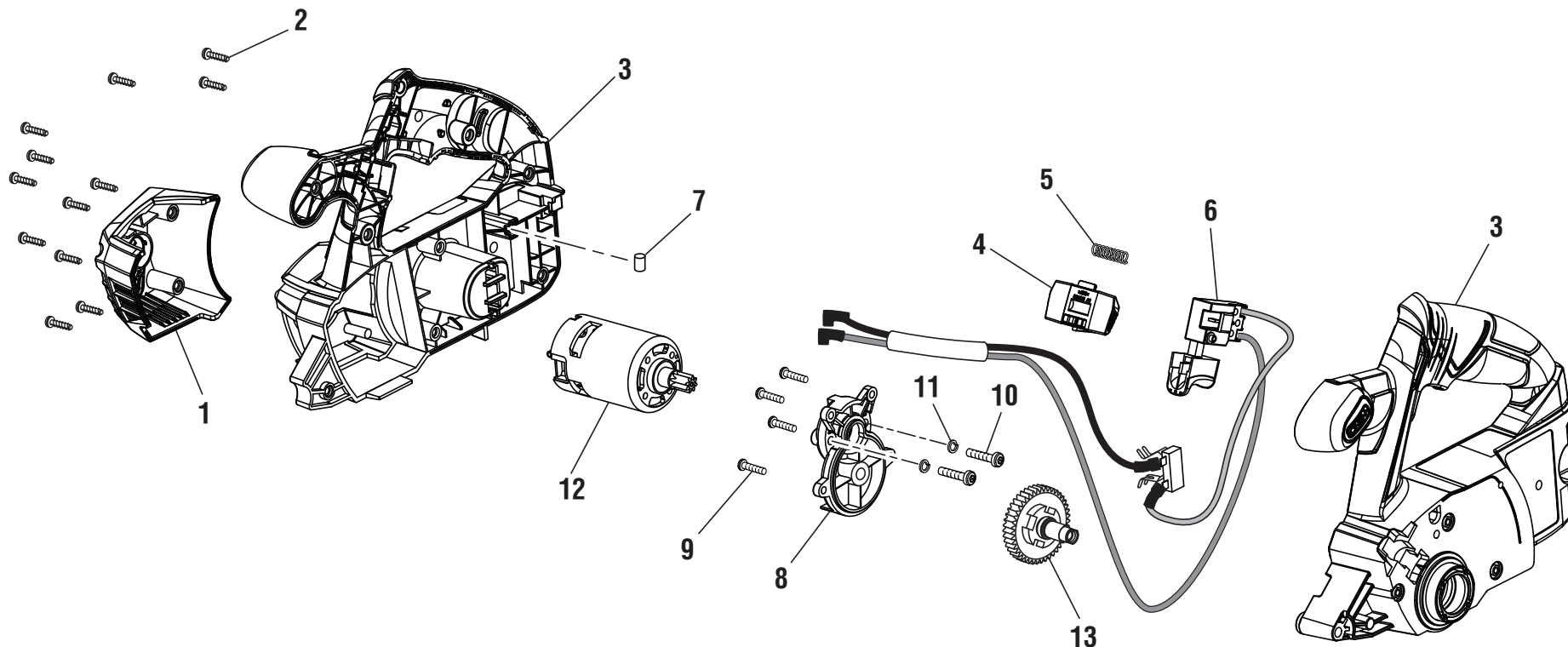
**P505****PARTS LIST — FIGURE A**

KEY NO.	PART NO.	DESCRIPTION	QTY.
1	660193006	Screw (M5 x 18 mm)	1
2	560990003	Rubber Stopper	1
3	670974003	Lock Nut (M5)	2
4	660145003	Screw (M5 x 40 mm, Pan Hd.)	1
5	523287001	Shaft Lock Holder	1
6	900303008	Sealing Pad	1
7	630191005	Shaft Lock Plate	1
8	523274001	Shaft Lock Button	1
9	941002194	Logo Label (End Cap)	1
10	940533055	Ryobi One+ Label	1
11-CN	941121478	Data Label	1
11-VN	941122653	Data Label	1
12	941120109	Warning Label	1
13	670056001	Compression Spring (Shaft Lock)	1
14	680002001	Hex Key (#5, 6 mm x 80 mm)	1
15	941002221	Logo Label	1
16	525914002	Upper Blade Guard	1
17	660024044	Screw (M4 x 16 mm, T20 Torx Pan Hd.)	3

KEY NO.	PART NO.	DESCRIPTION	QTY.
18	680672001	Torsion Spring	1
19	523124002	Lower Blade Guard	1
	523124001	Lower Blade Guard	1
20	680503003	Retainer Plate	1
21	660201004	Screw (M2.6 x 10 mm, Pan Hd.)	4
22	610276003	Inner Blade Clamp	1
23	670973029	Blade (5-1/2 in., 24T)	1
24	610121001	Outer Blade Clamp	1
25	660144005	Blade Screw (M6 x 16 mm, Left Hand Threads)	1
26	301124004	Depth Lock Knob	1
27	691992001	Washer (OD12 x ID6.4 x 1t)	1
28	661067002	Screw (M6 x 22 mm, Pan Hd.)	1
29	304721016	Base Assembly (Incl. Key Nos. 30-33)	1
30	660142008	Screw (M6 x 12 mm, Pan Hd.)	1
31	660212053	Screw (M4 x 16 mm, Pan Hd.)	1
32	680022003	Hex Nut (M4)	1
33	301124011	Bevel Lock Knob	1
	Not Shown:		
	990000625	Operator's Manual	

If a key number has multiple part numbers, please order the part that corresponds with the country of origin shown on the product's data label.

CN = China VN = Vietnam



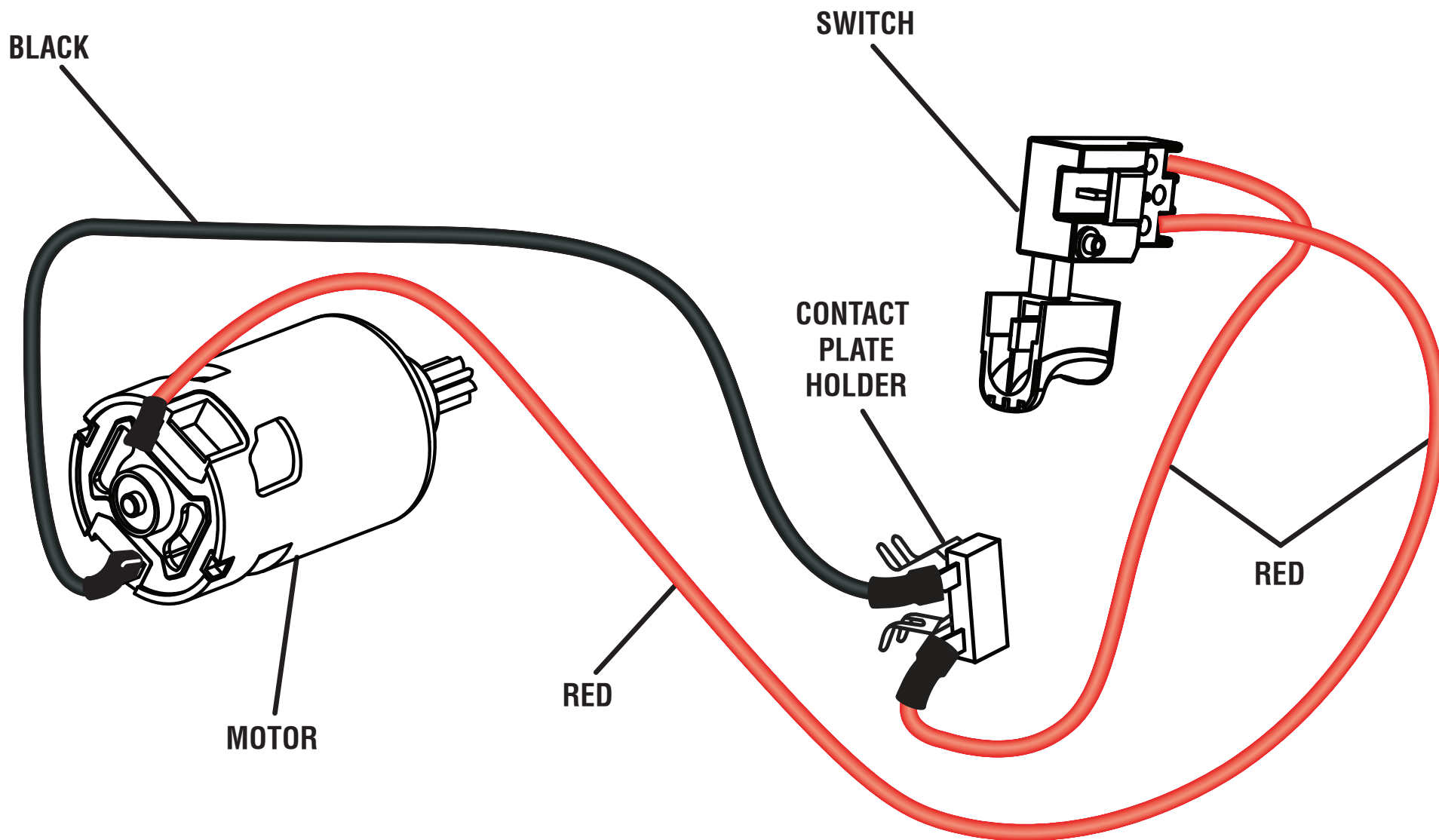
PARTS LIST — FIGURE B

KEY NO.	PART NO.	DESCRIPTION	QTY.
1	523123001	End Cap	1
2	660024044	Screw (M4 x 16 mm, T20 Torx Pan Hd.)	12
3	202052001	Housing Assembly	1
4	523141001	Lock-Off Button	1
5	672552001	Spring	1
6	270016162	Switch w/Wiring Assembly	1
7	560219006	Hex Key Plug	1

KEY NO.	PART NO.	DESCRIPTION	QTY.
8	640403008	Gear Box Assembly	1
9	660208049	Screw (M4 x 22 mm, Pan Hd.)	4
10	660212004	Screw (M4 x 16 mm, T25 Torx Pan Hd.)	2
11	670030004	Washer (OD7.2 x ID4.1 x 1.1t)	2
12-CN	230163006	Motor w/Pinion Assembly	1
12-VN	206163004	Motor w/Pinion Assembly	1
13	304522001	Output Shaft w/Gear Assembly	1

If a key number has multiple part numbers, please order the part that corresponds with the country of origin shown on the product's data label.

CN = China VN = Vietnam



WIRING DIAGRAM