

REPAIR SHEET

BRAND

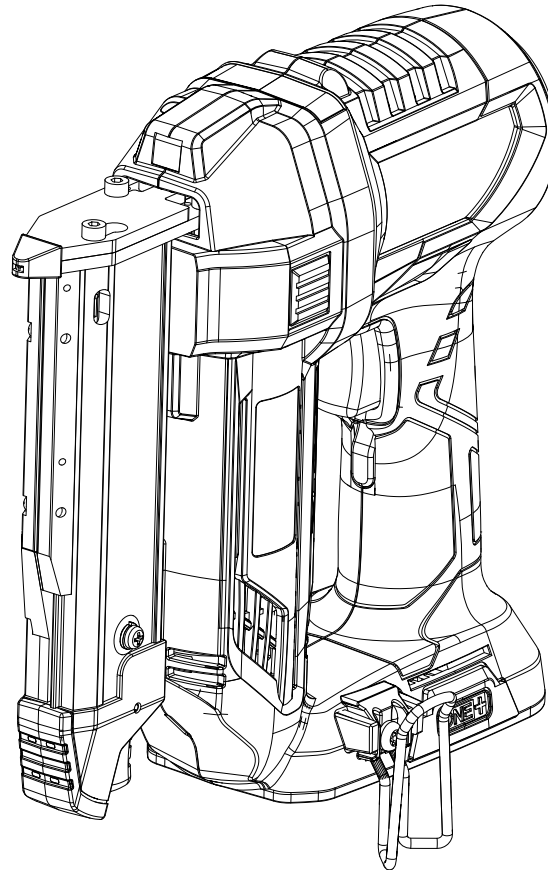
RYOBI

DESCRIPTION

18 Volt Pin Nailer

MODEL NO.

P318



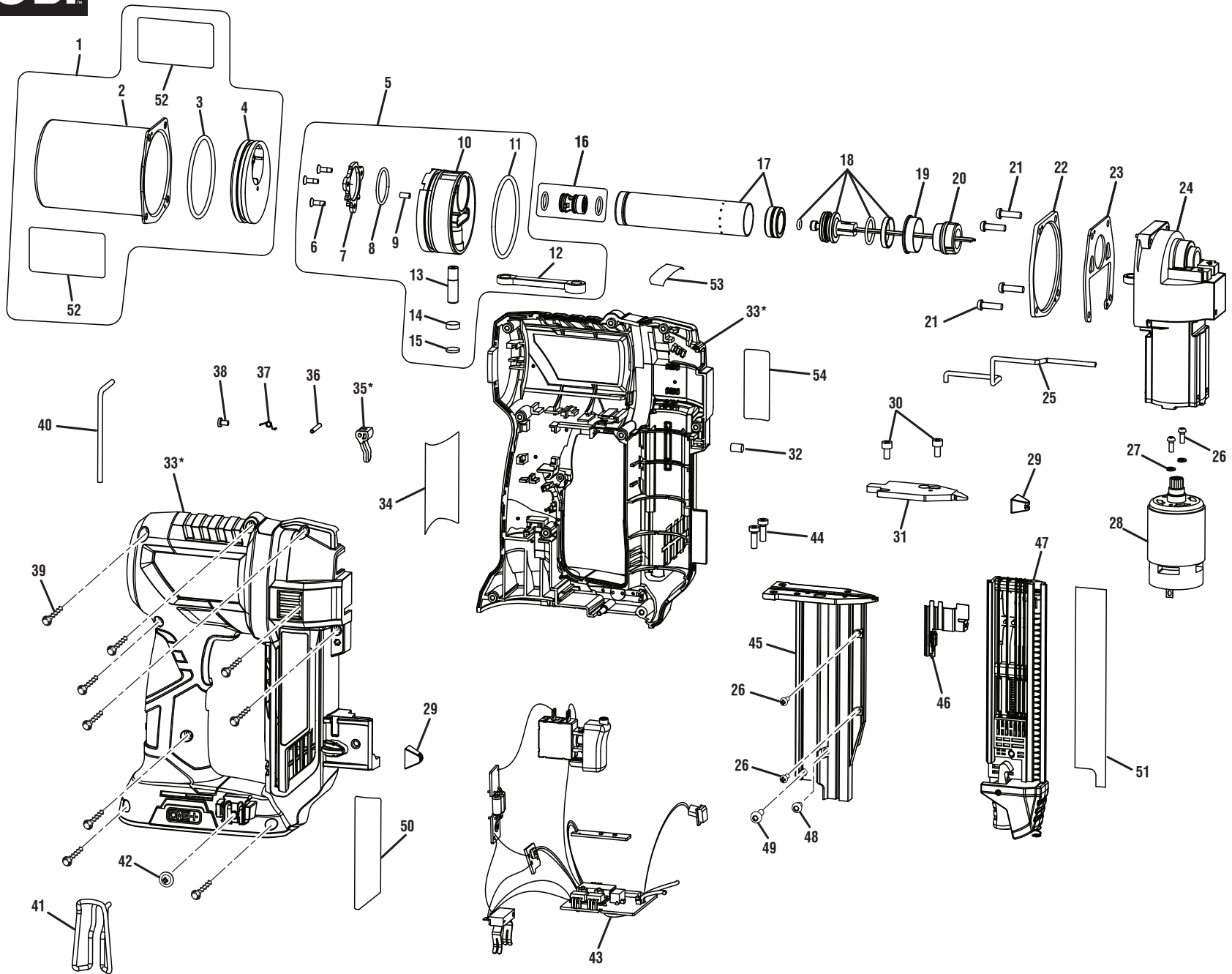
TTI CONSUMER POWER TOOLS, INC.

P.O. Box 1288, Anderson, SC 29622 ■ 1-800-525-2579 ■ www.ryobitools.com

2-21-22 (Rev:08)

The model number and manufacturing location will be found on a label attached to the product. Always mention this information in all communications regarding this product and when ordering parts.

RYOBI P318



*Prior to Serial No. CS19111N220253, key nos. 33 and 35 must be replaced together.



P318

PARTS LIST

KEY NO.	PART NO.	DESCRIPTION	QTY.
1	204690001	Compress Cylinder & Valve Holder (Inc. Key Nos. 2-4 & 52)	1
2	639415001	Compress Cylinder	1
3	564427001	O-Ring	1
4	533235001	Valve Holder	1
5	204691001	Compress Piston Assembly (Inc. Key Nos. 6-15)	1
6	660204008	Screw (M3 x 10 mm)	3
7	533271001	Piston Cover	1
8	564430001	O-Ring	1
9-CN	525502001	Filter	1
9-VN	525502002	Filter	1
10	533231001	Compress Piston	1
11	564432001	O-Ring	1
12	613414002	Connecting Rod	1
13	622177001	Connecting Shaft	1
14	693291001	Magnet Plate	1
15	524752001	Washer	1
16	204692001	Valve Shaft Assembly	1
17	312805001	Drive Cylinder w/Magnet	1
18	206679001	Drive Blade Assembly	1
19	564418001	Check Valve	1
20	564416001	Bumper	1
21	661923001	Screw (M4 x 15 mm)	4
22	639394001	Fix Plate	1
23	533544001	Check Valve Stopper	1

KEY NO.	PART NO.	DESCRIPTION	QTY.
24	204694001	Gear Assembly	1
25	639413001	Dry Fire Lockout Link	1
26	660211014	Screw (M3 x 8 mm)	4
27	671235003	Washer	2
28	206680001	Motor Assembly	1
29	533248001	No Mar Pad	2
30	662399001	Screw (M4 x 7.5 mm)	2
31	312913001	Drive Guide Cover	1
32	560219003	Rubber Stopper	1
33-CN*	204696003	Housing Assembly (Inc. Key Nos. 34, 50, & 53-55)	1
33-VN*	204696005	Housing Assembly (Inc. Key Nos. 34, 50, & 53-55)	1
34	941007069	Fastener Label	1
35*	533237002	Secondary Trigger	1
36	673739001	Pin	1
37	696302001	Torsion Spring	1
38	564478001	Contact Pad	1
39	660031029	Screw (M3.5 x 16 mm)	9
40	639434001	Hex Key Wrench (M3 x 26 mm x 63 mm)	1
41	639417001	Belt Hook	1
42	662645001	Screw (M4 x 6 mm)	1
43-CN	204697001	Trigger and Circuit Board Assembly	1
43-VN	204697004	Trigger and Circuit Board Assembly	1

KEY NO.	PART NO.	DESCRIPTION	QTY.
44	661233001	Screw (M4 x 12 mm)	2
45	204698001	Magazine Support and Drive Guide Assembly (Inc. Key No. 26)	1
46	204699001	Nail Pusher Assembly	1
47	204700001	Magazine Assembly (Inc. Key No. 51)	1
48	660212001	Screw (M4 x 6 mm)	1
49	661064001	Screw (M4 x 12 mm)	1
50-CN	941121875	Data Label	1
50-VN	941123661	Data Label	1
51	941120319	Nail Slide Warning Label	1
52	941007070	Airstrike Label	2
53	941007068	LED Light Label	1
54	940114178	Logo Label	1
	Not Shown:		
	204702001	Seal Kit	
	204886001	1 in. Nails (Pack of 500)	
	995000227	Operator's Manual (CN – 961152787) (VN – 961153327)	

*Prior to Serial No. CS19111N220253, key nos. 33 and 35 must be replaced together.

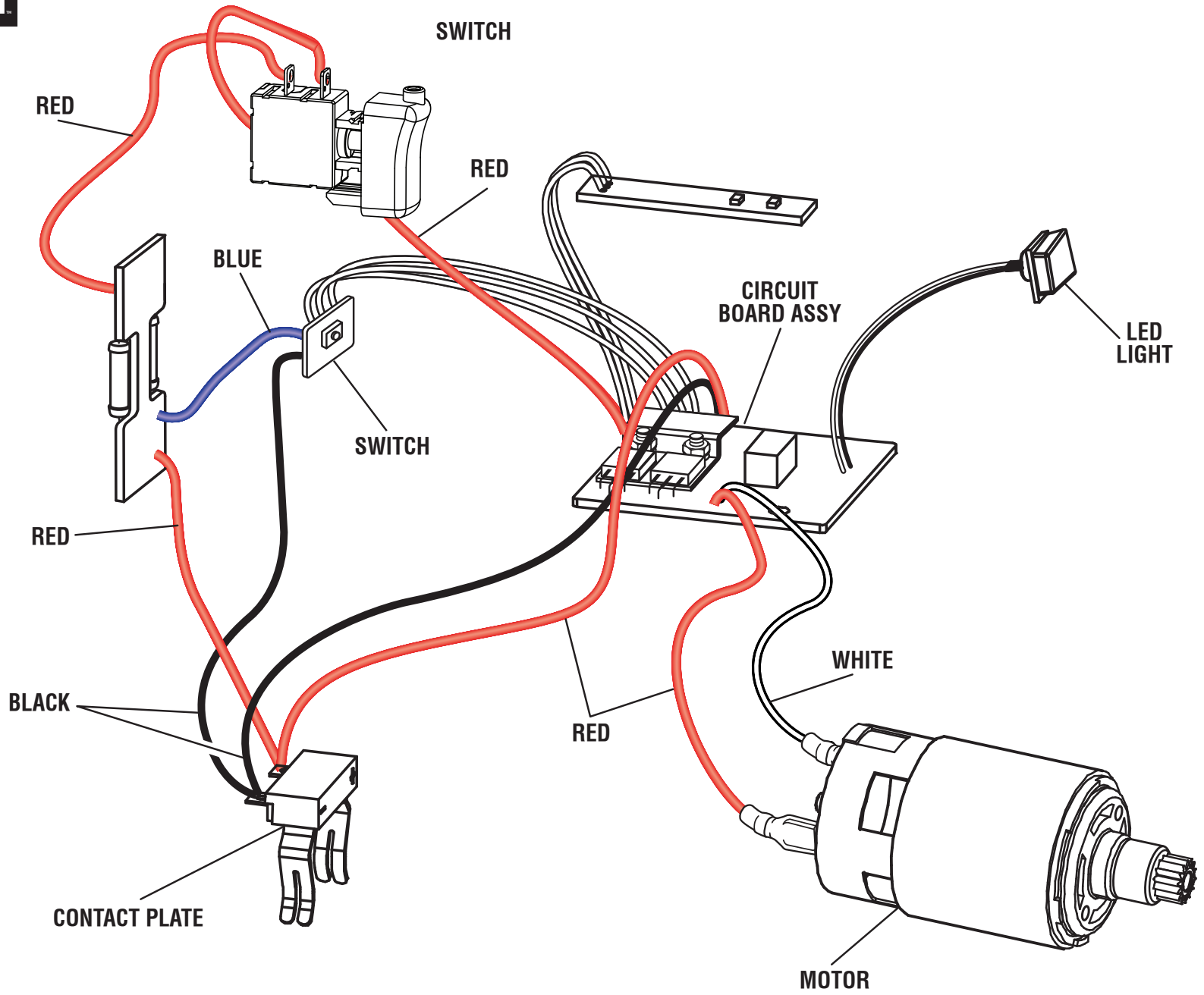
If a key number has multiple part numbers, please order the part that corresponds with the country of origin shown on the product's data label.

CN = China

VN = Vietnam



P318



WIRING DIAGRAM