

REPAIR SHEET

BRAND

RYOBI

DESCRIPTION

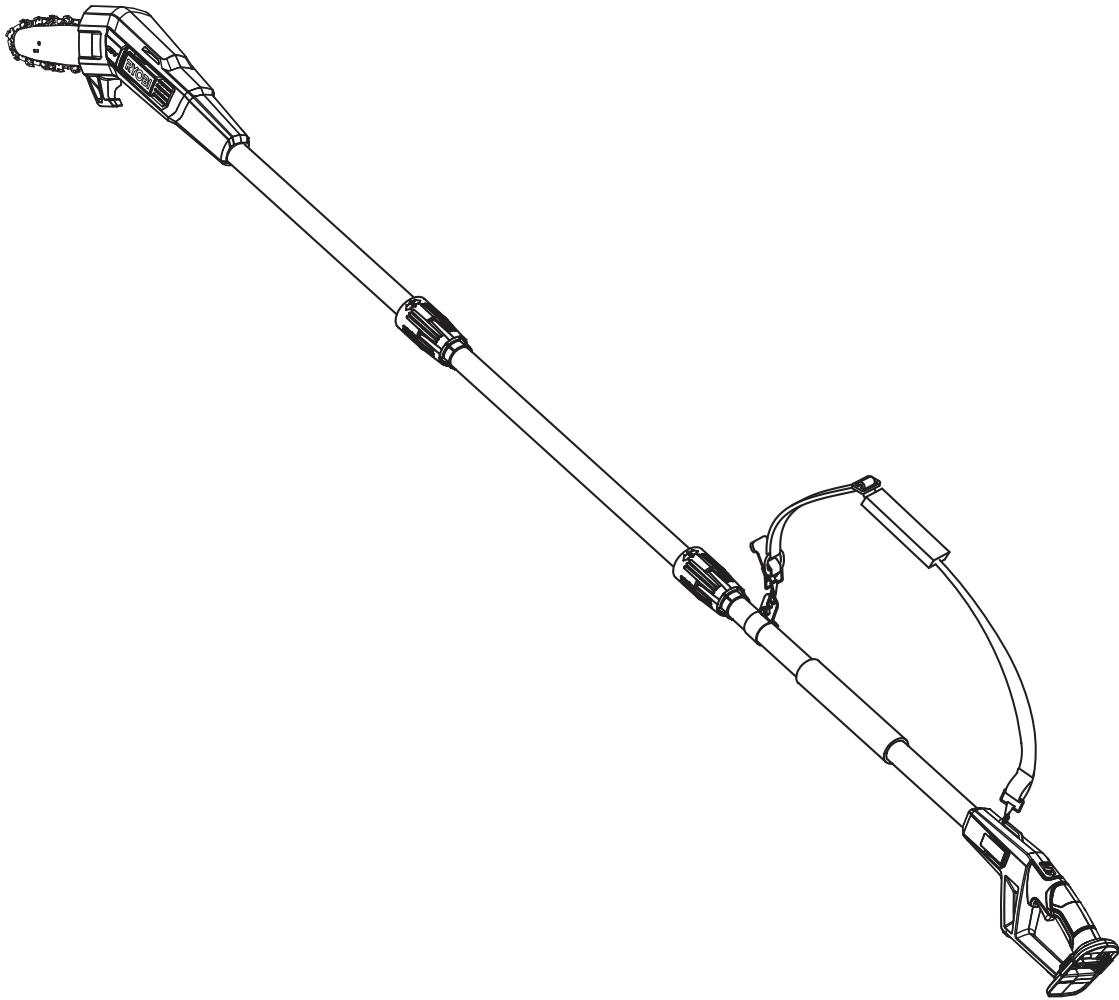
18 Volt Pole Saw

MODEL NO.

P2501

MFG. NO.

107581001

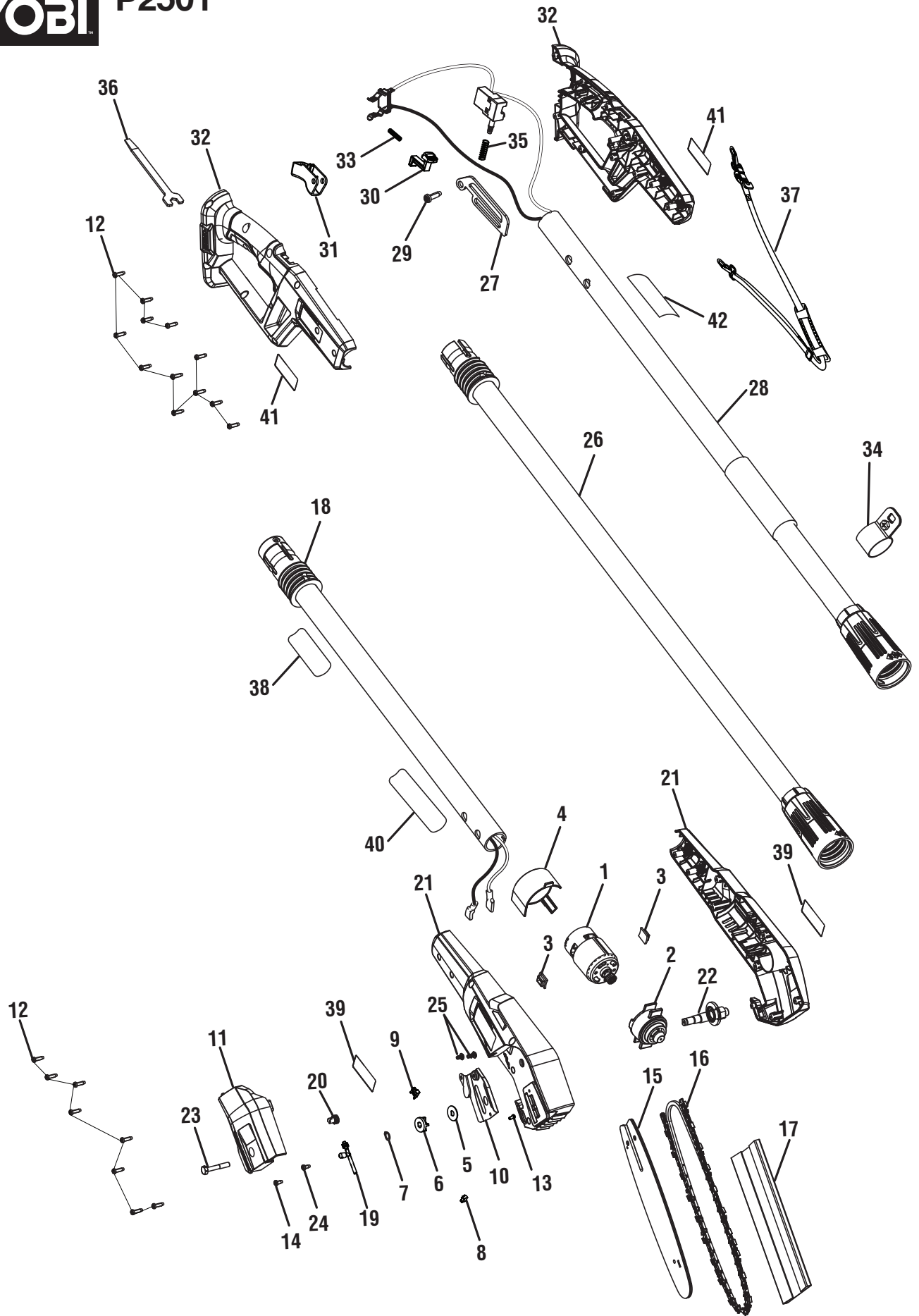


TTI OUTDOOR POWER EQUIPMENT, INC.

P.O. Box 1288, Anderson, SC 29622 ■ 1-800-525-2579 ■ www.ryobitools.com

12-8-21 (Rev:02)

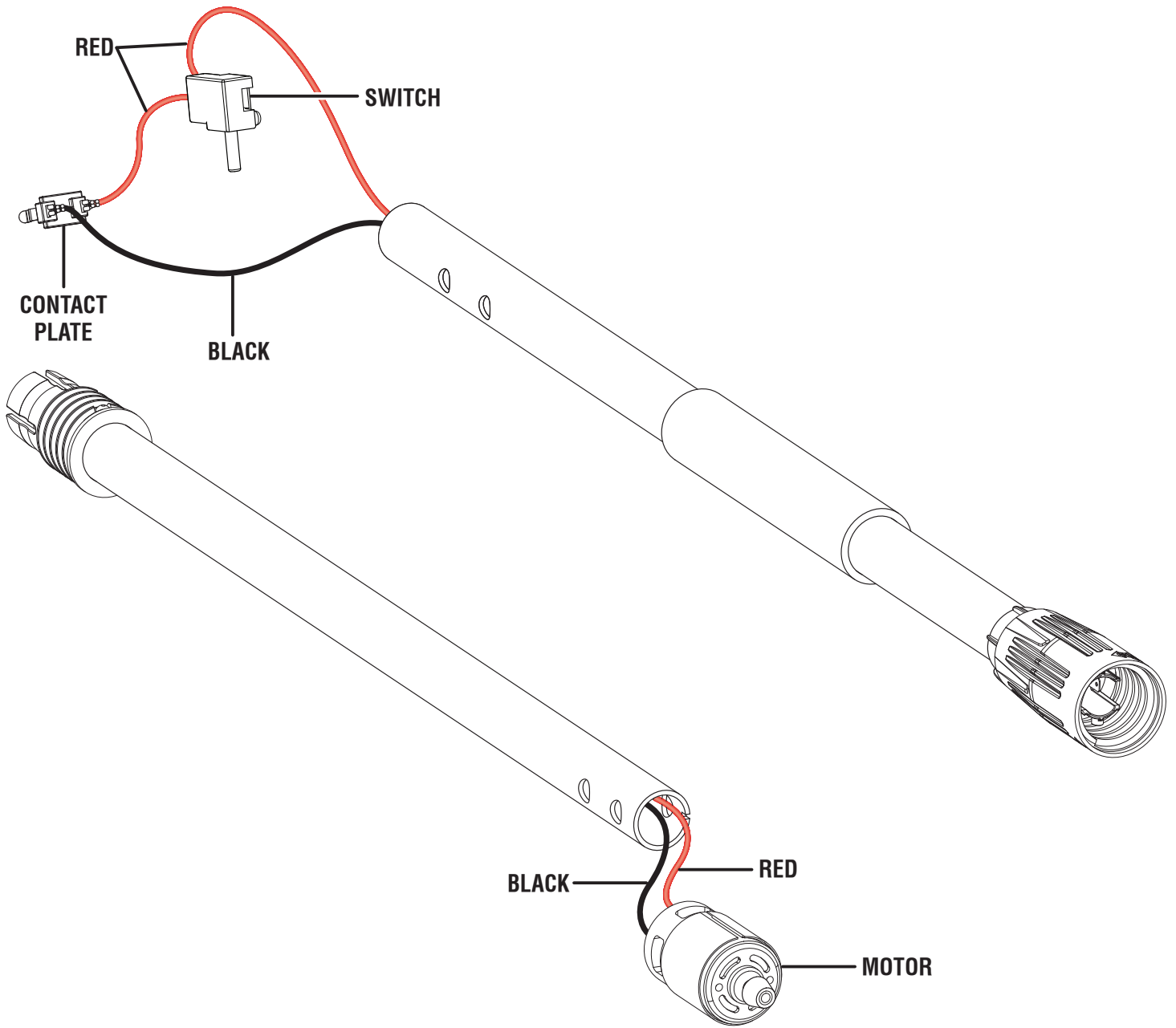
The model number and manufacturing location will be found on a label attached to the product. Always mention this information in all communications regarding this product and when ordering parts.



PARTS LIST

KEY NO.	PART NO.	DESCRIPTION	QTY.
1	316686001	Motor and Pinion Assembly	1
2	205514001	Output Gear Assembly	1
3	570115001	Rubber Plate	2
4	541930001	Volute Cover	1
5	690733001	Cover Plate	1
6	610323001	Sprocket	1
7	670608002	Retaining Ring	1
8	541509001	Small Pressure Plate	1
9	541544001	Big Pressure Plate	1
10	674154001	Guide Plate	1
11	541934001	Chain/Bar Cover	1
12	661817001	Screw (M4 x 13.5 mm, T15 Torx Pan Hd.)	20
13	662408001	Screw (M3 x 8 mm, T15 Torx Pan Hd.)	1
14	660005006	Screw (M3 x 10 mm)	1
15	316670001	8 in. Guide Bar	1
16	682502001	8 in. Saw Chain	1
17	518405002	Scabbard	1
18	205510001	Upper Pole Assembly (Inc Key Nos. 38 & 40)	1
19	315118004	Adjustment Screw Assembly	1
20	610624004	Bar Adjustment Gear	1
21	205511001	Motor Housing Assembly (Inc. Key No. 39)	1
22	316943001	Output Shaft Assembly	1

KEY NO.	PART NO.	DESCRIPTION	QTY.
23	663095001	Screw w/Spring Washer (M6 x 35 mm)	1
24	662364001	Screw (M4 x 8 mm, T15 Torx Pan Hd.)	1
25	660922002	Screw (M4 x 7 mm, T20 Torx Pan Hd.)	2
26	310980002	Middle Pole Assembly	1
27	634052001	Shoulder Strap Hook	1
28	205512001	Lower Pole Assembly (Inc. Key Nos. 34 & 42)	1
29	660960002	Screw (M3 x 8.5 mm, T10 Torx Pan Hd.)	1
30	541725002	Lock Off	1
31	541929001	Trigger	1
32	205513001	Rear Handle Assembly (Inc. Key No. 41)	1
33	694143001	Spring	1
34	316769001	Clamp Assembly	1
35	679055008	Spring	1
36	639255002	Wrench	1
37	308319004	Harness Assembly	1
38	941588711	Data Label	1
39	940705493	Motor Housing Logo Label	2
40	941851098	Warning Label (Spanish/French)	1
41	941588712	Handle Logo Label	2
42	941588713	Danger Icon Warning Label	1
	Not Shown:		
	998000281	Operator's Manual	



WIRING DIAGRAM