

# REPAIR SHEET

BRAND

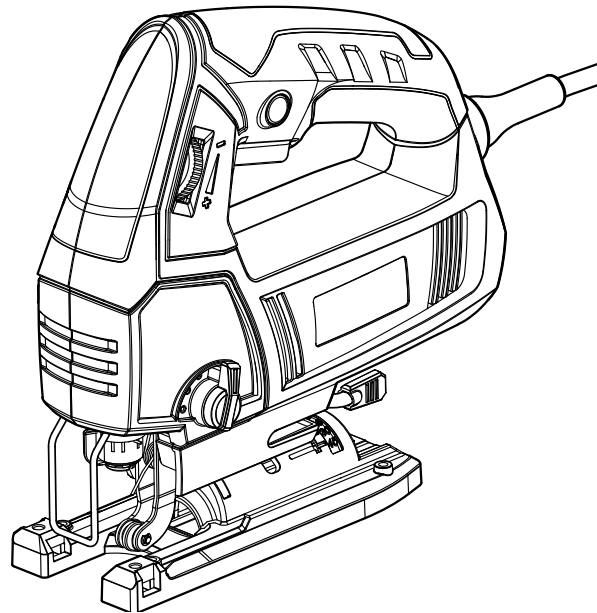
**RYOBI**

DESCRIPTION

**Orbital Jig Saw**

MODEL NO.

**JS481LGD**



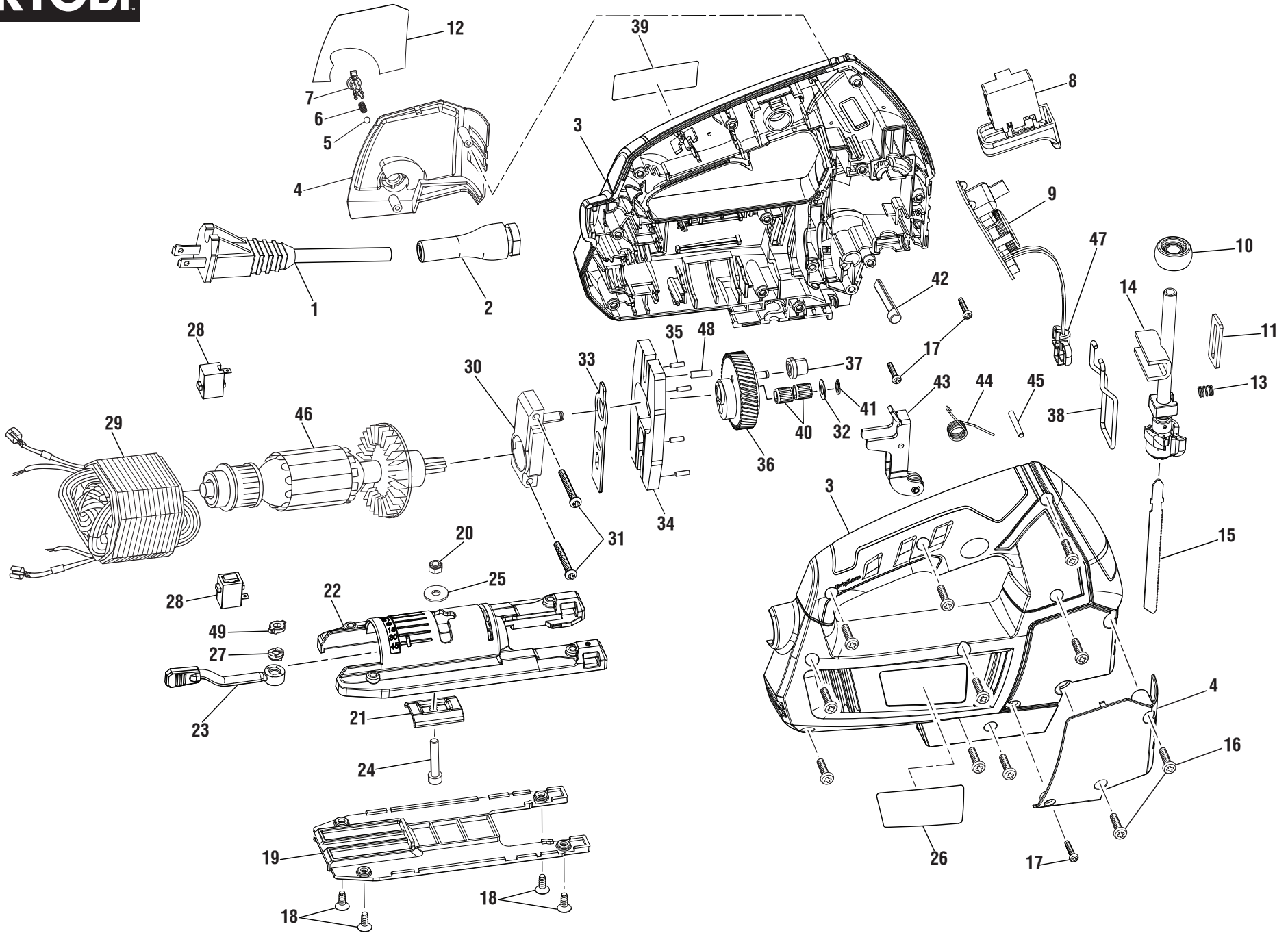
**ONE WORLD TECHNOLOGIES, INC.**

P.O. Box 1288, Anderson, SC 29622 ■ 1-800-525-2579 ■ [www.ryobitools.com](http://www.ryobitools.com)

9-12-20 (Rev:01)

*The model number and manufacturing location will be found on a label attached to the product. Always mention this information in all communications regarding this product and when ordering parts.*

# RYOBI JS481LGD

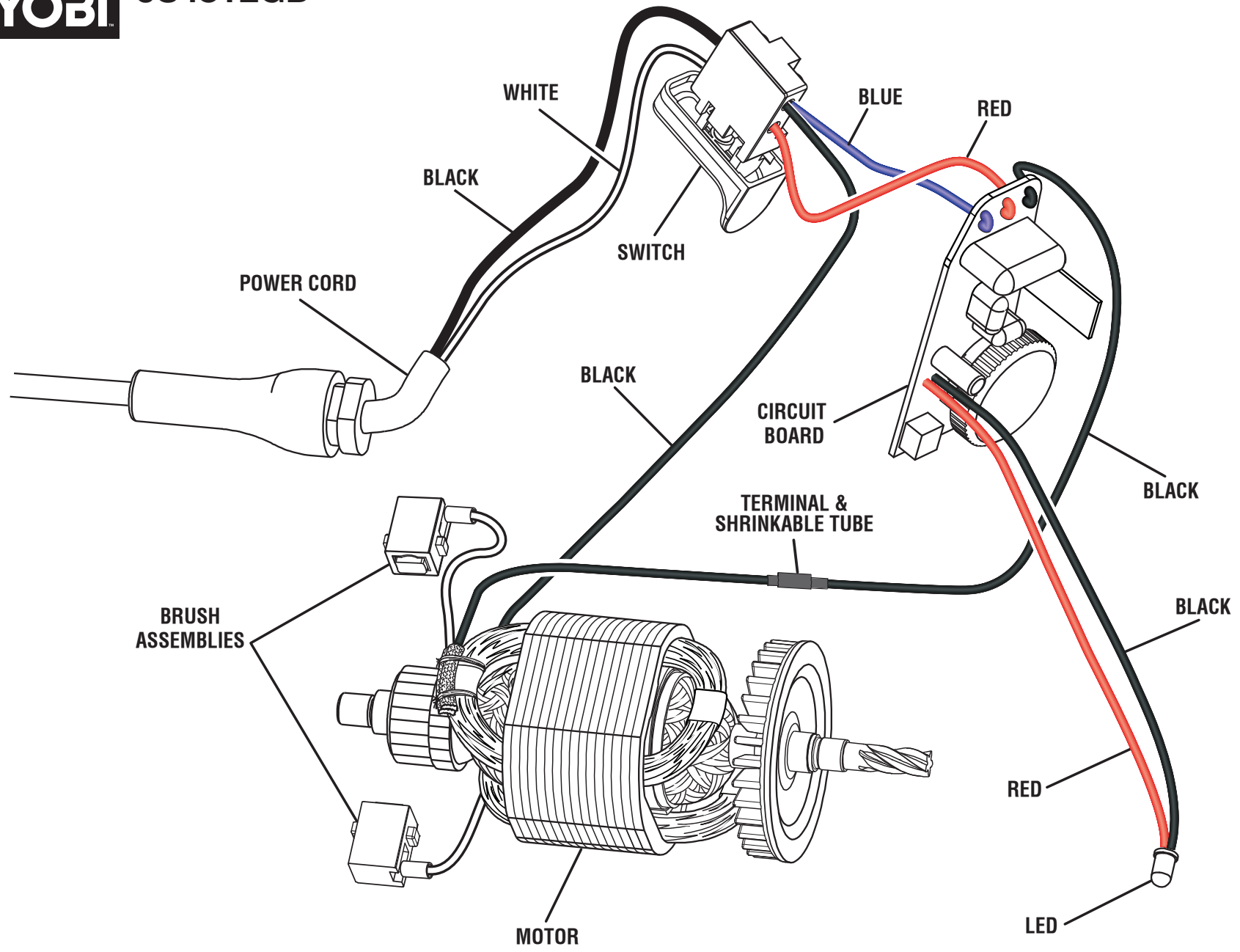


### PARTS LIST

| KEY NO. | PART NO.     | DESCRIPTION                    | QTY. |
|---------|--------------|--------------------------------|------|
| 1       | 039887001034 | Power Cord                     | 1    |
| 2       | 039887001033 | Bend Relief                    | 1    |
| 3       | 039887002205 | Housing Assembly               | 1    |
| 4       | 039887001206 | Cover Assembly                 | 1    |
| 5       | 039452001069 | Steel Ball                     | 1    |
| 6       | 039452001068 | Spring                         | 1    |
| 7       | 039887001022 | Orbital Adjustment Knob        | 1    |
| 8       | 039887001032 | Switch Assembly                | 1    |
| 9       | 039887001031 | Circuit Board Assembly         | 1    |
| 10      | 039887001008 | Bushing                        | 1    |
| 11      | 039887001007 | Guide Plate                    | 1    |
| 12      | 941001095    | Orbital Label                  | 1    |
| 13      | 039887001005 | Spring                         | 1    |
| 14      | 039887001203 | Saw Bar Assembly               | 1    |
| 15      | 039887001001 | Wood Cutting Blade             | 1    |
| 16      | 039887001026 | Screw (ST4.2 x 16 mm, Pan Hd.) | 11   |
| 17      | 039887001028 | Screw (ST3.0 x 10 mm)          | 3    |
| 18      | 039887001038 | Screw (M4 x 8 mm)              | 4    |
| 19      | 039887001039 | Base Plate                     | 1    |
| 20      | 039887001047 | Insert Nut (M5)                | 1    |
| 21      | 039887001041 | Clamp Pad                      | 1    |
| 22      | 039887001042 | Saw Base                       | 1    |
| 23      | 039887001207 | Base Adjustment Lever Assembly | 1    |
| 24      | 039887001040 | Positive Stop Screw            | 1    |
| 25      | 039887001051 | Washer (OD15.0 x ID5.3 x 1.3t) | 1    |
| 26      | 03988700201K | Data Label                     | 1    |
| 27      | 039887001044 | Fix Wedge                      | 1    |

| KEY NO. | PART NO.          | DESCRIPTION                   | QTY. |
|---------|-------------------|-------------------------------|------|
| 28      | 039887001208      | Brush Assembly                | 2    |
| 29      | 039887001204      | Motor Assembly                | 1    |
| 30      | 039887001016      | Bearing Plate Assembly        | 1    |
| 31      | 039887001017      | Screw (ST4.2 x 30 mm)         | 2    |
| 32      | 039887001010      | Washer (OD12 x ID6 x 0.5t)    | 1    |
| 33      | 039887001015      | Drive Plate                   | 1    |
| 34      | 039887001014      | Counterbalance                | 1    |
| 35      | 039887001013      | Pin (Φ2.0 x 6.5)              | 4    |
| 36      | 039887001011      | Gear Assembly                 | 1    |
| 37      | 039450001013      | Drive Sleeve                  | 1    |
| 38      | 039887001030      | Guard Wire                    | 1    |
| 39      | 941002109         | Logo Label                    | 1    |
| 40      | 039450001018      | Needle Bearing                | 2    |
| 41      | 039887001009      | Retaining Ring                | 1    |
| 42      | 039816001064      | Orbital Detent Button         | 1    |
| 43      | 039887001202      | Blade Guide Assembly          | 1    |
| 44      | 039887001037      | Torsion Spring                | 1    |
| 45      | 039452001050      | Pin                           | 1    |
| 46      | 039887001209      | Armature with Bearings        | 1    |
| 47      | 039887001029      | LED Lens                      | 1    |
| 48      | 039887001012      | Pin                           | 1    |
| 49      | 039887001046      | Rotary Wedge                  | 1    |
|         | <b>Not Shown:</b> |                               |      |
|         | 039076003101      | Optional Edge Guide Kit       |      |
|         | 301009001         | Optional Dust Port Assembly   |      |
|         | 988000859         | Operator's Manual (961031002) |      |

**▲ WARNING:** Improper repair of a double insulated tool can result in damage to the double insulation system possibly causing electrical shock or electrocution. Any repairs requiring disassembly of your tool requires safety testing and should only be performed by a RYOBI Authorized Service Center. For the service center nearest you call 1-800-525-2579.



**WIRING DIAGRAM**