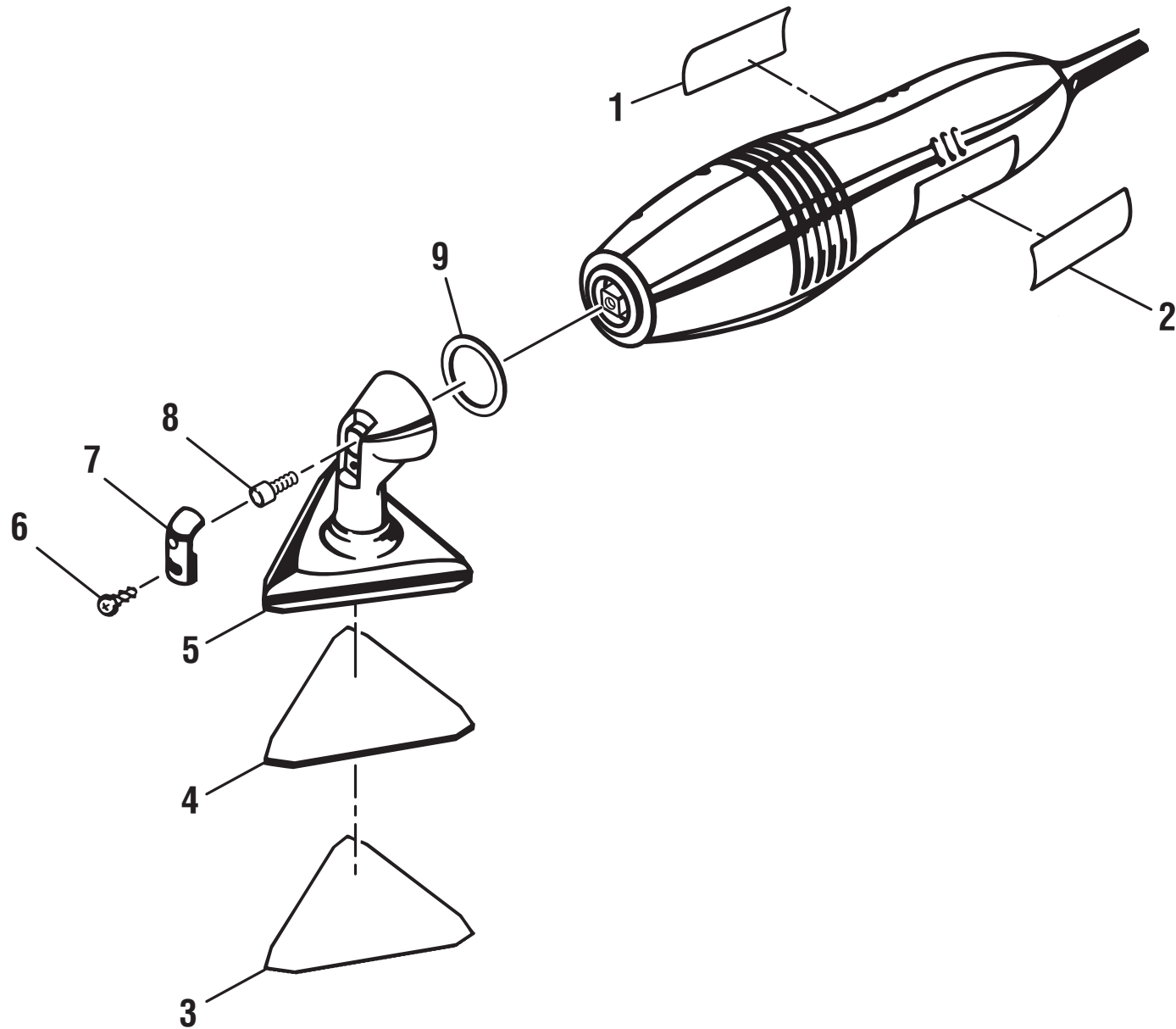


**RYOBI
DETAIL SANDER
MODEL NUMBER
DS11008G
REPAIR SHEET**

RYOBI DETAIL SANDER – MODEL NUMBER DS11008G



⚠ WARNING: The foot cover, key number 7, insulates the cap screw, key number 8, making it part of the double insulated system. Therefore, it must always be replaced when replacing parts or making repairs to this tool.

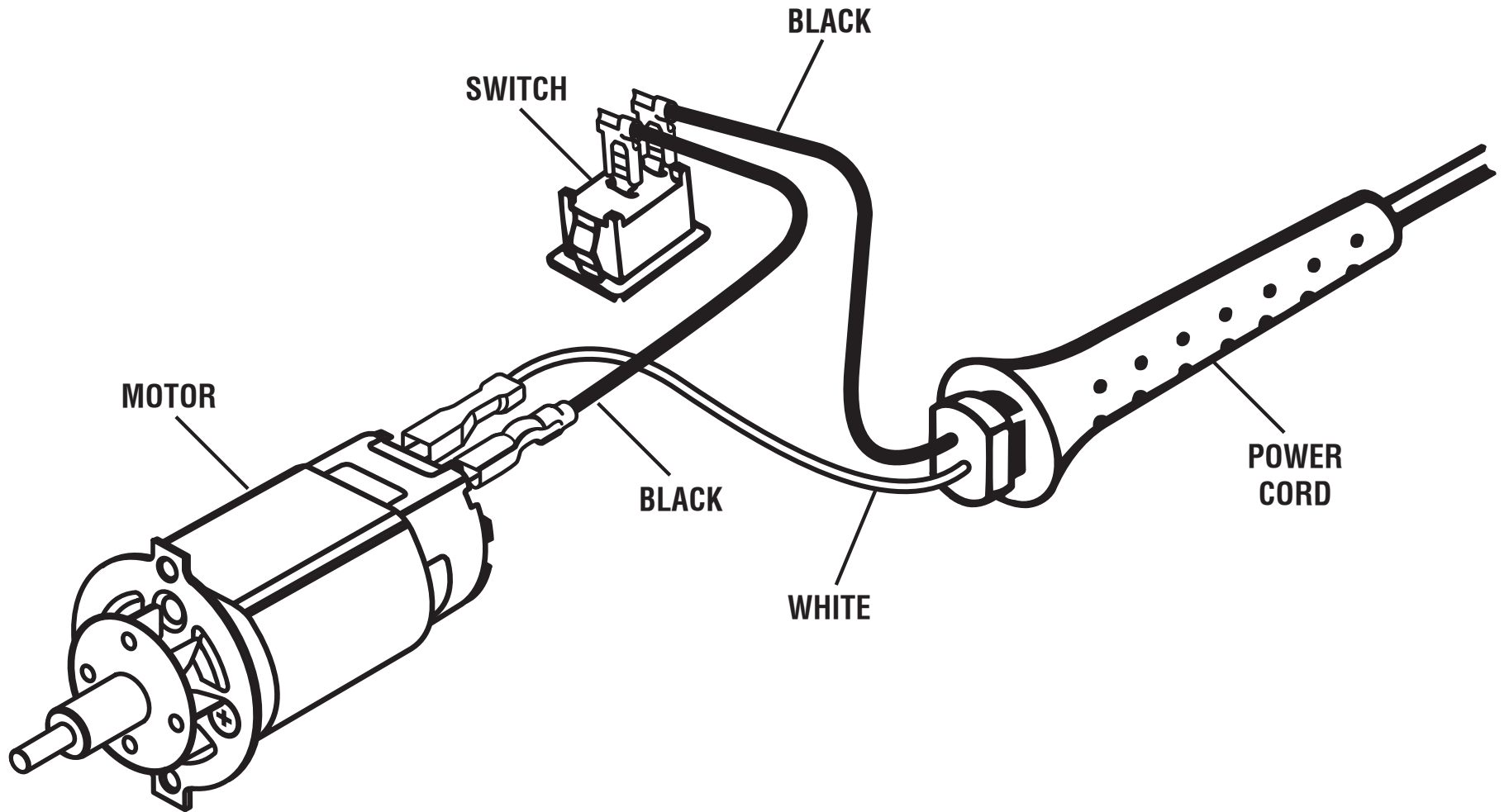
RYOBI DETAIL SANDER – MODEL NUMBER DS11008G

The model number will be found on a label attached to the motor housing. Always mention the model number in all correspondence regarding your **DETAIL SANDER** or when ordering repair parts.

PARTS LIST

| KEY NO. | PART NUMBER | DESCRIPTION | QTY |
|---------|------------------|---|-----|
| 1 | 941121222 | Data Plate | 1 |
| 2 | 941002107 | Logo Label | 1 |
| 3 | 300552006 | Sandpaper | 1 |
| 4 | 560716001 | Felt Pad..... | 1 |
| 5 | 300550004 | Pad Assembly (Inc. Key No. 4) | 1 |
| 6 | 660162001 | Screw (#4-24 x 3/8 in. Pan Hd.)..... | 1 |
| 7 | 550359002 | Foot Cover | 1 |
| 8 | 660169009 | Cap Screw (#8-32 x 7/16 in. Hex Socket) | 1 |
| 9 | 560636001 | Rubber Washer | 1 |
| | NOT SHOWN | | |
| | 972000876 | Owner's Manual (961152217) | |
| | 4-14-15 | | |
| | (Rev:01) | | |

 **WARNING:** Improper repair of a double insulated tool can result in damages to the double insulation system possibly causing electrical shock or electrocution. Any repairs requiring disassembly of your tool requires safety testing and should only be performed by a Ryobi Authorized Service Center or other qualified service organization.



WIRING DIAGRAM