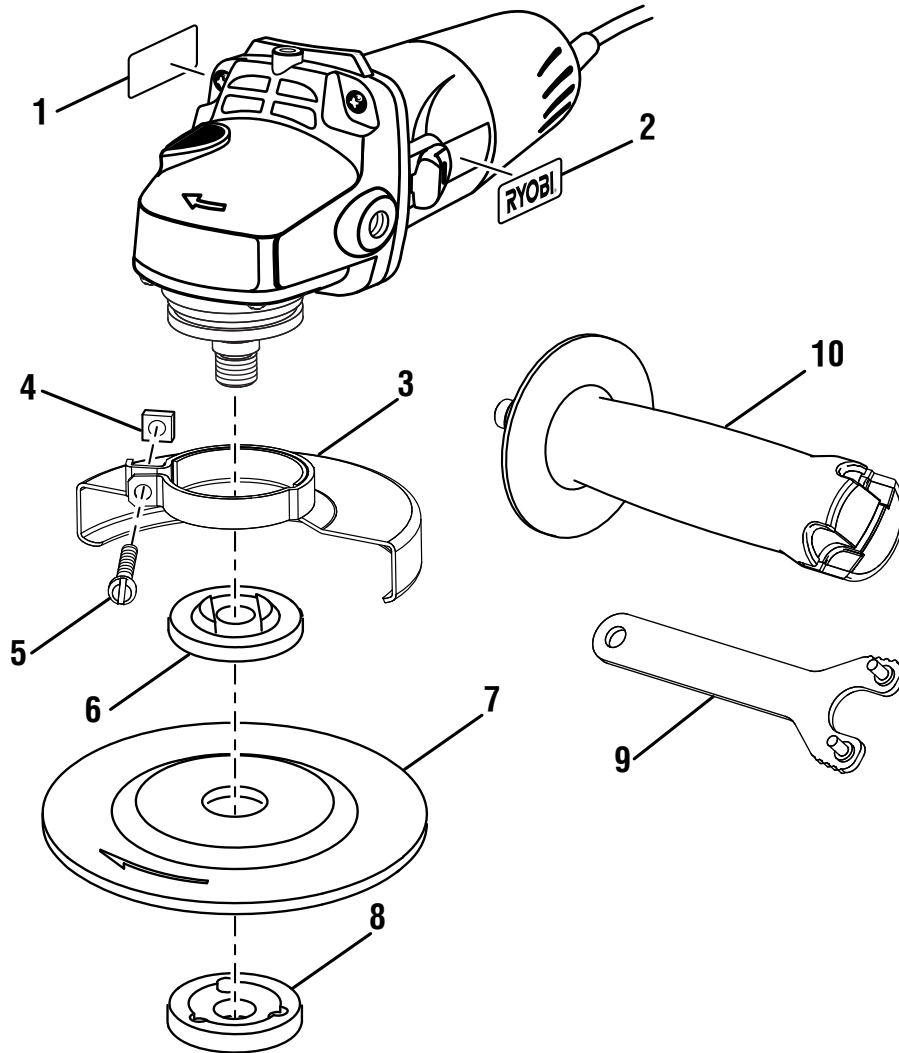


**RYOBI  
ANGLE GRINDER  
MODEL NO. AG4031G  
REPAIR SHEET**

## RYOBI ANGLE GRINDER – MODEL NUMBER AG4031G

The model number will be found on a label attached to the motor housing. Always mention the model number in all correspondence regarding your **ANGLE GRINDER** or when ordering repair parts.

### PARTS LIST



KEY NO.	PART NUMBER	DESCRIPTION	QTY
1	941121383	Data Label .....	1
2	941002147	Logo Label.....	1
3	039029012101	Wheel Guard Assembly .....	1
4	039029012005	Square Nut (M5) .....	1
5	039029012004	Screw (M5 x 12 mm) .....	1
6	039029012002	Disc Flange.....	1
7	039029012106	Grinding Wheel Assembly .....	1
8	039029012001	Flange Nut (5/8-11).....	1
9	039029012050	Wrench .....	1
10	039029012051	Auxilliary Handle.....	1

**NOT SHOWN:**

941120088      Warning Label  
 991000123      Operator's Manual  
 2-5-15  
 (Rev:01)

**WARNING:** Improper repair of a double insulated tool can result in damage to the double insulation system possibly causing electrical shock or electrocution. Any repairs requiring disassembly of your tool requires safety testing and should only be performed by a Ryobi Authorized Service Center. For the service center nearest you call 1-800-525-2579.