

PRIMER BULB REPLACEMENT KIT AC20100

WARNING:

To reduce the risk of injury, user must read and understand the operator's manual for their string trimmer or powerhead and this instruction sheet. Always wear eye protection with side shields marked to comply with ANSI Z87.1. Ensure compatibility and fit before using this accessory. Do not use this accessory if a part is damaged or missing. If you are not comfortable performing any of the functions described in these instructions, take your unit to an authorized service center.

WARNING:

Before installing the new primer bulb and/or fuel lines, shut off engine, wait for all moving parts to stop, allow engine to cool, drain any remaining fuel from tank into approved fuel container, press the primer bulb several times to remove any remaining fuel, then disconnect spark plug wire and move it away from spark plug. Failure to follow these instructions can result in serious personal injury or property damage.

WARNING:

Gasoline and its vapors are highly flammable and explosive. To prevent serious personal injury and property damage, handle it with care. Keep away from ignition sources, open flames, and sparks, handle outdoors only, do not smoke and wipe up spills immediately.

PACKING LIST

- Large Primer Bulb
- Small Primer Bulb
- Remote Primer Bulb

NOTE: The instructions you should follow to replace your primer bulb are determined by which primer bulb you are installing. Once you have removed your old primer bulb, choose the most similar bulb from this kit and follow the corresponding instructions to replace.

INSTALLING A NEW LARGE OR SMALL PRIMER BULB

See Figures 1 - 2.

NOTE: Before removing the air box cover or replacing any parts, clean the area to remove dirt or debris that could enter the air box or carburetor.

- Drain all fuel from the fuel tank into a container approved for gasoline.

NOTE: Press the primer bulb several times to purge fuel from the carburetor.

- Remove the air box cover if needed to gain access to the screws.

NOTE: Refer to the Operator's Manual for your product for instructions on airbox cover removal.

- Remove the screws and plate and set aside.
- Carefully pull on the primer bulb to remove ONLY the primer bulb.
- Install the new primer bulb that best matches the one you removed onto the primer base.
- Reinstall the plate and screws. Tighten the screws securely.
- Reinstall the air box cover.
- Check for leaks before running product.
- Press the primer bulb 10 times to be sure primer bulb is working properly. Bulb should fill at least half way with fuel.

INSTALLING A NEW REMOTE PRIMER BULB

See Figure 3.

- Drain all fuel from the fuel tank into a container approved for gasoline.

NOTE: Press the primer bulb several times to purge fuel from the carburetor.

- Remove the air box cover (or cylinder cover) if needed to gain access to the primer bulb.

NOTE: Refer to the Operator's Manual for your product for instructions on air box cover (or cylinder cover) removal.

- Depress the latches on both sides of the old primer bulb and remove it from base.

- Disconnect the primer line and return fuel line from the old primer bulb.

NOTE: The primer line is the fuel line that connects the primer bulb to the carburetor.

- Connect the return line to the large fitting on the new primer bulb and attach the primer line to the small fitting.

- Install the new primer bulb onto the base, ensuring that it latches securely in place, and reassemble.

- Check for leaks before running product.

- Press the primer bulb 10 times to be sure the primer bulb is working properly. Bulb should fill at least half way with fuel.

WARNING:

Check for fuel leaks after completing installation of primer bulb and/or fuel line. Any part that is leaking fuel is a fire hazard and must be replaced or reinstalled immediately. If you find any leaks, correct the problem before using the product. Failure to do so could result in a fire that could cause serious personal injury.

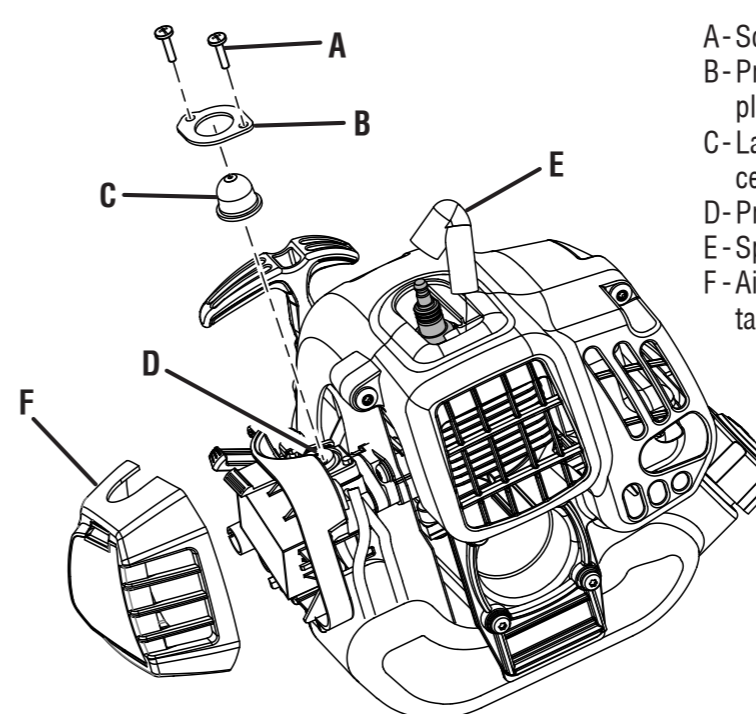
Need help? Call 1-800-860-4050.

TECHTRONIC INDUSTRIES POWER EQUIPMENT

1428 Pearman Dairy Road, Anderson, SC 29625, USA
Phone 1-800-860-4050
www.ryobitools.com

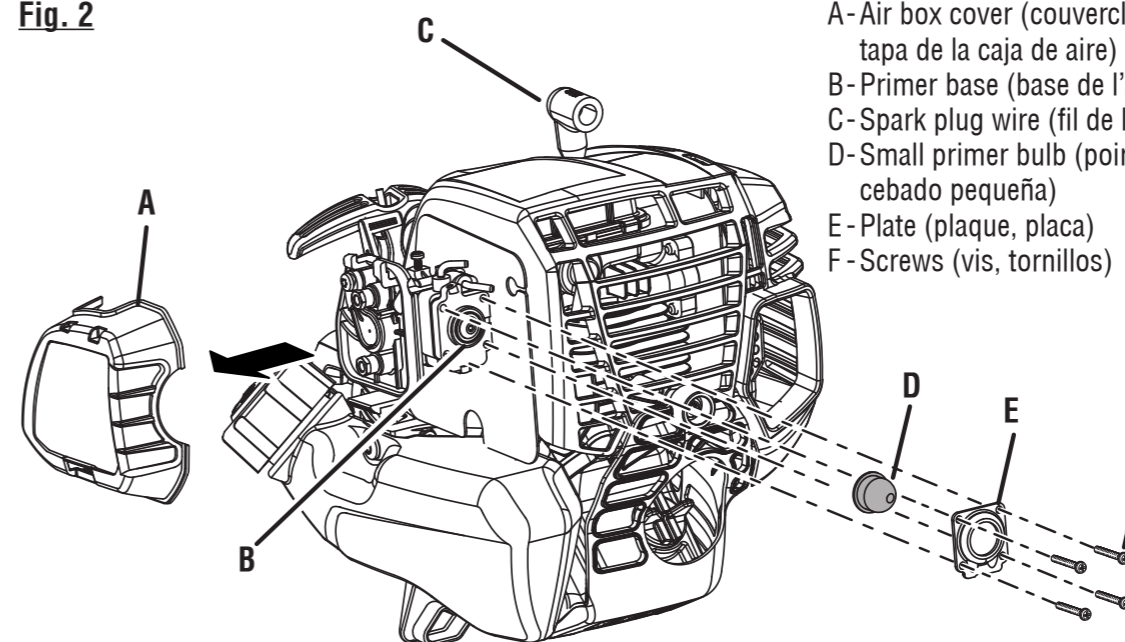
988000-448
2-16-18 (REV:04)

Fig. 1



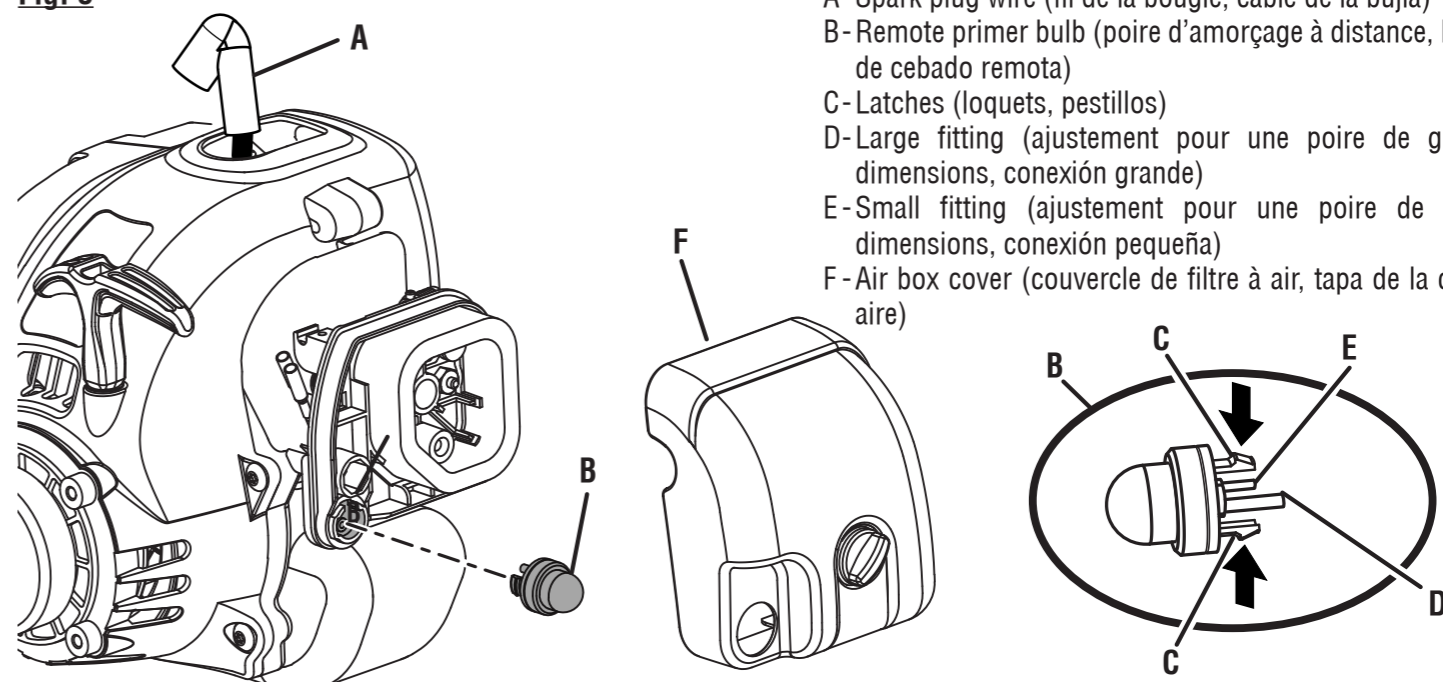
- A - Screw (vis, tornillo)
- B - Primer bulb plate (plaque de poire d'amorçage, placa de bomba de cebado)
- C - Large primer bulb (poire d'amorçage grandes, bomba de cebado grande)
- D - Primer base (base de l'amorceur, base del cebador)
- E - Spark plug wire (fil de la bougie, cable de la bujía)
- F - Air box cover (couvercle de filtre à air, tapa de la caja de aire)

Fig. 2



- A - Air box cover (couvercle de filtre à air, tapa de la caja de aire)
- B - Primer base (base de l'amorceur, base del cebador)
- C - Spark plug wire (fil de la bougie, cable de la bujía)
- D - Small primer bulb (poire d'amorçage petites, bomba de cebado pequeña)
- E - Plate (plaque, placa)
- F - Screws (vis, tornillos)

Fig. 3



- A - Spark plug wire (fil de la bougie, cable de la bujía)
- B - Remote primer bulb (poire d'amorçage à distance, bomba de cebado remota)
- C - Latches (loquets, pestillos)
- D - Large fitting (ajustement pour une poire de grandes dimensions, conexión grande)
- E - Small fitting (ajustement pour une poire de petites dimensions, conexión pequeña)
- F - Air box cover (couvercle de filtre à air, tapa de la caja de aire)