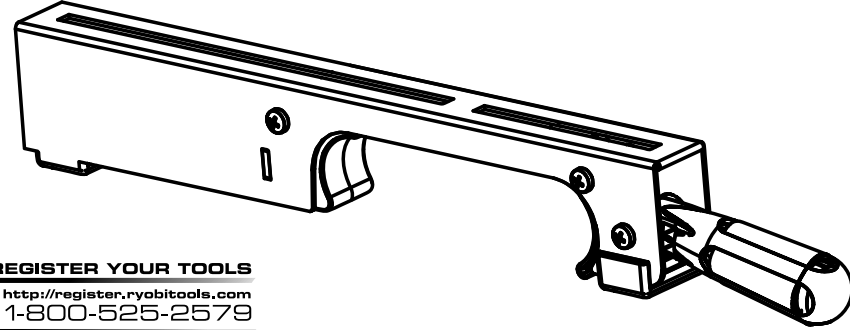


RYOBI

SAW MOUNTING BRACKET A18MSB1

For use with RYOBI A18MS01/A18MS01G/
A18MS01G1 miter saw stand



REGISTER YOUR TOOLS
<http://register.ryobitools.com>
1-800-525-2579

WARNING:

To reduce the risk of injury, do not attempt to use this product until you have read thoroughly and understand completely this operator's manual, the operator's manual for the miter saw, and the operator's manual for the RYOBI A18MS01/A18MS01G/A18MS01G1 miter saw stand. Ensure compatibility and fit before using this accessory. Do not use this accessory if a part is damaged or missing.

READ ALL INSTRUCTIONS

- **KNOW YOUR ACCESSORY.** Read the operator's manual carefully. Learn the product's applications and limitations as well as the specific potential hazards related to this product.
- **KEEP THE WORK AREA CLEAN.** Cluttered work areas and work benches invite accidents. **DO NOT** leave tools or pieces of wood on the saw while operating.
- **DO NOT USE THIS PRODUCT WITH OTHER EQUIPMENT** or for other purposes.
- **BEFORE MAKING A CUT, BE SURE ALL ADJUSTMENTS ARE SECURE.**
- **ALWAYS MOUNT MITER SAW** so the workpiece is positioned in line with the work supports.
- **DO NOT APPLY AN UNBALANCED LOAD** that could cause the RYOBI A18MS01/A18MS01G/A18MS01G1 miter saw stand to tip over.
- **SAVE THESE INSTRUCTIONS.** Refer to them frequently and use them to instruct other users. If you loan someone this product, also loan these instructions.

PACKING LIST

See Figure 1.

Saw Mounting Bracket (2), Bolt (5/16-18 x 2 in.) [4], Hex Nut (5/16 in.) [4], Lock Washer (5/16 in.) [4], Flat Washer (5/16 in.) [4], and Operator's Manual.

ATTACHING SAW TO THE MOUNTING BRACKETS

See Figures 2 - 3.

Position your saw on the RYOBI A18MS01/A18MS01G/A18MS01G1 miter saw stand to achieve maximum balance and stability. All four corners of the saw must be bolted to the saw mounting brackets before use. Make sure bolts do not extend above the table of the miter saw.

NOTE: Ensure that saw mounting brackets can be clamped securely onto RYOBI A18MS01/A18MS01G/A18MS01G1 miter saw stand before mounting saw. If locking lever on saw mounting bracket cannot easily be pushed down into the closed position, the adjustment screw is too tight. Do not force locking lever into the closed position. Loosen the adjustment screw. Refer to the **Mounting Bracket Adjustment** section.

If the saw has mounting holes that line up with the slots in the saw mounting brackets (see figure 2):

NOTE: The holes should align so that the brackets are parallel to each other when mounted.

- Disconnect the saw from power supply and lock the saw arm in the down position.
- Place two 2 x 4 or similar type of stable support underneath the saw to raise the saw and allow access to the saw's mounting feet.
- Place the saw mounting bracket underneath the raised side of the saw, and insert bolt through bracket slots and mounting holes in saw.
- **NOTE:** The saw mounting brackets should be placed so that the locking levers face the front of the saw.
- Loosely secure in place using a flat washer, lock washer, and hex nut.
- Insert second bolt through bracket and saw, then loosely secure.
- Repeat procedure to attach second bracket to saw.
- After making sure both brackets are parallel to each other, lightly tighten all four nuts to hold in position.

If the saw has holes that do not line up with the slots in the saw mounting brackets (see figure 3):

- Disconnect the saw from power supply and lock saw arm in the down position.
- Mount the saw to a mounting surface at least 1/2 in. thick using bolts, washers, and nuts (not included).
- Drill holes in the mounting surface to match the position of the slots in the saw mounting brackets.
- Proceed with installation as previously described.

MOUNTING THE MITER SAW TO THE RYOBI A18MS01/A18MS01G/ A18MS01G1 MITER SAW STAND

See Figures 4 - 5.

WARNING:

Do not mount miter saw to the RYOBI A18MS01/A18MS01G/A18MS01G1 miter saw stand before ensuring the stand legs are secure. Failure to do so may result in possible injury and damage the tool.

- Make sure the mounting bracket locking levers are in the unlocked position.
- Lift the saw and bracket assembly, allowing the assembly to tilt slightly toward your body.
- While still tilted toward you, hook the front edge of the bracket assembly onto the front rail of the stand.

WARNING:

To avoid serious personal injury, make sure the curved front edge of the saw mounting brackets are securely seated onto the front rail of the RYOBI A18MS01/A18MS01G/A18MS01G1 miter saw stand before seating the other end of the brackets. Failure to do so could cause you to lose control of the saw and bracket assembly, which could cause serious personal injury.

- Lower the saw and bracket assembly to allow the rear clamps of the brackets to seat fully over the rear rail.
- Lock the brackets in position by lowering the locking levers.

NOTE: Continue to hold the saw and bracket assembly with one hand until both levers are securely locked.

- Check position and adjust, if necessary, to make sure the weight of the saw is evenly balanced over the rails.
- Ensure the saw is fully seated and locked in position, then securely tighten the four nuts holding the saw to the saw mounting brackets.

WARNING:

The saw mounting brackets are designed to fit snugly over both rails with locking levers in the open position. With the locking levers in the lowered (locked) position, you should not be able to slide the saw mounting bracket assembly along the rails or remove the bracket assembly from the rails. If the saw mounting brackets will not fit over both rails, or if the brackets can be removed from the rails when the levers are locked, remove bracket assembly immediately and adjust bracket adjustment screw. Refer to the **Mounting Bracket Adjustment** section. Failure to heed this warning may result in serious personal injury.

To remove saw from the RYOBI A18MS01/A18MS01G/A18MS01G1 miter saw stand:

- Raise the locking lever to unlock the saw and mounting bracket assembly.
- Grasp the brackets on either side of the assembly and lift away from the rear rail to disengage.
- With the assembly tilted slightly toward you, lift the front part of the assembly to disengage from the front rail of the stand.

MOUNTING BRACKET ADJUSTMENT

See Figure 6.

If the tool and bracket assembly can slide over the rails of the RYOBI A18MS01/A18MS01G/A18MS01G1 miter saw stand or be removed from the rails when the levers are locked, the bracket adjustment screws need to be tightened. If the tool and bracket assembly will not fit over both rails, the bracket adjustment screw needs to be loosened.

NOTE: The tool should be removed from the mounting brackets before attempting to tighten or loosen the bracket adjustment screws.

To adjust:

- Make sure the mounting bracket locking lever is in the unlocked position.
- Lift bracket away from the rails of the RYOBI A18MS01/A18MS01G/A18MS01G1 miter saw stand.
- Use a 10 mm wrench to slightly loosen the nut.
- Turn the screw with a Phillips screwdriver. Rotate clockwise if the bracket assembly needs to be tightened or counterclockwise if the assembly needs to be loosened.
- Install the bracket on the front rail then lower bracket to allow the rear clamp of the bracket to seat fully over the rear rail.
- **NOTE:** The mounting bracket should fit snugly over the rails when in the unlocked position.
- Lock the bracket in position by lowering the locking lever.
- **NOTE:** If the locking lever on the mounting bracket cannot easily be pushed down into the closed position, the adjustment screw is too tight. Do not force locking lever into the closed position. Loosen the adjustment screw.
- When the correct position is achieved, use a Phillips screwdriver to hold the screw in place and wrench-tighten the nut to secure.
- Repeat with the second mounting bracket.

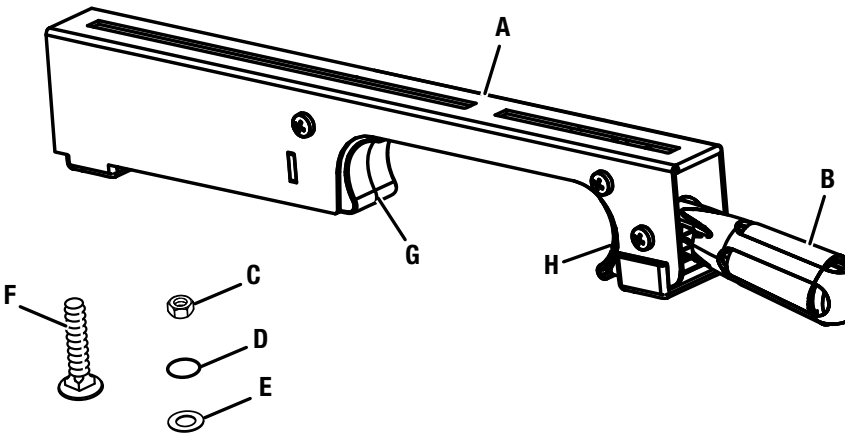
To purchase additional mounting bracket assemblies (089041017702), call RYOBI customer service at 1-800-525-2579.

TTI CONSUMER POWER TOOLS, INC.

P.O. Box 1288, Anderson, SC 29622

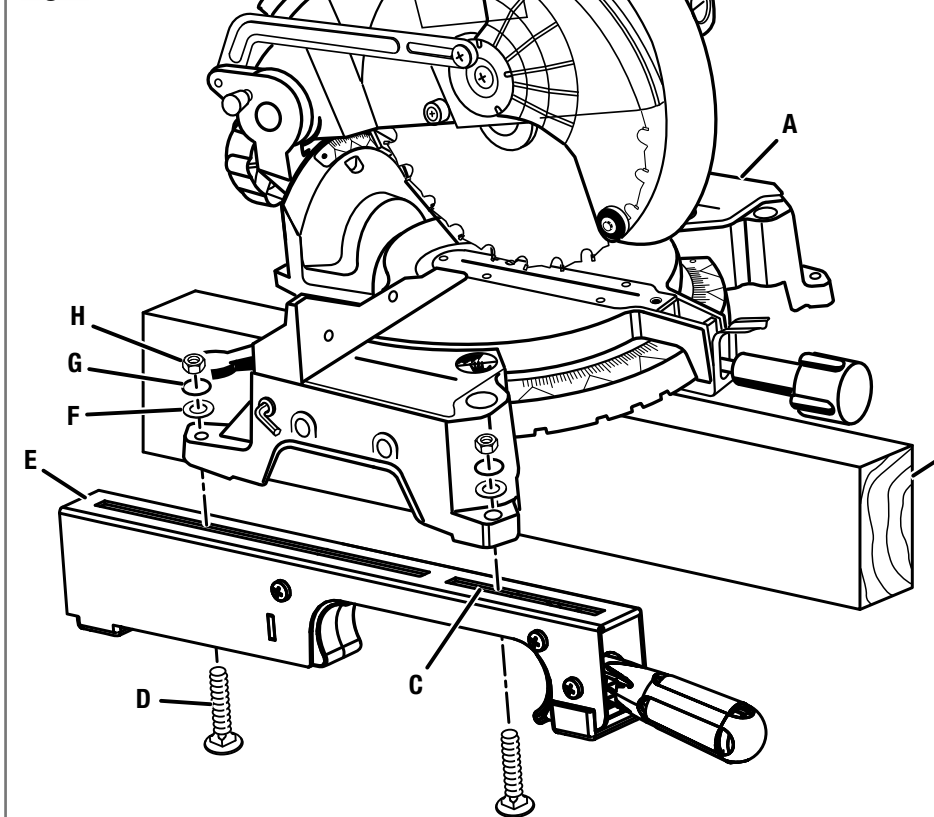
1-800-525-2579 / www.ryobitools.com

Fig. 1



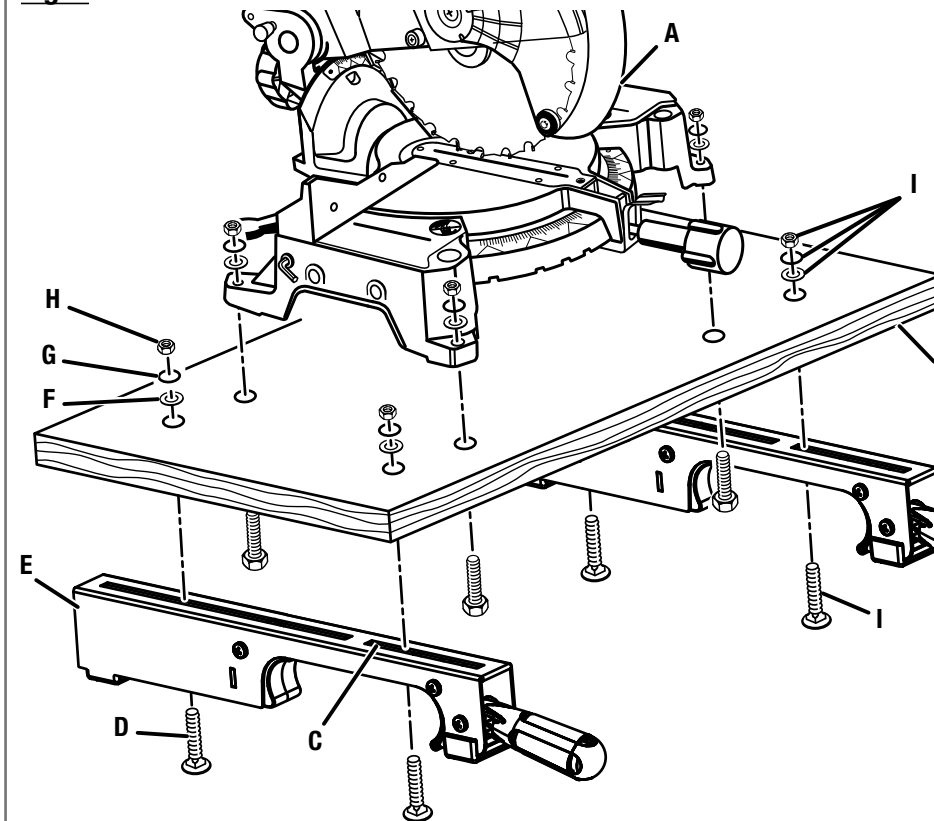
A - Saw mounting bracket (support de montage de la scie, apoyo de montaje de la sierra)
B - Locking lever (levier de verrouillage, palanca de fijación)
C - Hex nut [5/16 in.] (écrou hexagonal [5/16 po], tuerca hexagonal [5/16 pulg.])
D - Lock washer [5/16 in.] (rondelle frein [5/16 po], arandela de fijación [5/16 pulg.])
E - Flat washer [5/16 in.] (rondelle plate [5/16 in.], arandela plana [5/16 in.])
F - Bolt [5/16-18 x 2 in.] (boulon [5/16-18 x 2 po], perno [5/16-18 x 2 pulg.])
G - Rear clamp (bride arrière, mordaza trasera)
H - Front clamp (bride avant, mordaza delantera)

Fig. 2



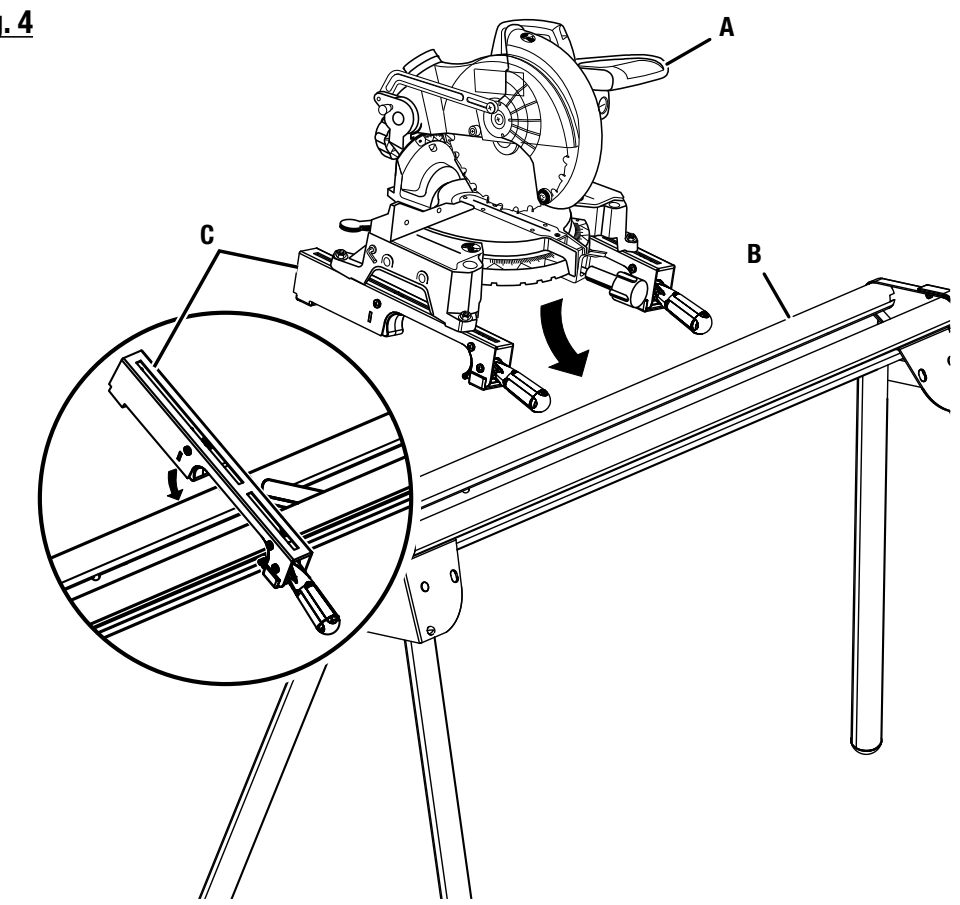
A - Miter saw (scie à onglets, sierra ingleteadora)
B - 2 x 4 (2 x 4, 2 x 4)
C - Slot (fente, ranura)
D - Bolt [5/16-18 x 2 in.] (boulon [5/16-18 x 2 po], perno [5/16-18 x 2 pulg.])
E - Saw mounting bracket (support de montage de la scie, apoyo de montaje de la sierra)
F - Flat washer [5/16 in.] (rondelle plate [5/16 in.], arandela plana [5/16 in.])
G - Lock washer [5/16 in.] (rondelle frein [5/16 po], arandela de fijación [5/16 pulg.])
H - Hex nut [5/16 in.] (écrou hexagonal [5/16 po], tuerca hexagonal [5/16 pulg.])

Fig. 3



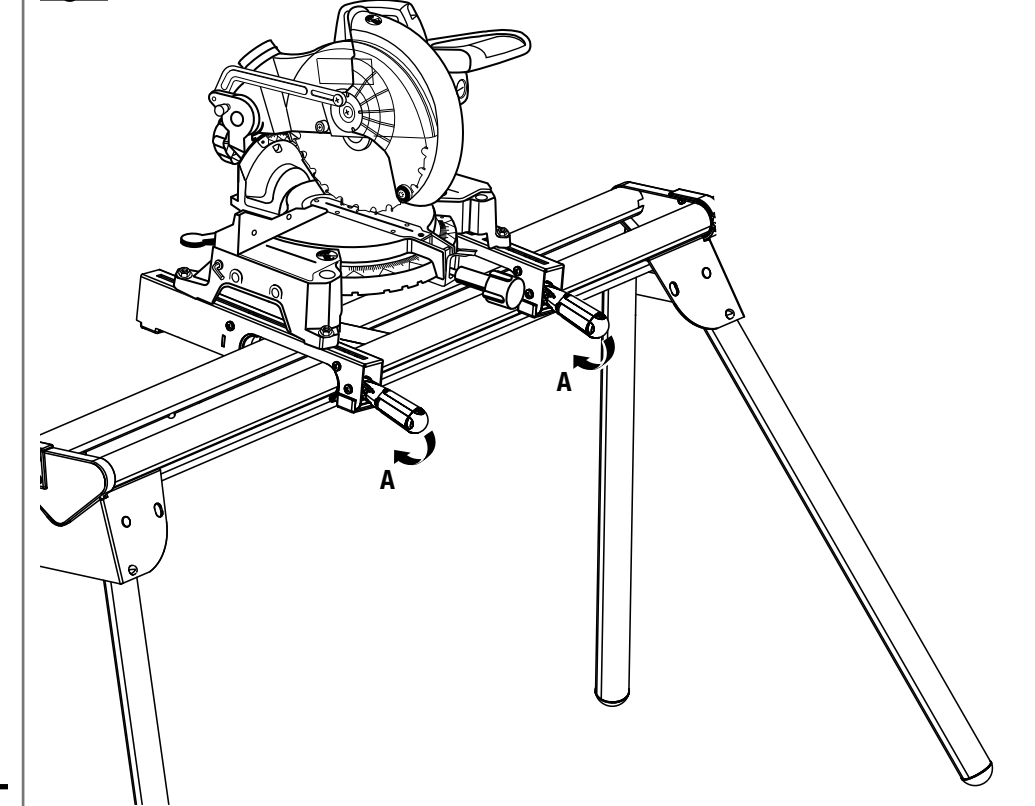
A - Miter saw (scie à onglets, sierra ingleteadora)
B - Stable support (support stable, soporte estable)
C - Slot (fente, ranura)
D - Bolt [5/16-18 x 2 in.] (boulon [5/16-18 x 2 po], perno [5/16-18 x 2 pulg.])
E - Saw mounting bracket (support de montage de la scie, apoyo de montaje de la sierra)
F - Flat washer [5/16 in.] (rondelle plate [5/16 po], arandela plana [5/16 pulg.])
G - Lock washer [5/16 in.] (rondelle frein [5/16 po], arandela de fijación [5/16 pulg.])
H - Hex nut [5/16 in.] (écrou hexagonal [5/16 po], tuerca hexagonal [5/16 pulg.])
I - Hardware not included (quincaillerie pas inclus, estas piezas no vienen incluidas)

Fig. 4



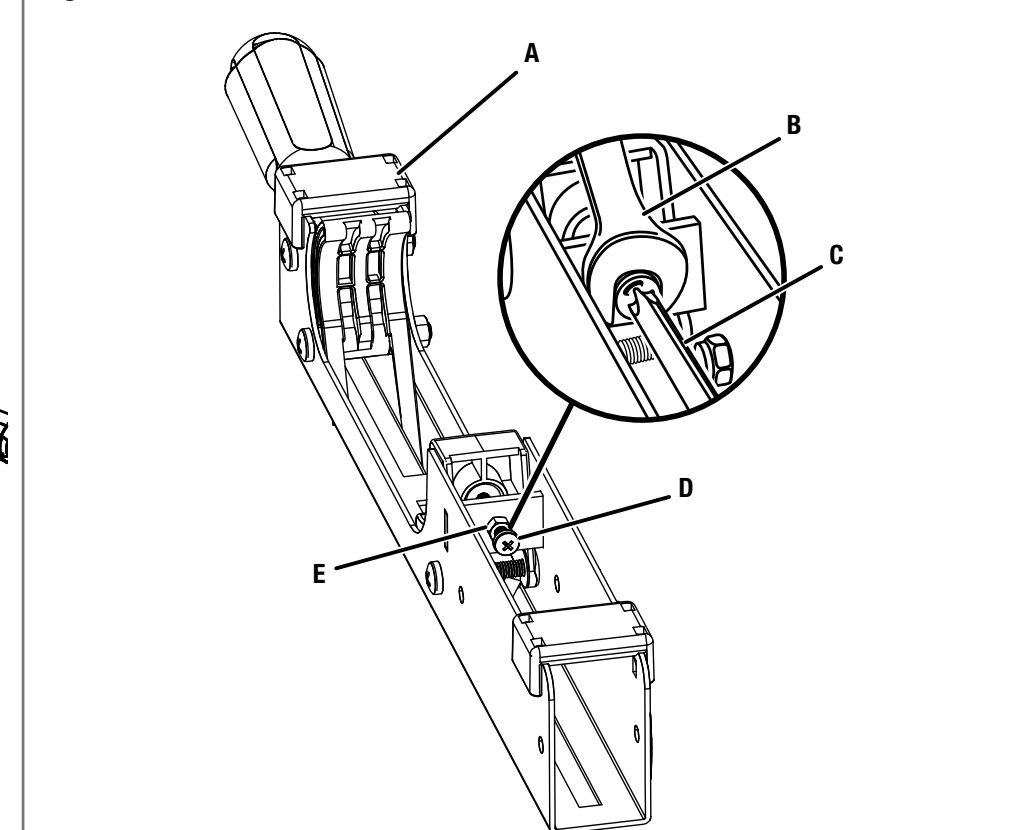
A - Saw arm (bras de scie, brazo de la sierra)
B - A18MS01/A18MS01G/A18MS01G1 miter saw stand (A18MS01/A18MS01G/A18MS01G1 stand pour scie à onglets, A18MS01/A18MS01G/A18MS01G1 pedestal para sierra ingleteadora)
C - Saw mounting bracket (support de montage de la scie, apoyo de montaje de la sierra)

Fig. 5



A - Lower locking levers to secure to stand (abaisser les leviers de verrouillage pour assujettir sur le stand, bajar las palancas de aseguramiento para fijar el conjunto en el banco)

Fig. 6



A - Saw mounting bracket (support de montage de la scie, apoyo de montaje de la sierra)
B - Wrench (10 mm) [clé (10 mm), llave de tuercas (10 mm)]
C - Screwdriver (tournevis, destornillador)
D - Bracket adjustment screw (vis de réglage de support, tornillo de ajuste del apoyo)
E - Nut (écrou, tuerca)

